

A R M Y
N A V Y
A I R F O R C E

T M 1 1 - 5 8 2 0 - 6 6 7 - 3 4 P
E E 1 5 0 - J C - O M I - 0 1 0 / P R C 7 7
T O 3 1 R 2 - 2 P R C 7 7 - 1 4

DIRECT SUPPORT AND GENERAL SUPPORT MAINTENANCE
REPAIR PARTS AND SPECIAL TOOLS LISTS
(INCLUDING DEPOT MAINTENANCE REPAIR PARTS AND SPECIAL TOOLS)

FOR

R A D I O S E T A N / P R C - 7 7
(N S N 5 8 2 0 - 0 0 - 9 3 0 - 3 7 2 4)

Distribution authorized to the department of defense and DOD contractors only for official use or for administration or operational purposes. This determination was made on 4 May 1989. Other requests for this document will be referred to Commander, US Army Communications-Electronics Command and Fort Monmouth, ATTN:AMSEL-LC-ME-P, Fort Monmouth, NJ 07703-5000 .

DESTRUCTION NOTICE- Destroy by any method that will prevent disclosure of contents or reconstruction of the document.

DEPARTMENTS OF THE ARMY, THE NAVY AND THE AIR FORCE

15 AUGUST 1989



Technical Manual
No. 11--5820-667-34P
Technical Manual
EE150-JC-OMI-010/PRC77
Technical Order
TO 31R2-2PRC77-124

DEPARTMENTS OF THE ARMY,
THE NAVY, AND THE AIR FORCE

Washington, DC, 15 August 1989

DIRECT SUPPORT AND
GENERAL SUPPORT MAINTENANCE
REPAIR PARTS AND SPECIAL TOOLS LIST
(INCLUDING DEPOT MAINTENANCE REPAIR PARTS AND SPECIAL TOOLS)
FOR
RADIO SET AN/PRC-77
(NSN 5820-00-930-3724)

Current as of 15 May 1989

REPORTING ERRORS AND RECOMMENDING IMPROVEMENTS

You can help improve this manual. If you find any mistakes or if you know of a way to improve the procedures, please let us know. Mail your letter, DA Form 2028 (Recommended Changes to Publications and Blank Forms) , or DA Form 2028-2 located in back of this manual direct to: Commander, US Army Communications-Electronics Command and Fort Monmouth, ATTN: AMSEL-LC-ME-PS, Fort Monmouth, New Jersey 07703-5000.

For Air Force, submit AFTO Form 22 (Technical Order System Publications Improvement Report and Reply) in accordance with paragraph 6-5, Section VI, TO 00-5-1. Forward direct to prime ALC/MST.

For Navy, mail comments to the Commander, Space and Naval Systems Command, ATTN: SPAWAR 8122, Washington, DC 20363-5100. In either case, a reply will be furnished direct to you.

***This manual supersedes TM 11-5820-667-34P, 1 January 1987.**

		Page	Illus Figure
Section I.	Introduction.	1	
	II. Repair Parts List.	1-1	
Group	00 Radio Set AN/PRC-77.	1-1	1
	01 Antenna AT-271A/PRC	2-1	2
	02 Harness, Electrical Equipment ST- 138/PRC-25 (No parts authorized)		
	03 Bag, Cotton Duck CW-503/PRC-25 (No parts authorized)		
	04 Handset H-189/GR (See TM 11-5965-280-15 for parts)		
	05 Receiver-Transmitter RT-841/PRC-77.	3-1	3
	Receiver-Transmitter RT-841/PRC-77, Case Assembly (A2).	4-1	4
	Receiver-Transmitter Wiring Harness Assy (W2).	5-1	5
	0501 Battery Box CY-2562/PRC-25 (A100).	6-1	6
	0502 Front Panel Assembly (A300) (Includes Loading Network (A28)).	7-1	7
	Front Panel Assembly (A300) (Includes Antenna Loading Network (A28)), Selector Mechanism Assembly (A300A3)	8-1	8
	0503 Chassis Assembly (A200)	9-1	9
Section III.	Special Tools List (Not applicable)		
IV.	Cross-Reference Indexes		
	National Stock Number Index	1-1	
	Part Number Index	1-4	
	Figure and Item Number Index	1-11	

SECTION I INTRODUCTION

1. Scope

This manual lists and authorizes spares and repair parts; special tools; special test, measurement, and diagnostic equipment (TMDE); and other special support equipment required for performance of direct support and general support maintenance of the AN/PRC-77. It authorizes the requisitioning, issue, and disposition of spares, repair parts, and special tools as indicated by the source, maintenance and recoverability (SMR) codes.

2. General

This Repair Parts and Special Tools List is divided into the following sections:

a. Section II. Repair Parts List. A list of spares and repair part authorized by this RPSTL for use in the performance of maintenance. The list also includes parts which must be removed for replacement of the authorized parts. Parts list are composed of functional groups in ascending numeric sequence, with the parts in each group listed in ascending item number sequence. Figure numbers are listed directly beneath the group header. Items listed are shown on the associated illustration.

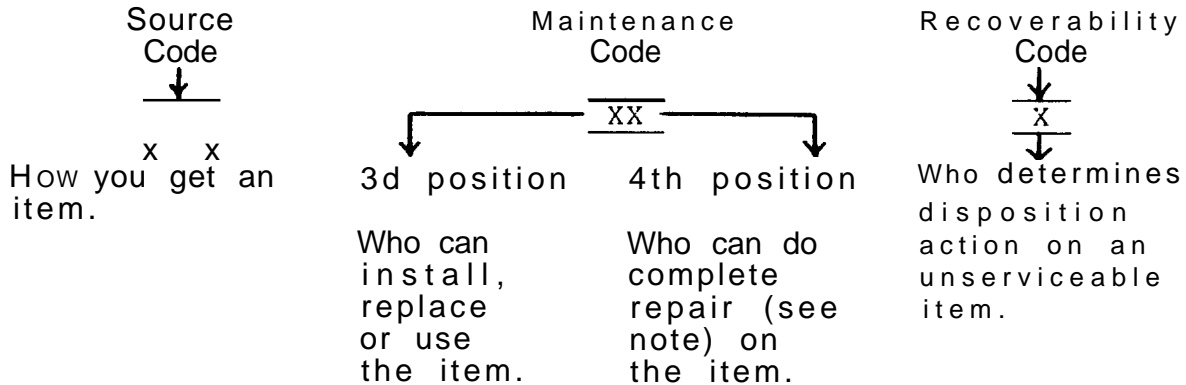
b. Section III. Special Tools List. Not applicable.

c. Section IV. Cross-Reference Indexes. A list, in National item identification number (NIIN) sequence, of all National stock numbered items appearing in the listing, followed by a list in alphameric sequence of all part numbers appearing in the listings. National stock numbers and part numbers are cross-referenced to each illustration figure and item number appearance. The figure number and item number index lists figure and item numbers in numeric sequence and cross-references National stock number, Federal Supply Code for Manufacturer and part numbers.

3. Explanation of Columns (Section II and III)

a. Item No. (Column (1)). Indicates the number used to identify item called out in the illustration.

b. SMR Code (Column (2)). The source, maintenance, and recoverability (SMR) code is a five-position code containing supply/requisitioning information, maintenance category authorization criteria, and disposition instructions, as shown in the following breakout:



NOTE

Complete repair: Maintenance capacity, capability, and authority to perform all corrective maintenance tasks of the "repair" function in a use/user environment in order to restore serviceability to a failed item.

(1) Source code. The source code tells you how to get an item needed for maintenance, repair, or overhaul of an end item/equipment. Explanations of source codes follows:

<u>Code</u>	<u>Explanation</u>
PA	Stocked items: use the applicable NSN to request/requisition items with these source codes. They are authorized to the category indicated by the code entered in the third position of the SMR code.
PB	
Pc	
PD	
PE	
PF	
PG	

NOTE

Items coded PC are subject to deterioration.

KD	Items with these codes are not to be requested/requisitioned individually. They are part of a kit which is authorized to the maintenance category indicated in the third position of the SMR code. The complete kit must be requested and applied.
KF	
KB	

Code

Explanation

Mo - Made at org/AVUM category
MF - Made at DS/AVIM category
MH - Made at GS category
ML - Made at Specialized Repair Activity (SRA)
MD - Made at Depot

Items with these codes are not to be requested/ requisitioned individually. They must be made from bulk material which is identified by the part number in the description and usable on code (UOC) column and listed in the Bulk Material group of the repair parts list. If the item is authorized to you by the third position code of the SMR code, but the source code indicates it is made at a higher category, order the item from the higher category of maintenance.

AO - Assembled by org/AVUM category
AF - Assembled by DS/AVIM category
AH - Assembled by GS category
AL - Assembled by SRA
AD - Assembled by Depot

Items with these codes are not to be requested/requisitioned individually. The parts that make up the assembled item must be requisitioned or fabricated and assembled at the category of maintenance indicated by the source code. If the third position code of the SMR code authorizes you to replace the item, but the source code indicates the item is assembled at a higher category, order the item from the higher category of maintenance.

Code

Explanation

- XA - Do not requisition an "XA" coded item. Order its next higher assembly.
- XB - If an "XB" item is not available from salvage, order it using the FCSM and part number given.
- xc - Installation drawing, diagram, instruction sheet, field service drawing, that is identified by manufacturer's part number.
- XD - Item is not stocked. Order an "XD" coded item through normal supply channels using the FSCM and part number given, if not available.

NOTE

Cannibalization or controlled exchange, when authorized, may be used as a source of supply for items with the above source codes, except for those source coded "XA" or those aircraft support items restricted by requirements of AR 750-1.

(2) Maintenance code. Maintenance codes tell you the category of maintenance authorized to USE and REPAIR support items. The maintenance codes are entered in the third and fourth positions of the SMR code as follows:

(a) The maintenance code entered in the third position tells you the lowest maintenance category authorized to remove, replace, and use an item. The maintenance code entered in the third position will indicate authorization to one of the following categories of maintenance.

<u>Code</u>	<u>Application/Explanation</u>
C	- Crew or operator maintenance done within organizational or aviation maintenance.
o	- organizational or aviation unit category can remove, replace, and use the item.
F	- Direct support or aviation intermediate category can remove, replace, and use the item.
H	- General support category can remove, replace, and use the item.
L	- Specialized repair activity can remove, replace, and use the item.
D	- Depot category can remove, replace, and use the item.

(b) The maintenance code entered in the fourth position tells whether or not the item is to be repaired and identifies the lowest maintenance category with the capability to do complete repair (i.e., perform all authorized repair functions) . This position will contain one of the following maintenance codes.

NOTE

Some limited repair may be done on the item at a lower category of maintenance, if authorized by the Maintenance Allocation Chart (MAC) and SMR codes.

<u>Code</u>	<u>Application/Explanation</u>
o	- Organizational or aviation unit is the lowest category that can do complete repair of the item.
F	- Direct support or aviation intermediate is the lowest category that can do complete repair of the item.
H	- General support is the lowest category that can do complete repair of the item.
L	- Specialized repair activity (designate the specialized repair activity) is the lowest category that can do complete repair of the item.
D	- Depot is the lowest category that can do complete repair of the item.

NOTE

when you use an NSN to requisition an item, the item you receive may have a different part number from the part ordered .

e. Description and Usable on Code (UOC) (Column (5)) . This column includes the following information.

(1) The Federal item name and , When required, a minimum description to identify the item.

(2) The statement "END OF FIGURE" appears just below the last item description in Column (5) for a given figure in both sections II and section III.

f. Qty (Column (6)) . indicates the quantity Of the item used in the breakout shown on the illustration figure, which is prepared for a functional group, subfunctional group, or an assembly. A "V" appearing in this column in lieu of a quantity indicates that the quantity is variable and the quantity ,may vary from application to application.

4. Explanation of Columns (Section IV)

a. National Stock Number (NSN) Index.

(1) Stock number column. This column lists the NSN by National item identification number (NIIN) sequence. The NIIN consists of the last nine digits of the NSN. Ithen using this column to locate an item, ignore the first four digits of tile NSN. When requisitioning items use the complete NSN (13 digits).

(2) Fig . column. This column lists the number of the figure Where the items is identified/located. The illustration are numerical sequence in sections II and III.

(3) Item column. The item number identifies tile item associated with the figure listed in the adjacent Fig. column. This item is also identified by the NSN listed on the same line.

b. Part Number Index. Part numbers in this index are listed by part-number in ascending alphameric sequence.

(1.) FSCM column. This column lists the Federal supply code for manufacturer (FSCM).

(2) Part number column. This column indicates the part number assigned to the item.

(3) Stock number column. This column lists the National stock number for the associated part number and manufacturer identified in the part number and FSCM columns to the left.

(4) Fig. column. This column lists the number of the figure where the item is identified/located in section II and III.

(5) Item column. The item number is that number assigned to the item as it appears in the figure referenced in the adjacent figure number column.

c. figure and Item Number Index .

(1) Fig. column. This Column listst number of the figure where the item is identified / located in sections

(2) Item column. The item number is that number assigned to the item as it appears in the figure referenced in the adjacent figure number column.

(3) Stock number column . This column lists the National stock number for the item.

(4) FSCM colulmn. The Federal supply code for manufacturer (FSCM) is a 5-digit numeric code used to identify the manufacturer, distributor, or Government agency, etc. , that supplies the item.

(5) Part number column. Indicates the primary number used by the manufacturer (individual, firm, corporation , or Government activity) which controls the design and characteristics of the item by means of its engineering drawings, specifications, standards , and inspection requiements to identify an item or range of item.

5. Special Information

a. Associated Publications. The publications listed below pertain to the AN/PRC-77 and its components :

- TM 11-5820-667-12, Radio Set AN/PRC-77 (Including Receiver-Transmitter Radio RT-841\PRC-77
- TM 11-5820-667-20P, Radio Set AN/PRC-77
- TM 11-5820-667-35, Radio Set ANJ/PRC-77
- TM 115965-280-15, Handset H-J.89/GR

b. National Stock Numbers. National stock numbers (NSN's) that are missing from P source coded items have been applied for and will be added to this TM by future change/revision when they are entered in the Army Master Data File (AMDF). until the NSN'S are established and published , submit exception requisitions to: Commander, US Army Communications-Electronics " Command and Fort Monmouth, ATTN: AMSEL-LC-MM, Fort Monmouth, NJ 07703-5000 for the part required to support your equipment.

6. How to Locate Repair Parts

a. When National stock number or part number is not known.

(1) First. Using the table of contents, determine the assembly group or subassembly group to which the item belongs. This is necessary since figures are prepared for assembly groups and subassembly groups, and listings are divided into the same groups.

(2) Second. Find the figure covering the assembly group or subassembly group to which the item belongs.

(3) Third. Identify the item on the figure and note the item number.

(4) Fourth. Refer to the Repair Parts List for the figure to find the part number for the item number noted on the figure.

(5) Fifth. Refer to the Part Number Index to find the NSN, if assigned.

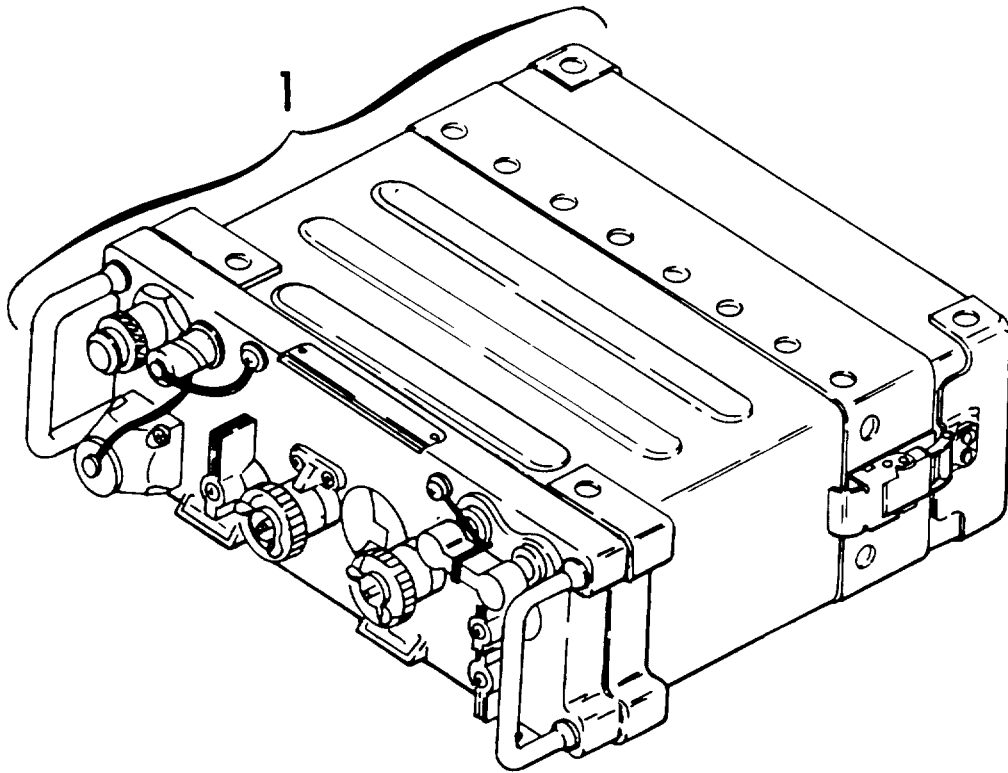
b. When National stock number or part number is known.

(1) First. Using the index of National stock numbers and part numbers, find the Pertinent National stock number or part number. The NSN index is in National item identification number (NIIN) sequence (para 4a(1)). The part numbers in the part number index are listed in ascending alphameric sequence (para 4b). Both indexes cross-reference you to the illustration figure and item number of the item you are looking for.

(2) Second. After finding the figure and item number, verify that the item is the one you're looking for, then locate the item number in the repair parts list for the figure.

7. Abbreviations

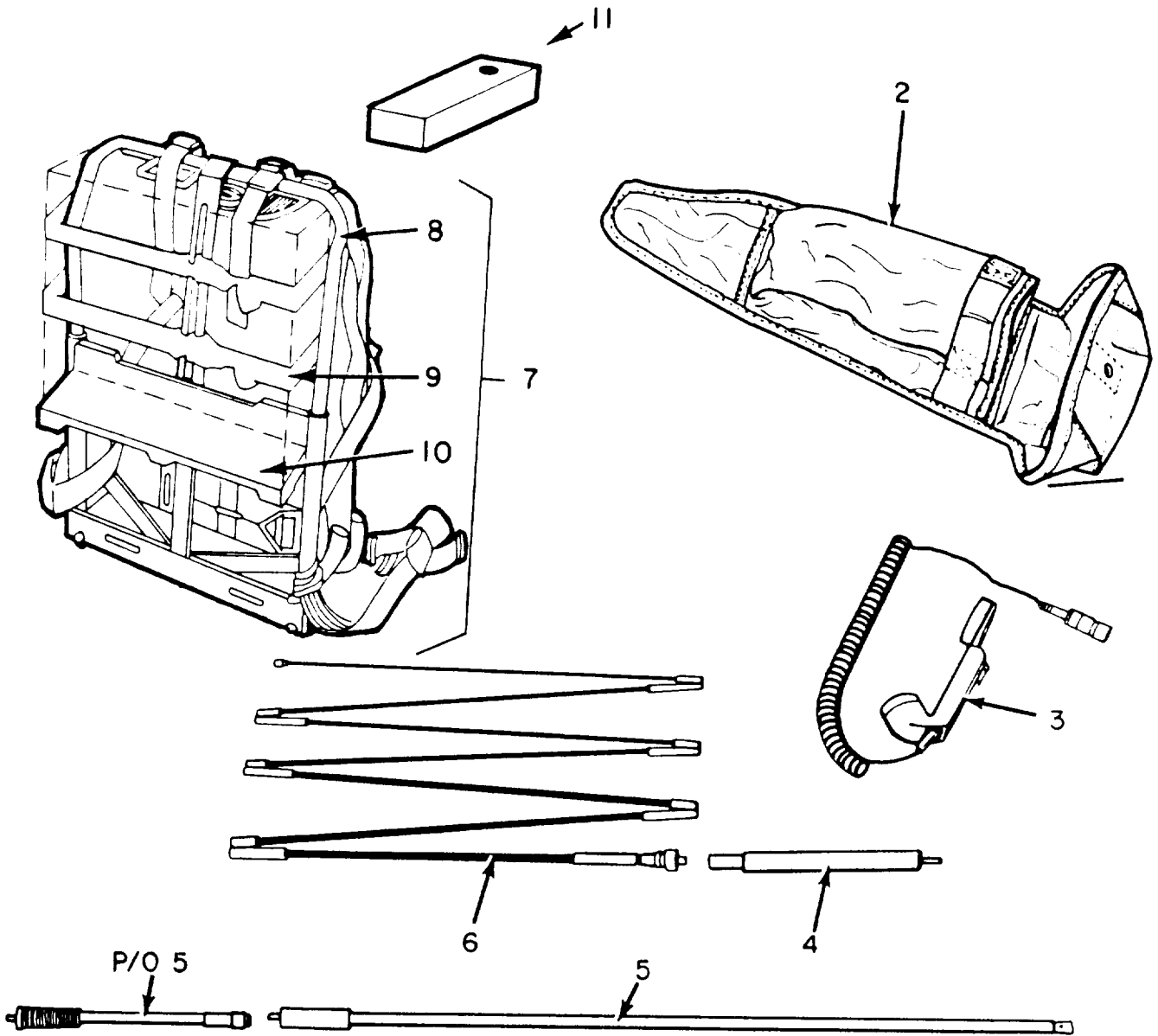
Not applicable.



RECEIVER-TRANSMITTER

ELOMIOO I

Figure 1. Radio Set AN/PRC-77 (Sheet 1 of 2).



ELOMI002

Figure 1. Radio Set AN/PRC-77 (Sheet 2 of 2).

(1) ITEM NO	(2) SMR CODE	(3) FSCM	(4) PART NUMBER	(5) DESCRIPTION AND USABLE ON CODES (UOC)	(6) QTY
GROUP 00 RADIO SET AN/PRC-77					
FIGURE 1					
1	PAODD	80058	RT-841/PRC-77	RECEIVER-TRANSMITTE (FOR PARTS BREAKDOWN SEE FIGURE 3)	1
2	PAOZZ	80063	SM-C-447163	BAG, ACCESSORY	1
3	PAOZZ	80058	H-250/U	HANDSET	1
4	PAOZZ	80058	AB-591/PRC-25	SUPPORT, ANTENNA	1
5	PAOZZ	80058	AT-892/PRC-25	ANTENNA	1
6	PAOZZ	80058	AT-271A/PRC	ANTENNA (FOR PARTS BREAKDOWN SEE FIGURE 2)	1
7	AOOZZ	80058	ST-138/PRC-25	HARNES, ELECTRICAL	1
8	PAOZZ	81349	MIL-F-43834	FRAME, FIELD PACK LC-2	1
9	PAOZZ	81349	MIL-S-43828	STRAP, WEBBING	2
10	PAOZZ	81349	MIL-F-43834	SHELF, CARGO SUPPORT LC-1	1
11	PCOZZ	80058	BA4386PRC25	BATTERY, DRY	1
11	PCOZA	80058	BA-5598/U	BATTERY, NONRECHARG (FOR ARTIC OPERATION ONLY)	1

END OF FIGURE

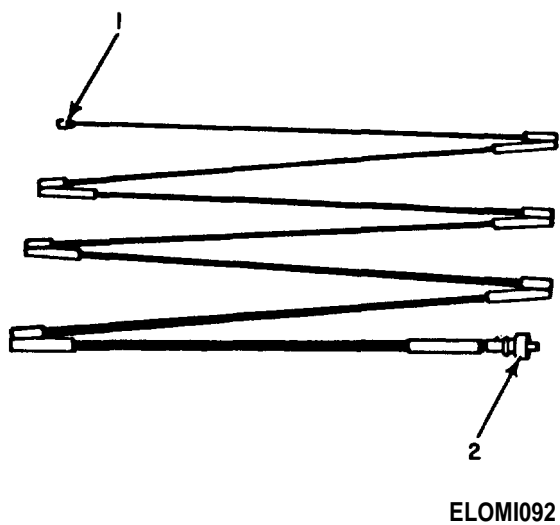


Figure 2. Antenna AT-271A/PRC.

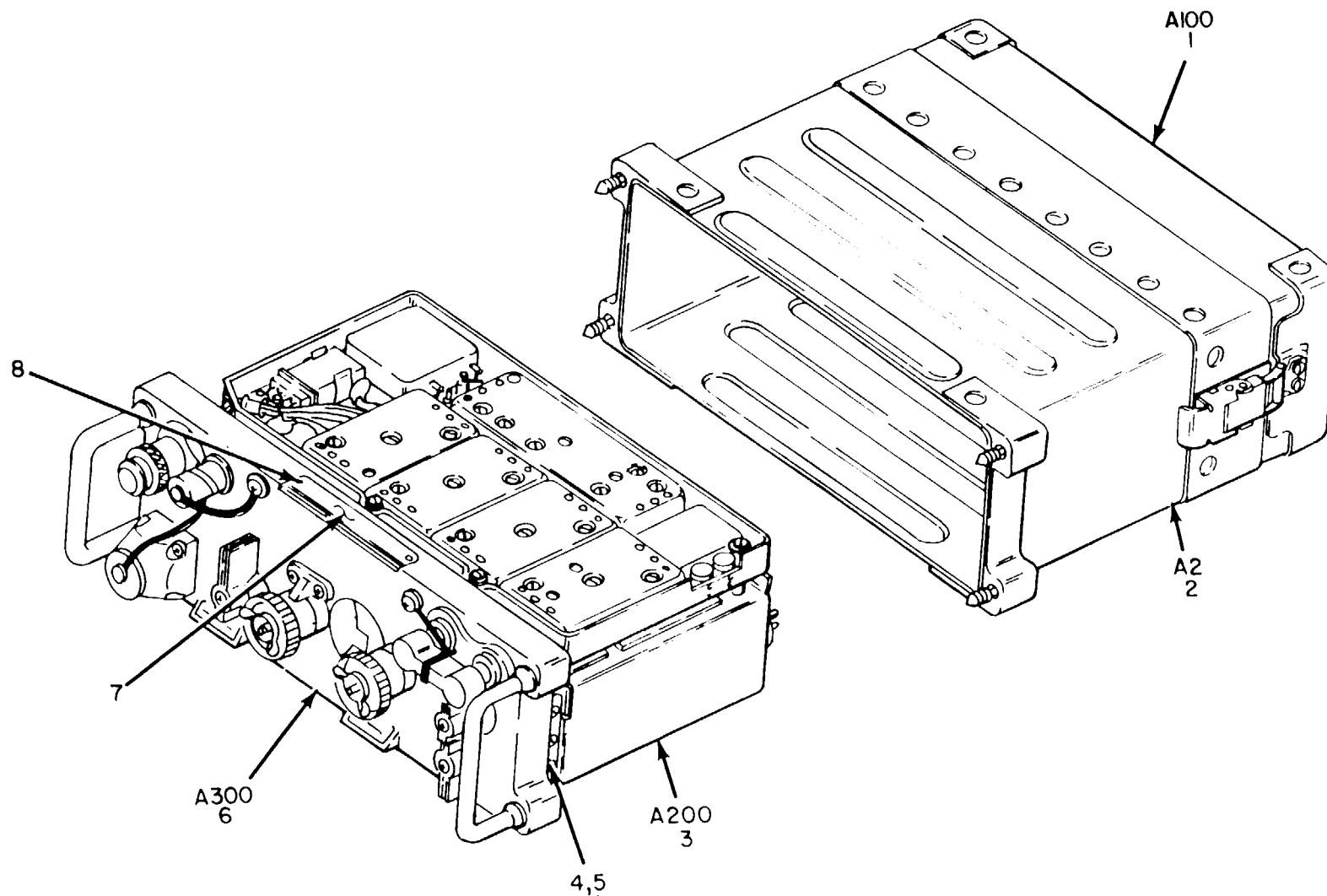
(1)	(2)	(3)	(4)	(5)	(6)
ITEM	SMR		PART		
NO	CODE	FSCM	NUMBER	DESCRIPTION AND USABLE ON CODES (UOC)	QTY

GROUP 01 ANTENNA AT-271A/PRC

FIGURE 2

1	PAOZZ	80063	SCB91329	CAP, ELECTRICAL	1
2	PAOZZ	80063	SM-B-182386	ADAPTER, ANTENNA TO	1

END OF FIGURE

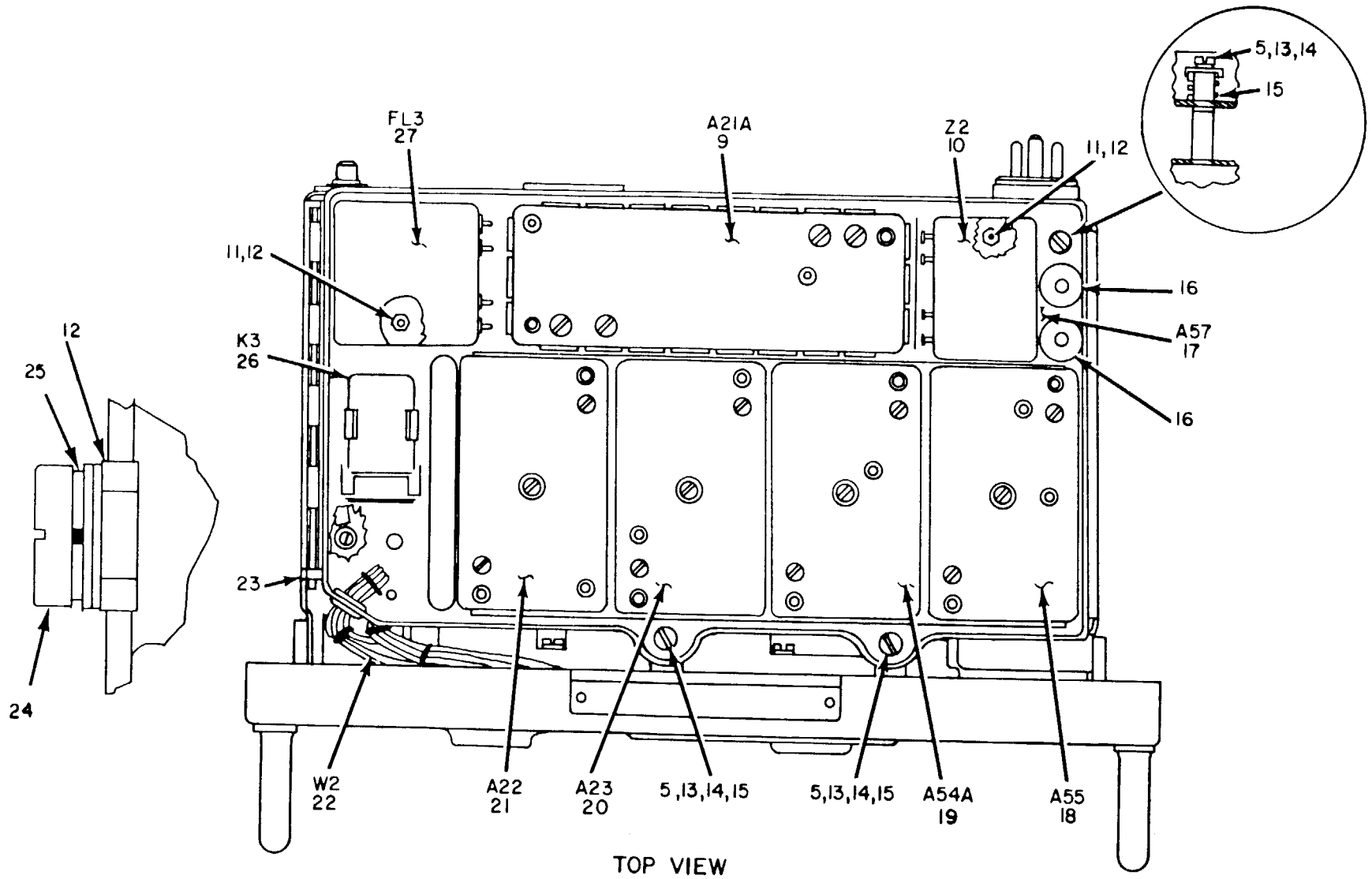


MAJOR COMPONENTS

ELOMI004

TM 11-5820-667-34P

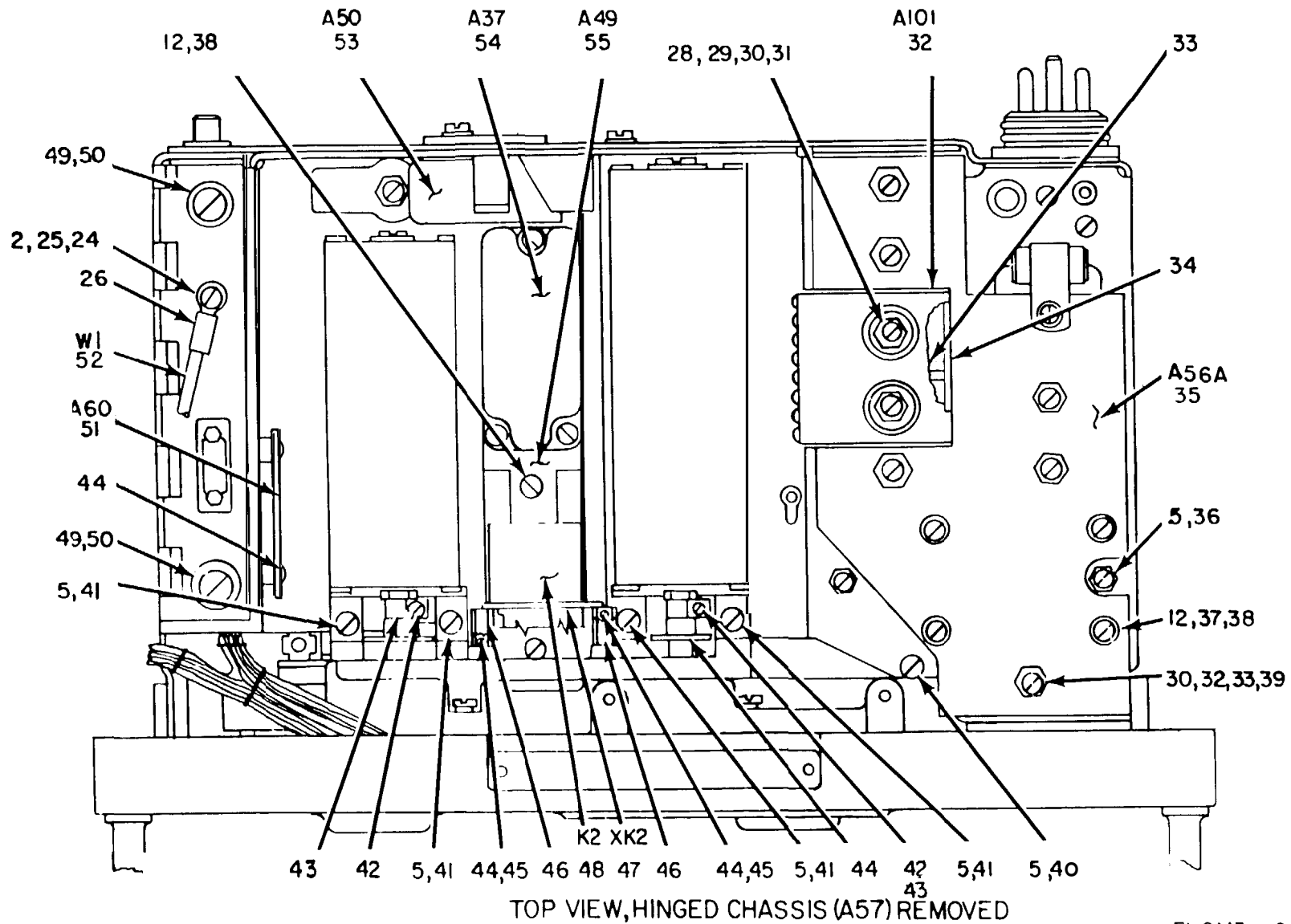
Figure 3. Receiver-Transmitter RT-841/PRC-77 (Sheet 1 of 4).



TM 11-5820-667-34P

Figure 3. Receiver-Transmitter RT-841/PRC-77 (Sheet 2 of 4).

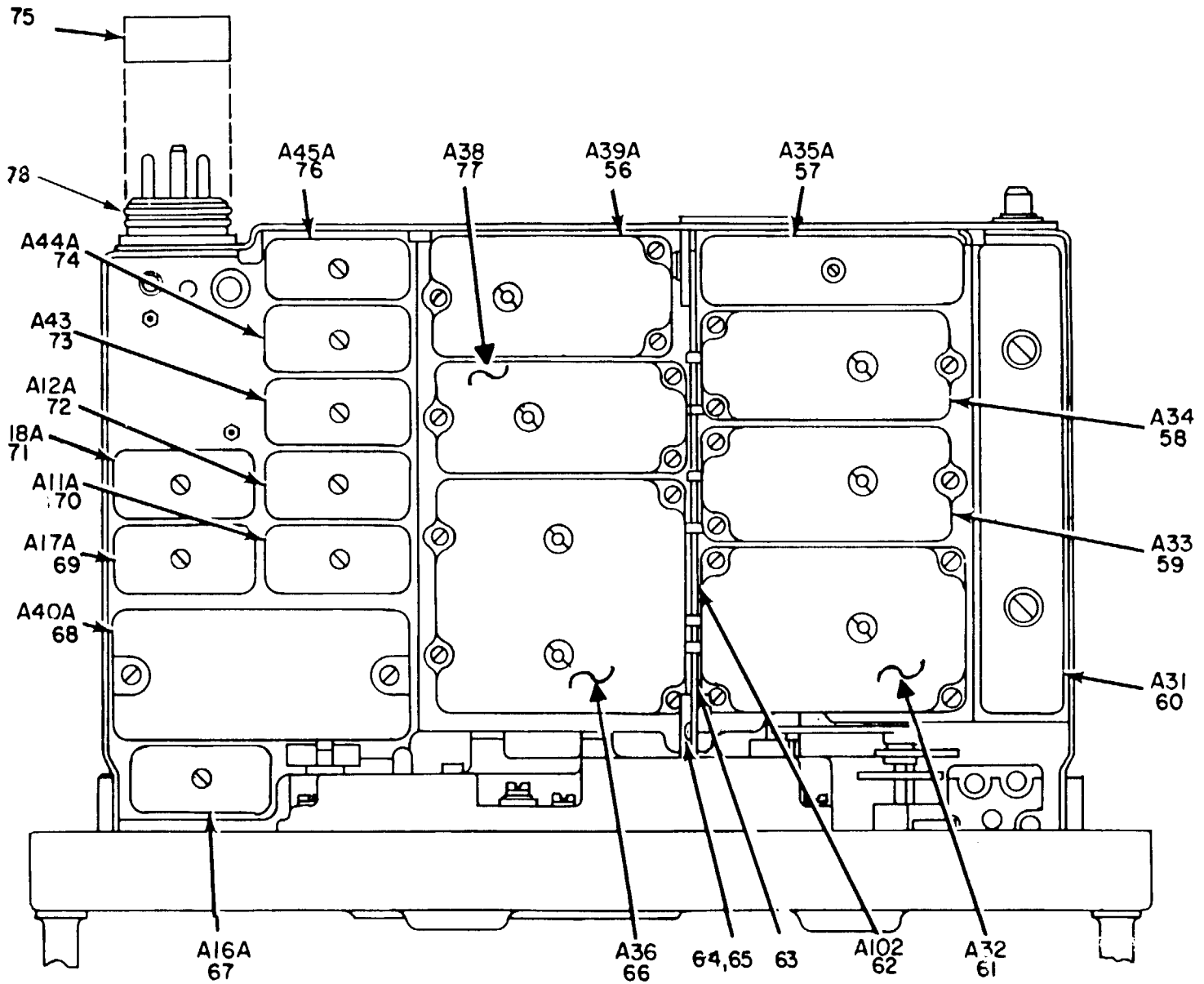
ELOMIO05



TM 11-5820-667-34P

ELOMI∞6

Figure 3. Receiver-Transmitter RT-841/PRC-77 (Sheet 3 of 4).



BOTTOM VIEW

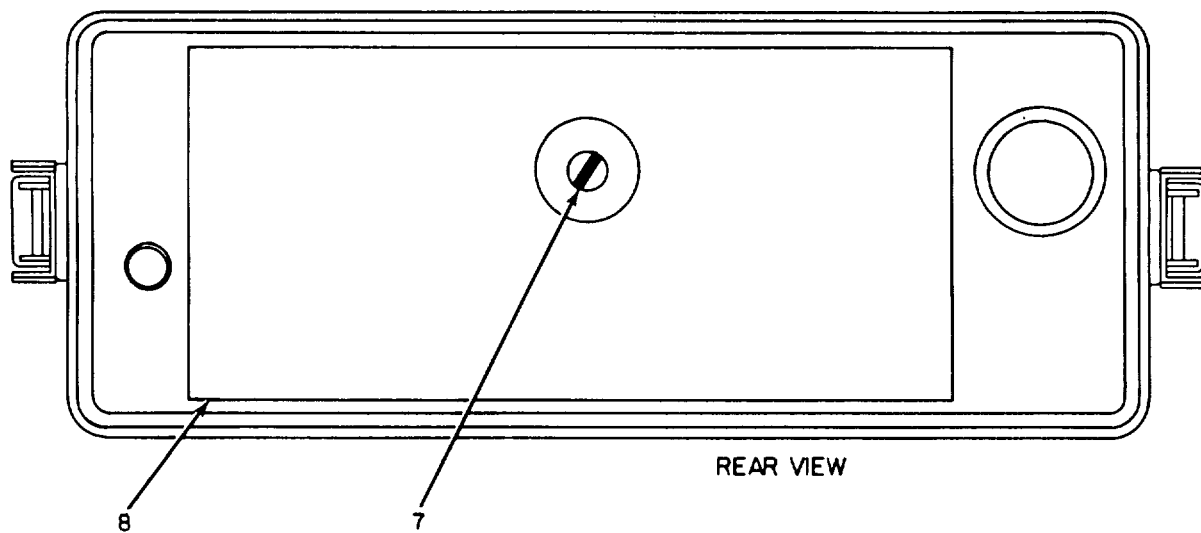
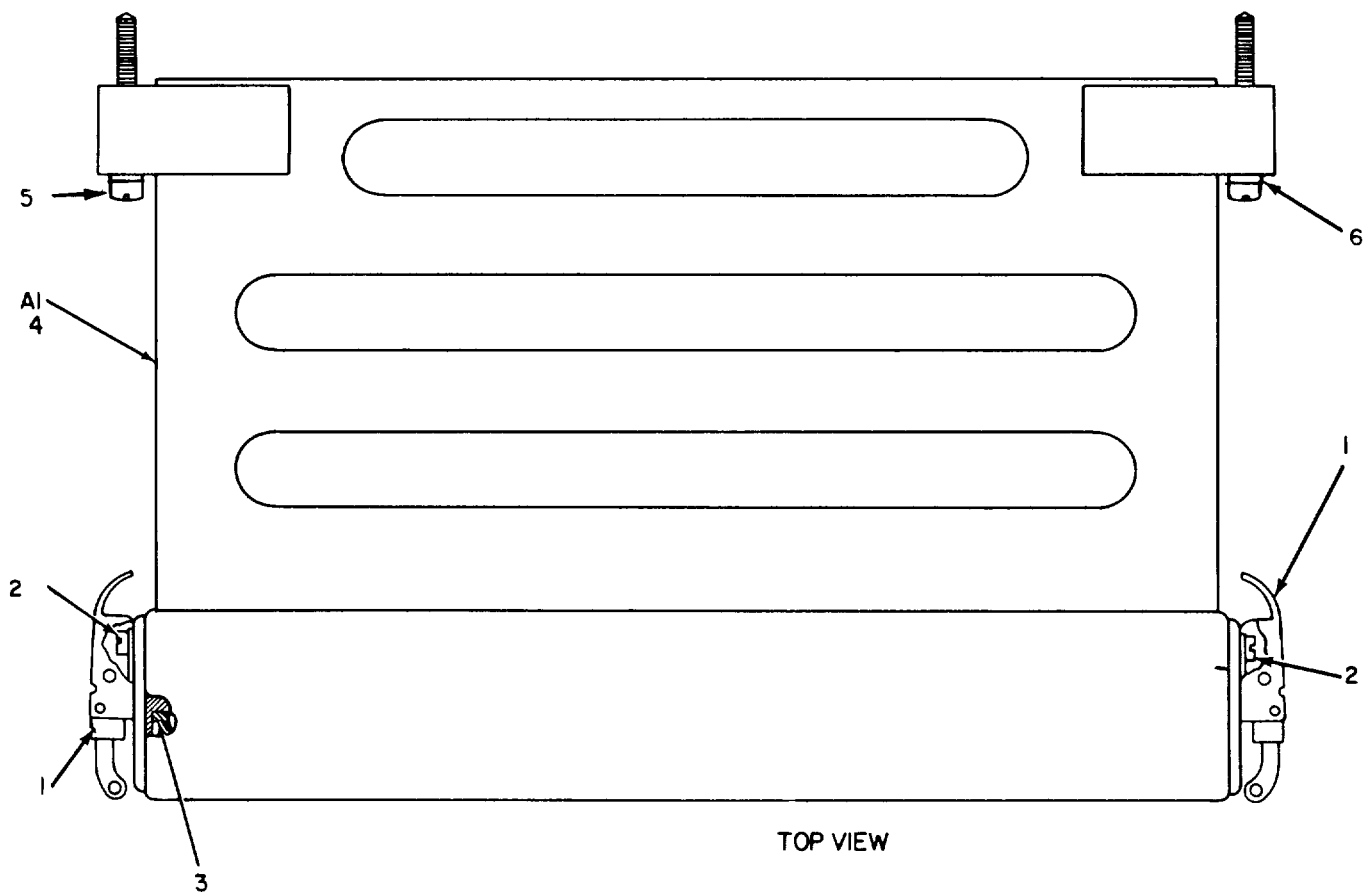
ELOMI007

Figure 3. Receiver-Transmitter RT-841/PRC-77 (Sheet 4 of 4).

(1) ITEM NO	(2) SMR CODE	(3) FSCM	(4) PART NUMBER	(5) DESCRIPTION AND USABLE ON CODES (UOC)	(6) QTY
GROUP 5 RECEIVER-TRANSMITTER RT-841/PRC-77					
FIGURE 3					
1	PAOFF	80063	SMD447322	BATTERY BOX (FOR PARTS BREAKDOWN SEE FIGURE 6)	1
2	PAOHH	80063	SM-D-447351	CASE, RECEIVER-TRANS (FOR PARTS BREAKDOWN SEE FIGURE 4)	1
3	XBHDD	80063	SM-D-448877	CHASSIS ASSEMBLY, MA (FOR PARTS BREAKDOWN SEE FIGURE 11)	1
4	PAHZZ	96906	MS35206-226	SCREW, MACHINE	6
5	PAHZZ	96906	MS35338-41	WASHER, LOCK	17
6	ADHDD	80063	SMD448913	PANEL ASSEMBLY (FOR PARTS BREAKDOWN SEE FIGURE 7)	1
7	XBFFZZ	80063	SM-C-448890	PLATE, IDENTIFICATION	1
8	PAFZZ	96906	MS21318-1	SCREW, DRIVE	2
9	PAFZZ	80063	SM-D-875724	AMPLIFIER, INTERMEDI	1
10	PAFZZ	80063	SM-C-448888	DISCRIMINATOR CRYST	1
11	PAFZZ	96906	MS35649-242	NUT, PLAIN, HEXAGON	4
12	PAFZZ	96906	MS35335-85	WASHER, LOCK	13
13	PAFZZ	80063	SM-B-447066-3	SCREW, EXTERNALLY RE	3
14	PAFZZ	80063	SM-B-447930	WASHER, RECESSED	3
15	PAFZZ	96906	MS24585C238	SPRING, HELICAL, COMP	3
16	PAFZZ	80063	SM-B-447784	EXTRACTOR	2
17	XBDZZ	80063	SM-D-448884	CHASSIS, ELECTRICAL	1
18	PAFZZ	80063	SM-D-448752	AMPLIFIER, AUDIO FRE	1
19	PAFZZ	80063	SM-D-875637	TONE SQUELCH ASSEMB	1
20	PAFZZ	80063	SM-D-447316	GENERATOR, REFERENCE	1
21	PAFZZ	80063	SM-D-447314	AMPLIFIER, AUDIO FRE	1
22	XBFFZZ	80063	SM-D-448955	WIRING HARNESS	1
23	PAFZZ	80063	SM-C-447121-3	PIN, STRAIGHT, HEADLE	1
24	PAFZZ	96906	MS35206-212	SCREW, MACHINE	1
25	PAFZZ	96906	MS35338-40	WASHER, LOCK	2
26	PAFZZ	80063	SM-C-447085	RELAY, ELECTROMAGNET	1
27	PAFZZ	80063	SM-D-447251	FILTER, BAND PASS	1
28	PAHZZ	80063	SM-B-447958	SCREW, ASSEMBLED WAS	8
29	PAHZZ	80063	SM-B-447960	NUT, PLAIN, HEXAGON	8
30	PAHZZ	80063	SM-B-620778	WASHER, LOCK	8
31	PAHZZ	96906	MS35335-32	WASHER, LOCK	2
32	PAHZZ	80063	SM-C-621269	SHIELD ASSEMBLY, RAD	1
33	XBHZZ	80063	SM-C-621270	BRACKET, SHIELD	1
34	PAHZZ	80063	SM-C-621271	INSULATOR, PLATE	1
35	PAHZZ	80063	SM-D-621274	CIRCUIT CARD ASSEMB	1
36	PAHZZ	80063	SM-B-447019	SCREW, EXTERNALLY RE	2
37	PAHZZ	96906	MS35206-214	SCREW, MACHINE	7
38	PAHZZ	96906	MS27183-3	WASHER, FLAT	4
39	PAHZZ	80063	SM-B-447043-1	SHIM	6
40	PAHZZ	96906	MS35206-227	SCREW, MACHINE	2
41	PAHZZ	96906	MS35206-228	SCREW, MACHINE	4
42	PAHZZ	80063	SM-B-620769	SCREW, SELF-LOCKING	2

(1)	(2)	(3)	(4)	(5)	(6)
ITEM	SMR		PART		
NO	CODE	FSCM	NUMBER	DESCRIPTION AND USABLE ON CODES (UOC)	QTY
43	XBHZZ	80063	SM-B-620765	CLAMP, LOOP	2
44	PAHZZ	96906	MS35206-202	SCREW, MACHINE	4
45	PAHZZ	96907	MS35337-39	WASHER, LOCK	2
46	PAHZZ	80063	SM-B-449086	STUD, EXTENSION	2
47	XBHZZ	80063	SM-C-875638	SOCKET, RELAY	1
48	PAFZZ	80063	SM-C-447566	RELAY, ELECTROMAGNET	1
49	PAHZZ	80063	SM-B-447066-4	SCREW, EXTERNALLY RE	2
50	PAHZZ	96906	MS35337-42	WASHER, LOCK	2
51	PAFZZ	80063	SM-D-448971	MODULATOR, ATTENUATO	1
52	XBFZZ	80063	SM-B-447771	LEAD, ELECTRICAL	1
53	PAFZZ	80063	SM-D-448753	TRANSMITTER MIXER	1
54	PAFZZ	80063	SM-D-448745	AMPLIFIER, RADIO FRE	1
55	PAFZZ	80063	SM-D-448798	TRANSMITTER SUBASSE	1
56	PAFZZ	80063	SM-D-875672	OSCILLATOR, RADIO FR	1
57	PAFZZ	80063	SM-D-875692	MIXER STAGE, FREQUEN	1
58	PAFZZ	80063	SM-D-448743	AMPLIFIER, RADIO FRE	1
59	PAFZZ	80063	SM-D-448742	AMPLIFIER, RADIO FRE	1
60	PAFZZ	80063	SM-D-448740	CONTROL, ELECTRICAL	1
61	PAFZZ	80063	SM-D-448741	RECEIVER INPUT ASSE	1
62	PAFZZ	80063	SM-C-448906	BAR ASSEMBLY, TEST S	1
63	XBFZZ	80063	SM-C-448906-1	BAR, TEST SET, RADIO	1
64	PAFZZ	80063	SM-B-447786	SCREW, CAP, SOCKET HE	2
65	XBFZZ	80063	SM-B-447785	SHIM	1
66	PAFZZ	80063	SM-D-448744	AMPLIFIER, RADIO FRE	1
67	PAFZZ	80063	SM-D-875708	REGULATOR, VOLTAGE	1
68	PAFZZ	80063	SM-D-875659	OSCILLATOR ASSEMBLY	1
69	PAFZZ	80063	SM-D-875704	COMPARATOR, SIGNAL	1
70	PAFZZ	80063	SM-D-875705	CONTROL, ELECTRICAL	1
71	PAFZZ	80063	SM-D-875722	AMPLIFIER INTERMEDI	1
72	PAFZZ	80063	SM-D-875720	MIXER STAGE, FREQUEN	1
73	PAFZZ	80063	SM-D-448739	FILTER, BAND PASS	1
74	PAFZZ	80063	SM-D-621272	MIXER STAGE, FREQUEN	1
75	PAOZZ	80063	SM-B-180054	GASKET	1
76	PAFZZ	80063	SM-D-875701	OSCILLATOR, RADIO FR	1
77	PAFZZ	80063	SM-D-448746	OSCILLATOR, RADIO FR	1
78	PAOZZ	96906	MS9021-020	PACKING, PREFORMED	2

END OF FIGURE



NOTE: FOR COMPLETE REFERENCE DESIGNATION
PREFIX WITH A2.

ELOMI008

Figure 4. Receiver-Transmitter RT-841/PRC-77 Case Assembly (A2).

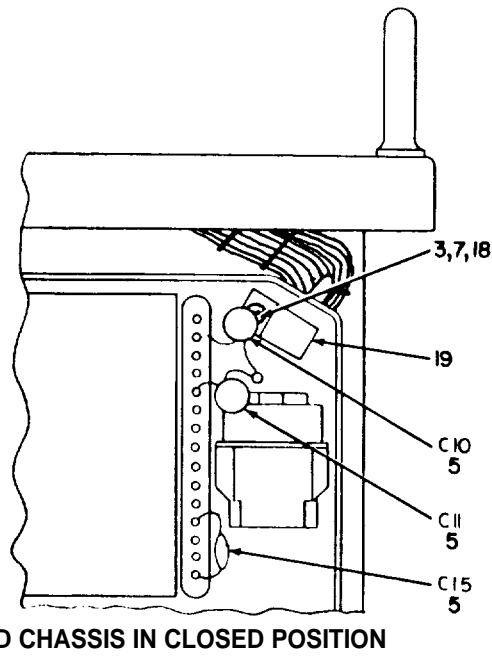
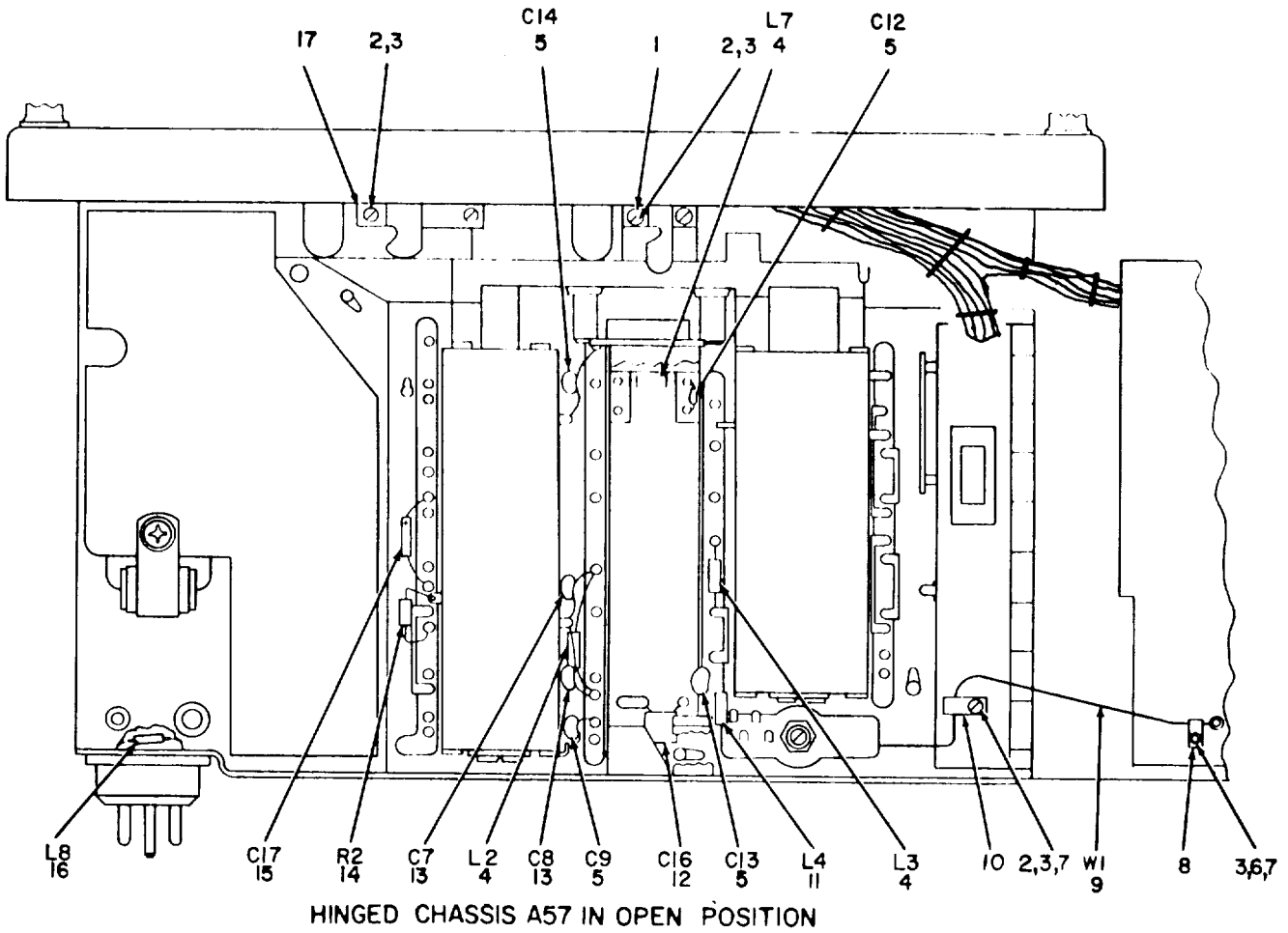
(1)	(2)	(3)	(4)	(5)	(6)
ITEM	SMR		PART		
NO	CODE	FSCM	NUMBER	DESCRIPTION AND USABLE ON CODES (UOC)	QTY

GROUP 05 RECEIVER-TRANSMITTER
 RT-841/PRC-77, CASE
 ASSEMBLY (A2)

FIGURE 4

1	PAOZZ	80063	SM-C-447321-1	CATCH, CLAMPING	2
2	PAOZZ	96906	MS35206-226	SCREW, MACHINE	4
3	PAFZZ	80063	SM-C-620768	GASKET	1
4	XBFZZ	80063	SM-D-447399	COVER, RECEIVER-TRAN	1
5	PAOZZ	80063	SM-B-447224	SCREW, EXTERNALLY RE	4
6	PAOZZ	80063	SM-B-447694-2	WASHER, LOCK	4
7	PAFZZ	96906	MS35207-260	SCREW, MACHINE	1
8	PAFZZ	80063	SM-B-447945	PAD, CUSHIONING	1

END OF FIGURE



NOTE FOR COMPLETE REFERENCE DESIGNATIONS,
PREFIX WITH W2

Figure 5. Receiver-Transmitter, Wiring Harness Assembly (W2).

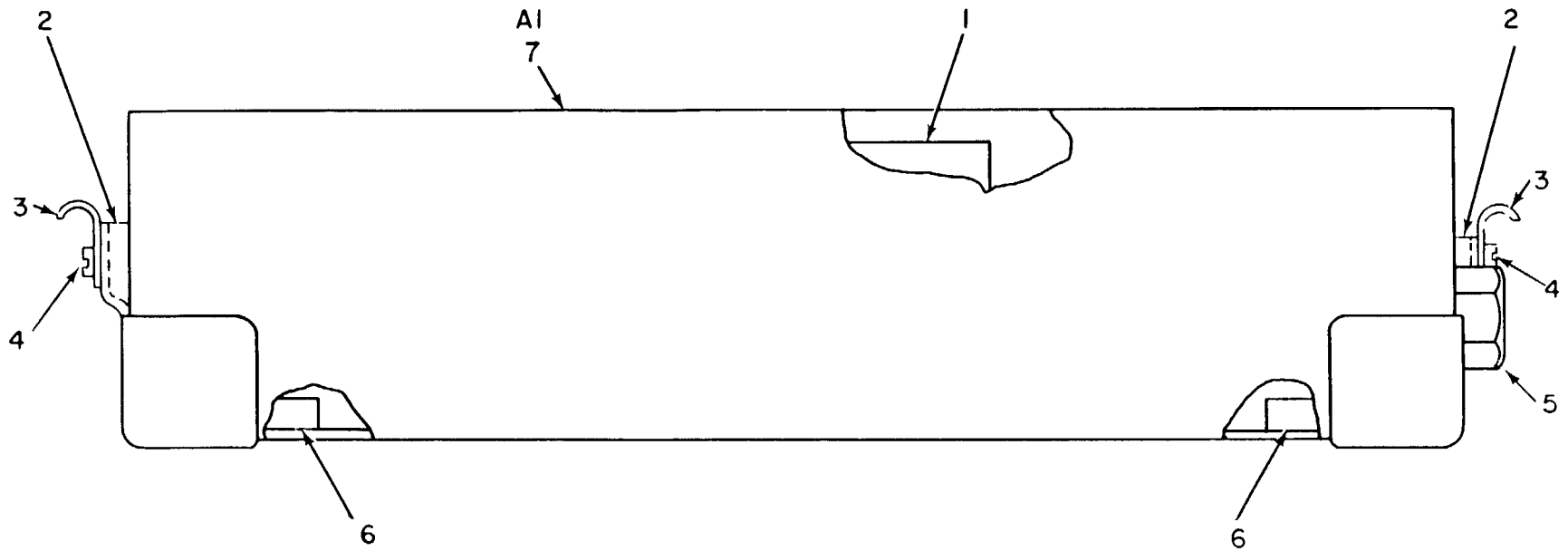
(1)	(2)	(3)	(4)	(5)	(6)
ITEM	SMR		PART		
NO	CODE	FSCM	NUMBER	DESCRIPTION AND USABLE ON CODES (UOC)	QTY

GROUP 05 RECEIVER-TRANSMITTER,
WIRING HARNESS ASSY (W2)

FIGURE 5

1	XBHZZ	80063	SM-B-447762	CLAMP	1
2	PAHZZ	96906	MS35206-213	SCREW, MACHINE	5
3	PAHZZ	96906	MS35338-40	WASHER, LOCK	7
4	PAHZZ	96906	MS14046-4	COIL, RADIO FREQUENC	3
5	PAHZZ	80063	SM-B-447470	CAPACITOR, FIXED, CER	7
6	PAHZZ	96906	MS35649-242	NUT, PLAIN, HEXAGON	1
7	PAHZZ	96906	MS27183-3	WASHER, FLAT	3
8	PAHZZ	80063	SM-B-447768	CLAMP, LOOP	1
9	XAHHH	80063	SM-D-621280	WIRING HARNESS, BRAN	1
10	PAHZZ	80205	NAS1397P3	CLAMP, LOOP	1
11	PAHZZ	96906	MS90538-04	COIL, RADIO FREQUENC	1
12	PAHZZ	81349	M39014/02-1345	CAPACITOR, FIXED, CER	1
13	PAHZZ	80063	SM-B-447473	CAPACITOR, FIXED, CER	2
14	PAHZZ	81349	RCR07G101JS	RESISTOR, FIXED, COMP	1
15	PAHZZ	81349	M39003/01-2991	CAPACITOR, FIXED, ELE	1
16	PAHZZ	80063	SM-D-449039	CHOKE, RADIO FREQUEN	1
17	XBHZZ	80063	SM-B-447763	CLAMP	1
18	PAHZZ	96906	MS35206-214	SCREW, MACHINE	1
19	PAHZZ	80205	NAS1397P4N	CLAMP, LOOP	1

END OF FIGURE



NOTE: COMPLETE REFERENCE
DESIGNATION PREFIX WITH AI00.

E L O M I O 10

Figure 6. Battery Box CY- 2562/PRC-25 (AI00).

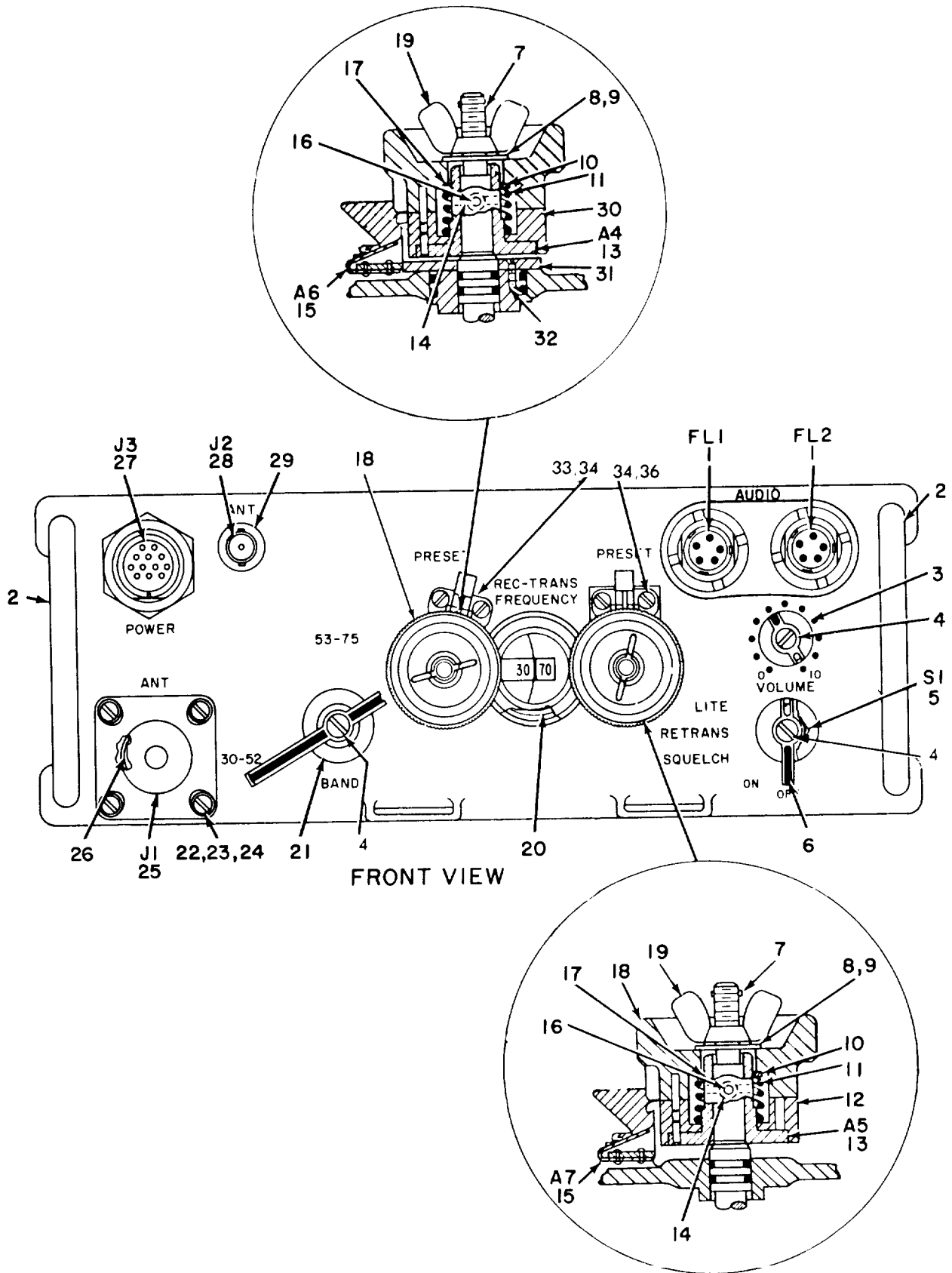
(1) ITEM NO	(2) SMR CODE	(3) FSCM	(4) PART NUMBER	(5) DESCRIPTION AND USABLE ON CODES (UOC)	(6) QTY
-------------------	--------------------	-------------	-----------------------	--	------------

GROUP 0501 BATTERY BOX CY-2562/
PRC-25

FIGURE 6

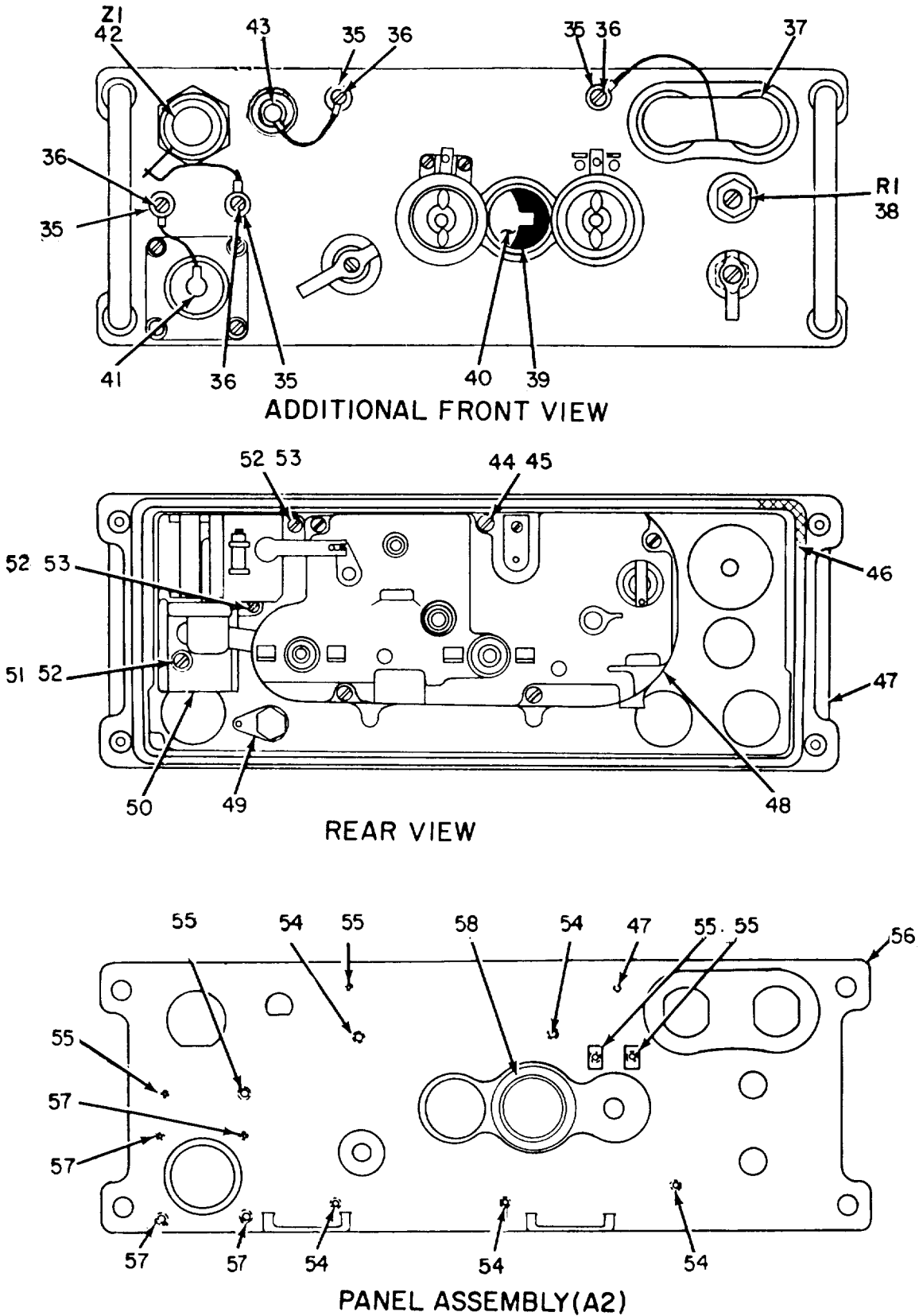
1	PAFZZ	80063	SM-B-447461	PLATE, IDENTIFICATIO	1
2	PAOZZ	80063	SM-B-447265	NUT, PLATE	2
3	PAOZZ	80063	SM-C-447321-2	STRIKE, CATCH	2
4	PAOZZ	96906	MS35206-226	SCREW, MACHINE	4
5	PAOZZ	80063	SM-D-447322-1	VALVE, SAFETY RELIEF	1
6	PAOZZ	80063	SM-B-447320	PAD, CUSHIONING	4
7	XAFZZ	80063	SM-D-447264	CASE ASSEMBLY	1

END OF FIGURE



NOTE; FOR COMPLETE REFERENCE
DESIGNATION PREFIX WITH A300.

Figure 7. Front Panel Assembly (A300) (Including Loading Network)
(Sheet 1 of 2).



NOTE: FOR COMPLETE REFERENCE DESIGNATION
PREFIX WITH A300.

ELOMI090

Figure 7. Front Panel Assembly (A300) (Including Loading Network)
(Sheet 2 of 2).

(1)	(2)	(3)	(4)	(5)	(6)
ITEM	SMR		PART		
NO	CODE	FSCM	NUMBER	DESCRIPTION AND USABLE ON CODES (UOC)	QTY

GROUP 0502 FRONT PANEL ASSEMBLY
(A300) (INCLUDES LOADING
NETWORK (28))

FIGURE 7

1	PAFZZ	80063	SM-D-447367	FILTER, RADIO FREQUE	2
2	MDDZZ	80063	SM-B-447221	HANDLE, BOW	2
3	PAOZZ	96906	MS91524-1	KNOB	1
4	PAOZZ	96906	MS51957-27	SCREW, MACHINE	3
5	PAHZZ	80063	SM-C-447094	SWITCH, ROTARY	1
6	PAOZZ	80063	SM-C-447052	KNOB	1
7	PAOZZ	80063	SM-B-447302-2	PIN, SPRING	2
8	PAOZZ	80063	SM-B-447694-1	WASHER, LOCK	2
9	PAOZZ	80063	SM-B-447107-5	SPACER, SPECIAL	2
10	PAOZZ	96906	MS16624-1037	RING, RETAINING	2
11	PAOZZ	80063	SM-B-447304	SPRING, HELICAL, COMP	2
12	PAOZZ	80063	SM-C-447976-1	KNOB	1
13	PAOZZ	80063	SM-C-447287	SLEEVE ASSEMBLY, TRA	2
14	PAOZZ	80063	SM-B-447302-3	PIN, SPRING	2
15	PAOZZ	80063	SM-C-447307	DIAL-KNOB LOCK, ELEC	2
16	PAOZZ	96906	MS51981-8	SETSCREW	2
17	PAOZZ	80063	SM-B-447303	WASHER, FLAT	2
18	PAOZZ	80063	SM-C-447306	KNOB	2
19	PAOZZ	80063	SM-B-447308	NUT, PLAIN, WING	2
20	PAHZZ	80063	SM-B-447223	GASKET	1
21	PAOZZ	80063	SM-C-447226	KNOB	1
22	PAFZZ	80063	SM-B-447445-6	SCREW, MACHINE	4
23	PAFZZ	80063	SM-B-447694-4	WASHER, LOCK	4
24	PAFZZ	80063	SM-B-447694-6	WASHER, FLAT	4
25	PAFZZ	80063	SM-C-447102	CONNECTOR, RECEPACL	1
26	PAFZZ	96906	MS28775-020	PACKING, PREFORMED	1
27	PAHZZ	80063	SM-C-447928	CONNECTOR, RECEPACL	1
28	PAHZZ	80058	UG-1873/U	CONNECTOR, RECEPACL	1
29	PAHZZ	96906	MS35333-110	WASHER, LOCK	1
30	PAHZZ	80063	SM-C-447976-2	KNOB	1
31	PAHZZ	80063	SM-B-447299	PLATE, MOUNTING, TRAN	1
32	PAHZZ	96906	MS51959-2	SCREW, MACHINE	4
33	PAOZZ	80063	SM-B-447445-3	SCREW, MACHINE	2
34	PAOZZ	80063	SM-B-447694-3	WASHER, LOCK	4
35	PAOZZ	80063	SM-B-447392	BUSHING, SLEEVE	4
36	PAOZZ	80063	SM-B-447445-4	SCREW, MACHINE	6
37	PAOZZ	80063	SM-B-447440	CAP, PROTECTIVE, DUST	1
38	PAHZZ	80063	SM-B-447148	RESISTOR, VARIABLE, N	1
39	PADZZ	80063	SM-B-447222	BEZEL, INSTRUMENT MO	1
40	PADZZ	80063	SM-B-447225	WINDOW, DIAL	1
41	PAOZZ	80063	SM-B-447439	COVER, ELECTRICAL CO	1
42	PAOZZ	80058	U-317/U	CONNECTOR, PLUG, ELEC	1
43	PAOZZ	80063	SM-C-447403	COVER, ELECTRICAL CO	1
44	PAHZZ	80063	SM-B-447968	SCREW, MACHINE	5
45	PAHZZ	96906	MS35338-41	WASHER, LOCK	5

(1)	(2)	(3)	(4)	(5)	(6)
ITEM	SMR		PART		
NO	CODE	FSCM	NUMBER	DESCRIPTION AND USABLE ON CODES (UOC)	QTY
46	PAZZ	80063	SM-B-447355	GASKET	1
47	PADZZ	80063	SMD449063	PANEL ASSEMBLY	1
48	PAHZA	80063	SM-D-449067	SELECTOR,MECHANISM	1
49	PAHZZ	80063	SM-B-620779	TERMINAL,LUG	1
50	PAHZZ	80063	SM-D-447313	NETWORK,IMPEDENCE,M	1
51	PAHZZ	96906	MS35206-214	SCREW,MACHINE	1
52	PAHZZ	96906	MS35338-135	WASHER,LOCK	3
53	PAHZZ	96906	MS35206-216	SCREW,MACHINE	2
54	PADZZ	96906	MS21208-C0620	INSERT,SCREW THREAD	5
55	PADZZ	96906	MS21208-C0410	INSERT,SCREW THREAD	6
56	PADZZ	80063	SM-D-449063-1	PANEL	1
57	PADZZ	96906	MS21208-C0610	INSERT,SCREW THREAD	4
58	XBDZZ	80063	SM-B-447732	INSERT,SCREW THREAD	1

END OF FIGURE

NOTE:
 FOR COMPLETE REFERENCE DESIGNATION
 PREFIX WITH A300A3.

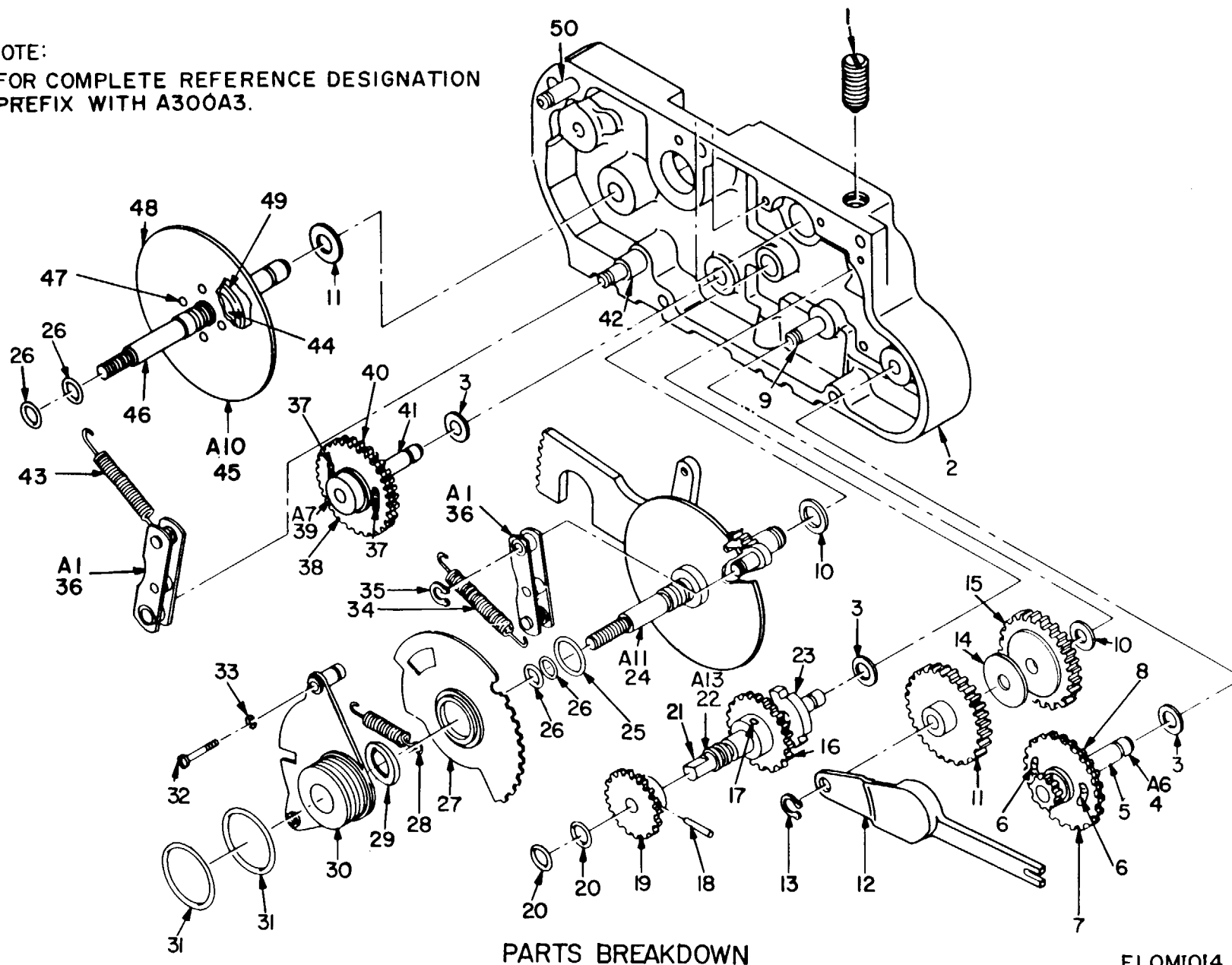
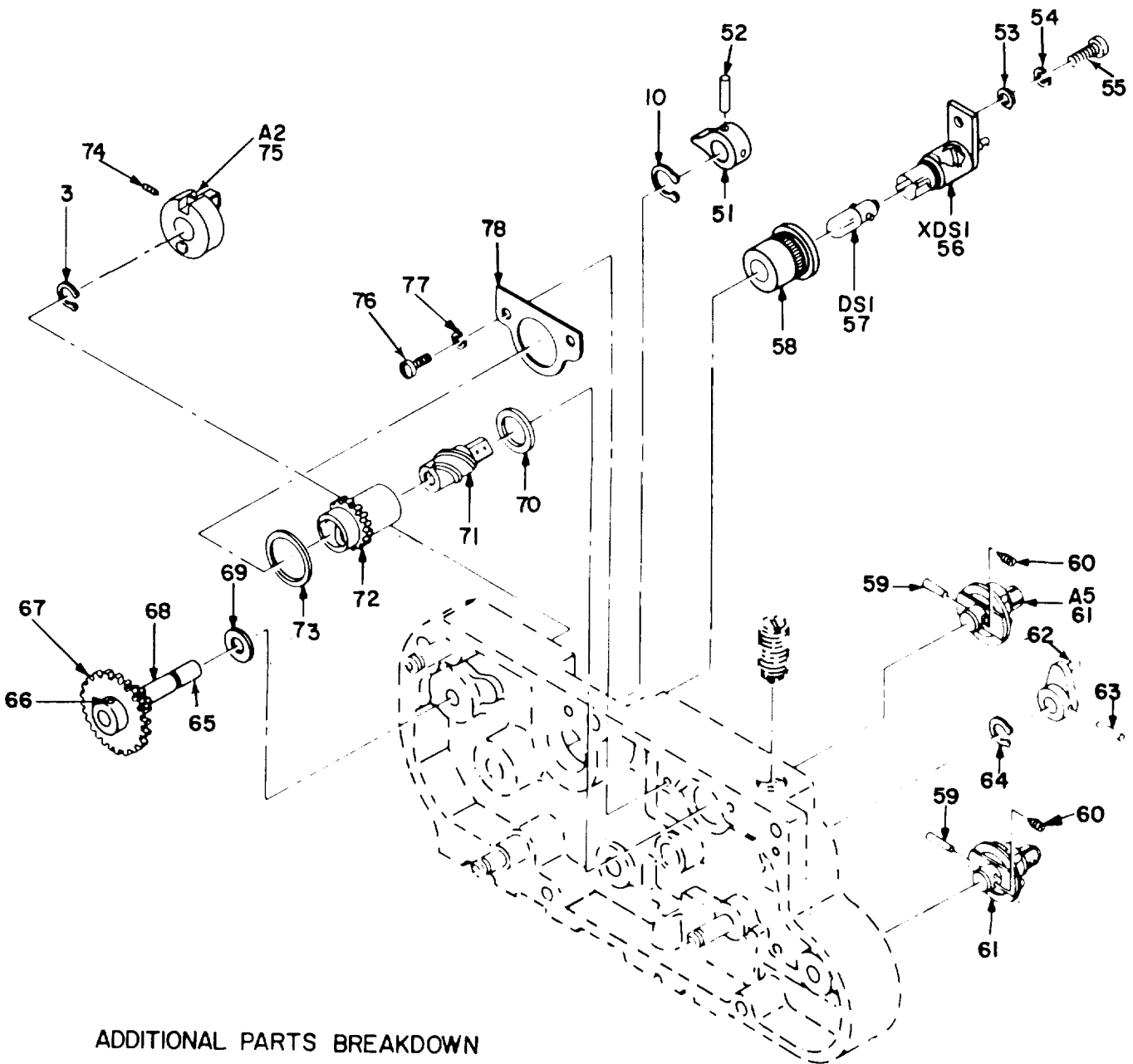


Figure 8. Front Panel Assembly (A300) (Including Antenna Loading Network (A28)), Selector Mechanism Assembly (A300A3) (Sheet 1 of 2)



ADDITIONAL PARTS BREAKDOWN

NOTE: FOR COMPLETE REFERENCE DESIGNATIONS
PREFIX WITH A300A3

ELOMI091

Figure 8. Front Panel Assembly (A300) (Including Antenna Loading Network (A28)) , Selector Mechanism Assembly (A300A3) (Sheet 2 of 2).

(1) ITEM NO	(2) SMR CODE	(3) FSCM	(4) PART NUMBER	(5) DESCRIPTION AND USABLE ON CODES (UOC)	(6) QTY
-------------------	--------------------	-------------	-----------------------	--	------------

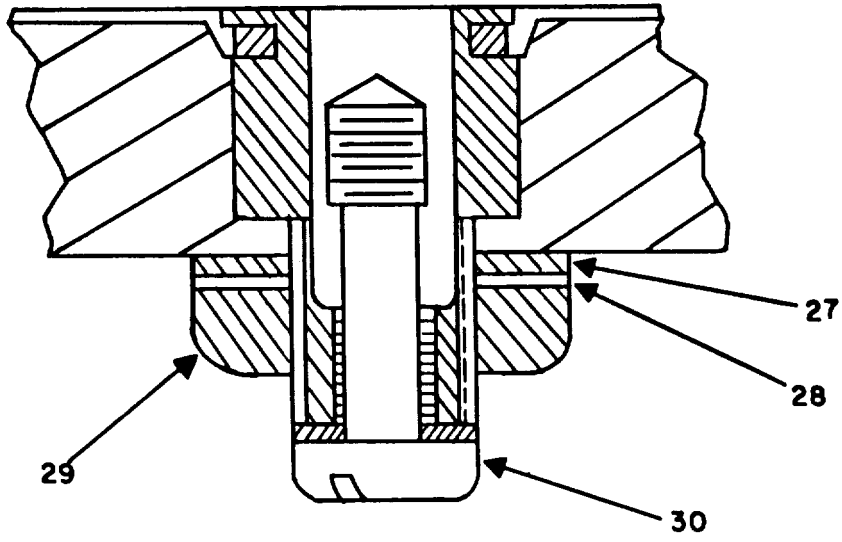
GROUP 0502 FRONT PANEL ASSEMBLY
(A300) (INCLUDES ANTENNA
LOADING NETWORK (A28)),
SELECTOR MECHANISM ASSY
(A300A3)

FIGURE 8

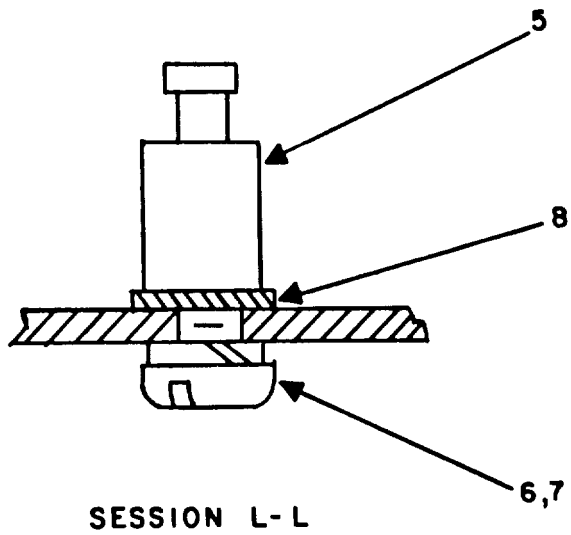
1	XBDZZ	80063	SM-B-447126-2	PLUNGER, QUICK RELEA	1
2	PADZZ	80063	SM-D-449062	HOUSING, MECHANICAL	1
3	XBDZZ	80063	SM-B-447415-2	WASHER, FLAT	4
4	XBDZZ	80063	SM-D-447420	GEAR, ANTIBACKLASH, S	1
5	XBDZZ	80063	SM-D-447420-3	GEARSHAFT, SPUR	1
6	XBDZZ	80063	SM-D-447420-4	SPRING, HELICAL, COMP	2
7	XBDZZ	80063	SM-D-447420-2	GEAR, SPUR	1
8	XBDZZ	80063	SM-D-447420-1	GEAR, SPUR	1
9	XBDZZ	80063	SM-B-447414	PIN, GROOVED, HEADED	1
10	PADZZ	80063	SM-B-447415-5	WASHER, THRUST	4
11	XBDZZ	80063	SM-C-620776	GEAR, SPUR, SPECIAL	1
12	XBDZZ	80063	SM-C-449089	GEAR SECTOR, SPUR	1
13	PADZZ	96906	MS16624-5018-1	RING, RETAINING	3
14	XBDZZ	80063	SM-B-620777	SHIM	1
15	XBDZZ	80063	SM-C-620775	GEAR, SPUR	1
16	XBDZZ	80063	SM-B-447245	GEAR, SPUR	1
17	PADZZ	96906	MS24692-6	PIN, TAPERED, PLAIN	1
18	PADZZ	96906	MS16562-6	PIN, SPRING	1
19	XBDZZ	80063	SM-B-447246	GEAR, SPUR	1
20	PADZZ	96906	MS28775-007	PACKING, PREFORMED	2
21	PADZZ	80063	SM-C-449064	RESISTOR, FIXED, COMP	1
22	PFDZZ	80063	SM-B-449094	SHAFT ASSEMBLY	1
23	XBDZZ	80063	SM-B-447790	PIN, STRAIGHT, HEADLE	2
24	XBDZZ	80063	SM-D-449091	SHAFT ASSEMBLY, SELE	1
25	PADZZ	80063	SM-B-447415-12	WASHER, FLAT	1
26	PADZZ	80063	SM-C-447312-1	PACKING, PREFORMED	4
27	XBDZZ	80063	SM-C-447109	MASK, DIAL	1
28	XBDZZ	80063	SM-B-449090-2	SPRING, HELICAL, EXTE	1
29	PADZZ	80063	SM-B-447415-13	SPACER, RING	1
30	PADZZ	80063	SM-C-449066	MASK ASSEMBLY	1
31	PADZZ	80063	SM-C-447312-2	PACKING PREFORMED	2
32	PADZZ	96906	MS35206-206	SCREW, MACHINE	2
33	PADZZ	96906	MS35338-39	WASHER, LOCK	2
34	XBDZZ	80063	SM-B-447947	SPRING, HELICAL, EXTE	1
35	PADZZ	96906	MS16624-5015-1	RING, RETAINING	1
36	PADZZ	80063	SM-B-447021	ARM ASSEMBLY, DETENT	1
37	XBDZZ	80063	SM-D-447421-4	SPRING	2
38	XBDZZ	80063	SM-D-447421-2	GEAR	1
39	XBDZZ	80063	SM-D-447421	GEAR, ANTIBACKLASH, S	1
40	XBDZZ	80063	SM-D-447421-1	GEAR	1
41	XBDZZ	80063	SM-D-447421-3	GEARSHAFT, SPUR	1
42	PADZZ	80063	SM-B-447015	RETAINER, ARM	1
43	PADZZ	80063	SM-B-449090-1	SPRING, HELICAL, EXTE	1

(1) ITEM NO	(2) SMR CODE	(3) FSCM	(4) PART NUMBER	(5) DESCRIPTION AND USABLE ON CODES (UOC)	(6) QTY
44	XBDZZ	80063	SM-B-447365	GEAR, SPUR	1
45	PADZZ	80063	SM-B-449092	SHAFT ASSEMBLY	1
46	XBDZZ	80063	SM-C-449060	SHAFT, SHOULDERED	1
47	PADZZ	96906	MS20426AD3-6	RIVET, SOLID	4
48	XBDZZ	80063	SM-C-447081	DIAL, SCALE	1
49	XBDZZ	80063	SM-C-447012	DETENT PLATE	1
50	XBDZZ	80063	SM-B-447009	RETAINER, SPRING	1
51	PADZZ	80063	SM-B-447244	STOP	1
52	PADZZ	96906	MS35675-3	PIN, GROOVED, HEADLES	1
53	PAFZZ	88044	AN960-4L	WASHER, FLAT	1
54	PAFZZ	96906	MS35338-40	WASHER, LOCK	1
55	PAFZZ	96906	MS35206-214	SCREW, MACHINE	1
56	PAFZZ	80063	SM-B-447044	HOUSING ASSEMBLY	1
57	PAFZZ	80063	SM-B-449088	LAMP, INCANDESCENT	1
58	XBDZZ	80063	SM-B-447659	BUSHING, SLEEVE	1
59	PADZZ	96906	MS16562-3	PIN, SPRING	2
60	PADZZ	96906	MS51963-9	SETSCREW	2
61	XBDZZ	80063	SM-C-447570	COUPLER ASSEMBLY, RE	2
62	XBDZZ	80063	SM-B-447416	ARM	1
63	PADZZ	96906	MS16562-4	PIN, SPRING	1
64	PADZZ	80063	SM-B-447415-1	WASHER, THRUST	1
65	XBDZZ	80063	SM-B-449093	SHAFT ASSY, KC OSC	1
66	PADZZ	96906	MS24692-3	PIN, TAPERED, PLAIN	1
67	XBDZZ	80063	SM-B-447271	GEAR	1
68	PADZZ	80063	SM-C-449065	PINION	1
69	XBDZZ	80063	SM-B-447415-7	WASHER, FLAT	1
70	XBDZZ	80063	SM-B-447415-9	SPACER, RING	1
71	XBDZZ	80063	SM-B-447069	GEAR, WORM	1
72	XBDZZ	80063	SM-C-447068	GEAR	1
73	XBDZZ	80063	SM-B-447415-3	SPACER, RING	1
74	PADZZ	96906	MS16562-10	PIN, SPRING	1
75	XBDZZ	80063	SM-B-447967	COUPLING ASSEMBLY	1
76	PADZZ	96906	MS35265-27	SCREW, MACHINE	2
77	PADZZ	96906	MS35338-41	WASHER, LOCK	2
78	XBDZZ	80063	SM-B-447364	PLATE, RETAINING, BEA	1

END OF FIGURE



DETAIL 'A'



SESSION L-L

ELOMI093

Figure 9. Chassis Assembly (A200) (Sheet 2 of 2).

(1) ITEM NO	(2) SMR CODE	(3) FSCM	(4) PART NUMBER	(5) DESCRIPTION AND USABLE ON CODES (UOC)	(6) QTY
-------------------	--------------------	-------------	-----------------------	--	------------

GROUP 0503 CHASSIS ASSEMBLY (A200)

FIGURE 9

1	PAFZZ	96906	MS35206-214	SCREW, MACHINE	4
2	PAFZZ	13499	333-0840-000	NUT, SELF-LOCKING, SP	4
3	PAFZZ	80063	SM-C-447075	CONNECTOR, RECEPTACL	1
5	XBHZZ	80063	SM-B-447738	TERMINAL, STUD	2
6	PAHZZ	96906	MS35206-212	SCREW, MACHINE	8
7	PAHZZ	96906	MS35338-40	WASHER, LOCK	5
8	PAHZZ	96906	MS35335-85	WASHER, LOCK	3
9	PAHZZ	80063	SM-B-449095	TERMINAL, STUD	2
10	PAHZZ	96906	MS51957-2	SCREW, MACHINE	4
11	PAHZZ	96906	MS35333-86	WASHER, LOCK	2
12	PAHZZ	96906	MS35649-222	NUT, PLAIN, HEXAGON	4
13	PAHZZ	80063	SM-B-449084	TERMINAL, LUG	2
14	PAHZZ	96906	MS35649-242	NUT, PLAIN, HEXAGON	2
15	PAHZZ	96906	MS35206-213	SCREW, MACHINE	1
16	XBHZZ	80063	SM-B-447952	TERMINAL, LUG	2
17	PAHZZ	80063	SM-D-448878	CAPACITOR, VARIABLE,	1
18	PAHZZ	96906	MS35206-225	SCREW, MACHINE	6
19	PAHZZ	96906	MS35338-41	WASHER, LOCK	6
20	PAHZZ	80063	SM-B-447665	WASHER, SPRING TENSI	2
21	PAHZZ	80063	SM-D-448879	CHASSIS ASSEMBLY	1
22	PAHZZ	80063	SM-D-447137	CAPACITOR, VARIABLE	1
23	PAHZZ	80063	SM-B-447766	SUPPORT, COAXIAL CAB	1
24	XBHZZ	80063	SM-B-447951	WASHER, FLAT	2
25	PAHZZ	80063	SM-C-447720	CONNECTOR, RECEPTACL	1
26	PAHZZ	80063	SM-D-447180	CONNECTOR, PLUG, ELE	1
27	PAHZZ	80063	SM-B-447043-2	SPACER, RING	1
28	PAHZZ	80063	SM-B-620778	WASHER, LOCK	1
29	PAHZZ	80063	SM-B-447960	NUT, PLAIN, HEXAGON	1
30	PAHZZ	80063	SM-B-447958	SCREW, ASSEMBLED WAS	1
31	XDHZZ	80063	SM-B-620772	SUPPORT	1
32	XBHZZ	80063	SM-B-447383-6	NUT, PLAIN, CLINCH	2
33	PAHZZ	96906	MS35338-39	WASHER, LOCK	2
34	PAHZZ	80063	SM-B-447103	SOCKET, PLUG-IN ELEC	1
35	PAHZZ	80063	SM-D-448882	CONNECTOR, RECEPTACL	1
36	PAHZZ	96906	MS16535-56	RIVET, TUBULAR	18
37	XBHZZ	80063	SM-B-447383-2	NUT, PLAIN, CLINCH	20
38	PAHZZ	81349	RCR07G152JS	RESISTOR, FIXED, COMP	9
39	XBHZZ	80063	SM-B-447551	CLAMP, CAPACITOR	1
40	XBHZZ	80063	SM-B-447175-7	RIVET SOLID	2
41	XBHZZ	80063	SM-B-447175-5	EYELET, METALLIC	1
42	PAHZZ	80063	SM-B-447256	RESISTOR, FIXED, COMP	1
43	XBHZZ	80063	SM-B-447475	PIN, SHOULDER, HEADLE	6
44	XBHZZ	80063	SM-B-447240	NUT, SPACER	4
45	PAHZZ	80063	SM-B-447018	BUSHING, CAPTIVE	2
46	XDHZZ	80063	SM-B-447383-3	NUT, PLAIN, CLINCH	6
47	XBHZZ	80063	SM-B-448843	BUSHING	3
48	XBHZZ	80063	SM-B-447422	BUSHING, SLEEVE	2

(1) ITEM NO	(2) SMR CODE	(3) FSCM	(4) PART NUMBER	(5) DESCRIPTION AND USABLE ON CODES (UOC)	(6) QTY
49	PAHZZ	80063	SM-D-449073	CONNECTOR, RECEPTACL	1
50	XBHZZ	80063	SM-B-447277	SPACER, SPECIAL	1
51	XBHZZ	80063	SM-B-447276	PIN, GROOVED, HEADED	1
52	PAHZZ	80063	SM-D-448881	CONNECTOR, RECEPTACL	1
53	PAHZZ	80063	SM-D-448883	CONNECTOR ASSEMBLY	1

END OF FIGURE

CROSS-REFERENCE INDEXES

STOCK NUMBER	NATIONAL STOCK NUMBER INDEX		STOCK NUMBER	NATIONAL STOCK NUMBER INDEX	
	FIG.	ITEM		FIG.	ITEM
8465-00-001-6476	1	10	5310-00-543-2410	9	7
8465-00-001-6477	1	9	5310-00-543-5060	8	33
5910-00-007-3974	5	15		9	33
5820-00-007-5210	3	32	5330-00-551-8250	3	78
5820-00-007-9540	3	35	5355-00-552-0451	7	3
5820-00-007-9542	3	74	5340-00-558-7868	5	8
5307-00-017-0505	3	46	5320-00-584-0672	8	47
5310-00-022-1117	9	11	5330-00-585-7723	7	26
5310-00-022-8847	7	29	5310-00-596-7691	3	31
5965-00-043-3463	1	3	5985-00-646-2365	1	6
5310-00-045-4007	3	5	5310-00-682-5993	9	2
	7	45	5935-00-711-9278	9	25
	8	77	5365-00-715-1152	7	10
	9	19	5305-00-716-7833	7	16
5305-00-054-5636	9	10	5305-00-717-6950	8	60
5305-00-054-5647	7	36	5330-00-759-8138	4	3
5305-00-054-6651	7	4	5820-00-759-8159	3	51
5315-00-060-9351	8	52	5305-00-762-7482	3	44
5820-00-086-7138	1	2	5305-00-764-2966	7	32
5985-00-086-7149	1	4	5340-00-782-8737	5	19
5305-00-088-9044	4	7	5820-00-813-0192	7	47
5905-00-106-1356	9	38	5950-00-813-0263	5	16
5910-00-113-9817	5	12	5315-00-823-8740	7	14
5820-00-122-2640	7	48	5950-00-824-0203	5	11
5340-00-134-3493	6	3	5340-00-825-4826	7	54
5905-00-141-1183	5	14	5340-00-826-4023	7	55
5355-00-145-0587	8	30	5320-00-828-3304	9	36
5310-00-167-0831	8	53	5935-00-832-4904	7	28
5360-00-173-8183	8	43	5820-00-832-6227	3	53
5940-00-177-4487	9	13	5340-00-843-0003	7	57
5315-00-187-3216	8	66	5315-00-843-7988	8	59
5315-00-187-3218	8	17	5315-00-844-3940	8	63
5365-00-187-9033	8	35	5315-00-844-3942	8	18
5340-00-236-0638	4	1	5315-00-844-3943	8	74
5305-00-253-5603	3	8	5310-00-846-4632	8	10
5820-00-253-8919	8	36	5315-00-847-3735	7	7
5310-00-257-6223	3	30	6240-00-851-4352	8	57
	9	28	5310-00-889-2583	7	17
5999-00-259-5009	2	1	5310-00-889-2584	9	20
5330-00-292-0577	8	20	5310-00-889-2585	7	24
5820-00-295-7122	2	2	5310-00-889-2586	7	8
4820-00-296-9677	6	5	5305-00-889-2998	7	53
9905-00-404-5959	6	1	5305-00-889-3023	3	13
5365-00-432-3584	8	13	5305-00-889-3024	4	5
5950-00-488-3056	5	4	5305-00-889-3116	5	2
5340-00-497-9853	6	2		9	15
5305-00-543-2394	8	76	5360-00-889-3298	3	15
5310-00-543-2410	3	25	5360-00-889-3299	7	11
	5	3	5355-00-889-3424	7	6
	8	54	5820-00-889-3803	1	5

CROSS-REFERENCE INDEXES

STOCK NUMBER	NATIONAL STOCK NUMBER INDEX			
	FIG.	ITEM	STOCK NUMBER	FIG. ITEM
5910-00-889-4523	5	5	5355-00-951-5165	7 18
5330-00-892-4293	7	20	5910-00-951-5200	5 13
5935-00-892-9119	7	27	5915-00-951-5203	3 27
5935-00-892-9139	7	25	5310-00-951-5660	7 34
5940-00-900-3755	9	9	5310-00-951-5661	7 23
5305-00-901-6855	3	28	5945-00-951-6458	3 26
	9	30	5935-00-951-6473	9 26
6135-00-926-8322	1	11	5935-00-951-6474	9 3
9320-00-930-0724	6	6	5315-00-951-7377	3 23
5355-00-930-0728	7	12	5935-00-951-7587	9 34
5355-00-930-0729	7	30	5945-00-951-9880	3 48
5305-00-930-0736	3	64	6140-00-952-1798	3 1
5310-00-930-0758	3	29	5915-00-957-0277	3 73
	9	29	6110-00-957-1460	3 67
5820-00-930-3725	1	1	5305-00-958-6382	8 32
5820-00-930-3727	3	10	3120-00-973-1508	7 35
5820-00-930-3728	3	68	5820-00-973-1622	3 20
5820-00-930-3729	3	61	5820-00-973-1731	3 2
5820-00-930-3730	3	56	5340-00-973-1732	7 37
5963-00-930-3731	3	76	5935-00-973-1733	7 41
5820-00-930-3732	3	57	5355-00-973-1734	7 15
5820-00-930-3734	3	18	5935-00-973-1859	7 42
5820-00-930-3735	3	59	5910-00-973-2489	9 22
5820-00-930-3736	3	58	5820-00-973-3586	3 70
5955-00-930-3737	3	77	5820-00-973-3595	3 72
5820-00-930-3738	3	66	5820-00-973-3600	3 69
5820-00-930-3739	3	54	5820-00-973-3601	3 71
5820-00-930-3740	3	60	5820-00-973-3603	3 9
5820-00-930-3741	3	55	5820-00-973-3604	3 21
5910-00-930-3873	9	17	5310-00-973-3697	7 19
5940-00-930-4318	9	35	5820-00-973-3957	7 50
5940-00-930-4319	9	52	5330-00-973-3960	7 46
5940-00-930-4320	9	53	5355-00-973-3962	7 40
5310-00-933-8118	7	52	5355-00-973-4334	3 16
5310-00-934-9738	9	12	5930-00-978-2110	7 5
5310-00-934-9739	3	11	5935-00-978-4357	7 43
	5	6	5905-00-978-7455	7 38
	9	14	6695-00-983-8797	7 39
5820-00-937-3812	8	56	5305-00-984-4982	9 18
5820-00-937-3813	3	19	5305-00-984-4983	3 4
5305-00-937-3846	3	36		4 2
5935-00-937-4003	9	49		6 4
5310-00-937-4458	3	14	5305-00-984-4984	3 40
5820-00-937-6793	7	31	5305-00-984-4988	3 41
5940-00-937-9929	9	23	5915-00-985-0867	7 1
5310-00-939-1063	3	12	5305-00-993-0190	3 37
	9	8		5 18
5310-00-951-4679	3	38		7 51
	5	7		8 55
5305-00-951-5164	3	49		9 1

CROSS-REFERENCE INDEXES

NATIONAL STOCK NUMBER INDEX

STOCK NUMBER	FIG.	ITEM
5305-00-993-0191	3	24
	9	6
5340-00-995-6333	5	10
6135-01-034-2239	1	11
5330-01-049-0038	3	75
8465-01-073-8326	1	8
5820-01-098-2957	9	21
5820-01-098-4244	8	68
5310-01-098-9970	8	64
5310-01-098-9971	8	25
5365-01-099-0116	8	29
5365-01-099-3418	3	39
5365-01-099-3420	9	27
5820-01-099-8773	8	2
5820-01-099-9173	7	13
6625-01-099-9411	8	45
5820-01-099-9752	3	62
6625-01-099-9755	8	42
3040-01-100-1280	8	51
5305-01-100-2014	7	44
6625-01-100-2325	9	45

CROSS-REFERENCE INDEXES

FSCM	PART NUMBER	PART NUMBER INDEX		FIG.	ITEM
		STOCK NUMBER			
80058	AB-591/PRC-25	5985-00-086-7149		1	4
88044	AN960-4L	5310-00-167-0831		8	53
80058	AT-271A/PRC	5985-00-646-2365		1	6
80058	AT-892/PRC-25	5820-00-889-3803		1	5
80058	BA-5598/U	6135-01-034-2239		1	11
80058	BA4386PRC25	6135-00-926-8322		1	11
80058	H-250/U	5965-00-043-3463		1	3
81349	MIL-F-43834	8465-01-073-8326		1	8
		8465-00-001-6476		1	10
81349	MIL-S-43828	8465-00-001-6477		1	9
96906	MS14046-4	5950-00-488-3056		5	4
96906	MS16535-56	5320-00-828-3304		9	36
96906	MS16562-10	5315-00-844-3943		8	74
96906	MS16562-3	5315-00-843-7988		8	59
96906	MS16562-4	5315-00-844-3940		8	63
96906	MS16562-6	5315-00-844-3942		8	18
96906	MS16624-1037	5365-00-715-1152		7	10
96906	MS16624-5015-1	5365-00-187-9033		8	35
96906	MS16624-5018-1	5365-00-432-3584		8	13
96906	MS20426AD3-6	5320-00-584-0672		8	47
96906	MS21208-C0410	5340-00-826-4023		7	55
96906	MS21208-C0610	5340-00-843-0003		7	57
96906	MS21208-C0620	5340-00-825-4826		7	54
96906	MS21318-1	5305-00-253-5603		3	8
96906	MS24585C238	5360-00-889-3298		3	15
96906	MS24692-3	5315-00-187-3216		8	66
96906	MS24692-6	5315-00-187-3218		8	17
96906	MS27183-3	5310-00-951-4679		3	38
				5	7
96906	MS28775-007	5330-00-292-0577		8	20
96906	MS28775-020	5330-00-585-7723		7	26
96906	MS35206-202	5305-00-762-7482		3	44
96906	MS35206-206	5305-00-958-6382		8	32
96906	MS35206-212	5305-00-993-0191		3	24
				9	6
96906	MS35206-213	5305-00-889-3116		5	2
				9	15
96906	MS35206-214	5305-00-993-0190		3	37
				5	18
				7	51
				8	55
				9	1
96906	MS35206-216	5305-00-889-2998		7	53
96906	MS35206-225	5305-00-984-4982		9	18
96906	MS35206-226	5305-00-984-4983		3	4
				4	2
				6	4
96906	MS35206-227	5305-00-984-4984		3	40
96906	MS35206-228	5305-00-984-4988		3	41
96906	MS35207-260	5305-00-088-9044		4	7
96906	MS35265-27	5305-00-543-2394		8	76

CROSS-REFERENCE INDEXES

FSCM	PART NUMBER	PART NUMBER INDEX		FIG.	ITEM
		STOCK NUMBER			
96906	MS35333-110	5310-00-022-8847		7	29
96906	MS35333-86	5310-00-022-1117		9	11
96906	MS35335-32	5310-00-596-7691		3	31
96906	MS35335-85	5310-00-939-1063		3	12
				9	8
96907	MS35337-39			3	45
96906	MS35337-42			3	50
96906	MS35338-135	5310-00-933-8118		7	52
96906	MS35338-39	5310-00-543-5060		8	33
				9	33
96906	MS35338-40	5310-00-543-2410		3	25
				5	3
				8	54
				9	7
96906	MS35338-41	5310-00-045-4007		3	5
				7	45
				8	77
				9	19
96906	MS35649-222	5310-00-934-9738		9	12
96906	MS35649-242	5310-00-934-9739		3	11
				5	6
				9	14
96906	MS35675-3	5315-00-060-9351		8	52
96906	MS51957-2	5305-00-054-5636		9	10
96906	MS51957-27	5305-00-054-6651		7	4
96906	MS51959-2	5305-00-764-2966		7	32
96906	MS51963-9	5305-00-717-6950		8	60
96906	MS51981-8	5305-00-716-7833		7	16
96906	MS9021-020	5330-00-551-8250		3	78
96906	MS90538-04	5950-00-824-0203		5	11
96906	MS91524-1	5355-00-552-0451		7	3
81349	M39003/01-2991	5910-00-007-3974		5	15
81349	M39014/02-1345	5910-00-113-9817		5	12
80205	NAS1397P3	5340-00-995-6333		5	10
80205	NAS1397P4N	5340-00-782-8737		5	19
81349	RCR07G101JS	5905-00-141-1183		5	14
81349	RCR07G152JS	5905-00-106-1356		9	38
80058	RT-841/PRC-77	5820-00-930-3725		1	1
80063	SCB91329	5999-00-259-5009		2	1
80063	SM-B-180054	5330-01-049-0038		3	75
80063	SM-B-182386	5820-00-295-7122		2	2
80063	SM-B-447009			8	50
80063	SM-B-447015	6625-01-099-9755		8	42
80063	SM-B-447018	6625-01-100-2325		9	45
80063	SM-B-447019	5305-00-937-3846		3	36
80063	SM-B-447021	5820-00-253-8919		8	36
80063	SM-B-447043-1	5365-01-099-3418		3	39
80063	SM-B-447043-2	5365-01-099-3420		9	27
80063	SM-B-447044	5820-00-937-3812		8	56
80063	SM-B-447066-3	5305-00-889-3023		3	13
80063	SM-B-447066-4	5305-00-951-5164		3	49

CROSS-REFERENCE INDEXES

FSCM	PART NUMBER	PART NUMBER INDEX		FIG.	ITEM
		STOCK NUMBER			
80063	SM-B-447069			8	71
80063	SM-B-447103	5935-00-951-7587		9	34
80063	SM-B-447107-5			7	9
80063	SM-B-447126-2			8	1
80063	SM-B-447148	5905-00-978-7455		7	38
80063	SM-B-447175-5			9	41
80063	SM-B-447175-7			9	40
80063	SM-B-447221			7	2
80063	SM-B-447222	6695-00-983-8797		7	39
80063	SM-B-447223	5330-00-892-4293		7	20
80063	SM-B-447224	5305-00-889-3024		4	5
80063	SM-B-447225	5355-00-973-3962		7	40
80063	SM-B-447240			9	44
80063	SM-B-447244	3040-01-100-1280		8	51
80063	SM-B-447245			8	16
80063	SM-B-447246			8	19
80063	SM-B-447256			9	42
80063	SM-B-447265	5340-00-497-9853		6	2
80063	SM-B-447271			8	67
80063	SM-B-447276			9	51
80063	SM-B-447277			9	50
80063	SM-B-447299	5820-00-937-6793		7	31
80063	SM-B-447302-2	5315-00-847-3735		7	7
80063	SM-B-447302-3	5315-00-823-8740		7	14
80063	SM-B-447303	5310-00-889-2583		7	17
80063	SM-B-447304	5360-00-889-3299		7	11
80063	SM-B-447308	5310-00-973-3697		7	19
80063	SM-B-447320	9320-00-930-0724		6	6
80063	SM-B-447355	5330-00-973-3960		7	46
80063	SM-B-447364			8	78
80063	SM-B-447365			8	44
80063	SM-B-447383-2			9	37
80063	SM-B-447383-3			9	46
80063	SM-B-447383-6			9	32
80063	SM-B-447392	3120-00-973-1508		7	35
80063	SM-B-447414			8	9
80063	SM-B-447415-1	5310-01-098-9970		8	64
80063	SM-B-447415-12	5310-01-098-9971		8	25
80063	SM-B-447415-13	5365-01-099-0116		8	29
80063	SM-B-447415-2			8	3
80063	SM-B-447415-3			8	73
80063	SM-B-447415-5	5310-00-846-4632		8	10
80063	SM-B-447415-7			8	69
80063	SM-B-447415-9			8	70
80063	SM-B-447416			8	62
80063	SM-B-447422			9	48
80063	SM-B-447439	5935-00-973-1733		7	41
80063	SM-B-447440	5340-00-973-1732		7	37
80063	SM-B-447445-3			7	33
80063	SM-B-447445-4	5305-00-054-5647		7	36
80063	SM-B-447445-6			7	22

CROSS-REFERENCE INDEXES

FSCM	PART NUMBER	PART NUMBER INDEX		FIG.	ITEM
		STOCK NUMBER			
80063	SM-B-447461	9905-00-404-5959		6	1
80063	SM-B-447470	5910-00-889-4523		5	5
80063	SM-B-447473	5910-00-951-5200		5	13
80063	SM-B-447475			9	43
80063	SM-B-447551			9	39
80063	SM-B-447659			8	58
80063	SM-B-447665	5310-00-889-2584		9	20
80063	SM-B-447694-1	5310-00-889-2586		7	8
80063	SM-B-447694-2			4	6
80063	SM-B-447694-3	5310-00-951-5660		7	34
80063	SM-B-447694-4	5310-00-951-5661		7	23
80063	SM-B-447694-6	5310-00-889-2585		7	24
80063	SM-B-447732			7	58
80063	SM-B-447738			9	5
80063	SM-B-447762			5	1
80063	SM-B-447763			5	17
80063	SM-B-447766	5940-00-937-9929		9	23
80063	SM-B-447768	5340-00-558-7868		5	8
80063	SM-B-447771			3	52
80063	SM-B-447784	5355-00-973-4334		3	16
80063	SM-B-447785			3	65
80063	SM-B-447786	5305-00-930-0736		3	64
80063	SM-B-447790			8	23
80063	SM-B-447930	5310-00-937-4458		3	14
80063	SM-B-447945			4	8
80063	SM-B-447947			8	34
80063	SM-B-447951			9	24
80063	SM-B-447952			9	16
80063	SM-B-447958	5305-00-901-6855		3	28
				9	30
80063	SM-B-447960	5310-00-930-0758		3	29
				9	29
80063	SM-B-447967			8	75
80063	SM-B-447968	5305-01-100-2014		7	44
80063	SM-B-448843			9	47
80063	SM-B-449084	5940-00-177-4487		9	13
80063	SM-B-449086	5307-00-017-0505		3	46
80063	SM-B-449088	6240-00-851-4352		8	57
80063	SM-B-449090-1	5360-00-173-8183		8	43
80063	SM-B-449090-2			8	28
80063	SM-B-449092	6625-01-099-9411		8	45
80063	SM-B-449093			8	65
80063	SM-B-449094			8	22
80063	SM-B-449095	5940-00-900-3755		9	9
80063	SM-B-620765			3	43
80063	SM-B-620769			3	42
80063	SM-B-620772			9	31
80063	SM-B-620777			8	14
80063	SM-B-620778	5310-00-257-6223		3	30
				9	28
80063	SM-B-620779			7	49

CROSS-REFERENCE INDEXES

FSCM	PART NUMBER	PART NUMBER INDEX		FIG.	ITEM
		STOCK NUMBER			
80063	SM-C-447012			8	49
80063	SM-C-447052	5355-00-889-3424		7	6
80063	SM-C-447068			8	72
80063	SM-C-447075	5935-00-951-6474		9	3
80063	SM-C-447081			8	48
80063	SM-C-447085	5945-00-951-6458		3	26
80063	SM-C-447094	5930-00-978-2110		7	5
80063		5935-00-892-9139		7	25
80063	SM-C-447109			8	27
80063	SM-C-447121-3	5315-00-951-7377		3	23
80063	SM-C-447163	5820-00-086-7138		1	2
80063	SM-C-447226			7	21
80063	SM-C-447287	5820-01-099-9173		7	13
80063	SM-C-447306	5355-00-951-5165		7	18
80063	SM-C-447307	5355-00-973-1734		7	15
80063	SM-C-447312-1			8	26
80063	SM-C-447312-2			8	31
80063	SM-C-447321-1	5340-00-236-0638		4	1
80063	SM-C-447321-2	5340-00-134-3493		6	3
80063	SM-C-447403	5935-00-978-4357		7	43
80063	SM-C-447566	5945-00-951-9880		3	48
80063	SM-C-447570			8	61
80063	SM-C-447720	5935-00-711-9278		9	25
80063	SM-C-447928	5935-00-892-9119		7	27
80063	SM-C-447976-1	5355-00-930-0728		7	12
80063	SM-C-447976-2	5355-00-930-0729		7	30
80063	SM-C-448888	5820-00-930-3727		3	10
80063	SM-C-448890			3	7
80063	SM-C-448906	5820-01-099-9752		3	62
80063	SM-C-448906-1			3	63
80063	SM-C-449060			8	46
80063	SM-C-449064			8	21
80063	SM-C-449065	5820-01-098-4244		8	68
80063	SM-C-449066	5355-00-145-0587		8	30
80063	SM-C-449089			8	12
80063	SM-C-620768	5330-00-759-8138		4	3
80063	SM-C-620775			8	15
80063	SM-C-620776			8	11
80063	SM-C-621269	5820-00-007-5210		3	32
80063	SM-C-621270			3	33
80063	SM-C-621271			3	34
80063	SM-C-875638			3	47
80063	SM-D-447137	5910-00-973-2489		9	22
80063	SM-D-44180	5935-00-951-6473		9	26
80063	SM-D-447251	5915-00-951-5203		3	27
80063	SM-D-447264			6	7
80063	SM-D-447313	5820-00-973-3957		7	50
80063	SM-D-447314	5820-00-973-3604		3	21
80063	SM-D-447316	5820-00-973-1622		3	20
80063	SM-D-447322-1	4820-00-296-9677		6	5
80063	SM-D-447351	5820-00-973-1731		3	2

CROSS-REFERENCE INDEXES

FSCM	PART NUMBER	PART NUMBER INDEX		FIG.	ITEM
		STOCK NUMBER			
80063	SM-D-447367	5915-00-985-0867		7	1
80063	SM-D-447399			4	4
80063	SM-D-447420			8	4
80063	SM-D-447420-1			8	8
80063	SM-D-447420-2			8	7
80063	SM-D-447420-3			8	5
80063	SM-D-447420-4			8	6
80063	SM-D-447421			8	39
80063	SM-D-447421-1			8	40
80063	SM-D-447421-2			8	38
80063	SM-D-447421-3			8	41
80063	SM-D-447421-4			8	37
80063	SM-D-448739	5915-00-957-0277		3	73
80063	SM-D-448740	5820-00-930-3740		3	60
80063	SM-D-448741	5820-00-930-3729		3	61
80063	SM-D-448742	5820-00-930-3735		3	59
80063	SM-D-448743	5820-00-930-3736		3	58
80063	SM-D-448744	5820-00-930-3738		3	66
80063	SM-D-448745	5820-00-930-3739		3	54
80063	SM-D-448746	5955-00-930-3737		3	77
80063	SM-D-448752	5820-00-930-3734		3	18
80063	SM-D-448753	5820-00-832-6227		3	53
80063	SM-D-448798	5820-00-930-3741		3	55
80063	SM-D-448877			3	3
80063	SM-D-448878	5910-00-930-3873		9	17
80063	SM-D-448879	5820-01-098-2957		9	21
80063	SM-D-448881	5940-00-930-4319		9	52
80063	SM-D-448882	5940-00-930-4318		9	35
80063	SM-D-448883	5940-00-930-4320		9	53
80063	SM-D-448884			3	17
80063	SM-D-448955			3	22
80063	SM-D-448971	5820-00-759-8159		3	51
80063	SM-D-449039	5950-00-813-0263		5	16
80063	SM-D-449062	5820-01-099-8773		8	2
80063	SM-D-449063-1			7	56
80063	SM-D-449067	5820-00-122-2640		7	48
80063	SM-D-449073	5935-00-937-4003		9	49
80063	SM-D-449091			8	24
80063	SM-D-621272	5820-00-007-9542		3	74
80063	SM-D-621274	5820-00-007-9540		3	35
80063	SM-D-621280			5	9
80063	SM-D-875637	5820-00-937-3813		3	19
80063	SM-D-875659	5820-00-930-3728		3	68
80063	SM-D-875672	5820-00-930-3730		3	56
80063	SM-D-875692	5820-00-930-3732		3	57
80063	SM-D-875701	5963-00-930-3731		3	76
80063	SM-D-875704	5820-00-973-3600		3	69
80063	SM-D-875705	5820-00-973-3586		3	70
80063	SM-D-875708	6110-00-957-1460		3	67
80063	SM-D-875720	5820-00-973-3595		3	72
80063	SM-D-875722	5820-00-973-3601		3	71

CROSS-REFERENCE INDEXES

PART NUMBER INDEX

FSCM	PART NUMBER	STOCK NUMBER	FIG.	ITEM
80063	SM-D-875724	5820-00-973-3603	3	9
80063	SMD447322	6140-00-952-1798	3	1
80063	SMD448913		3	6
80063	SMD449063	5820-00-813-0192	7	47
80058	ST-138/PRC-25		1	7
80058	U-317/U	5935-00-973-1859	7	42
80058	UG-1873/U	5935-00-832-4904	7	28
13499	333-0840-000	5310-00-682-5993	9	2

CROSS-REFERENCE INDEXES

FIGURE AND ITEM NUMBER INDEX

FIG.	ITEM	STOCK NUMBER	FSCM	PART NUMBER
1	1	5820-00-930-3725	80058	RT-841/PRC-77
1	2	5820-00-086-7138	80063	SM-C-447163
1	3	5965-00-043-3463	80058	H-250/U
1	4	5985-00-086-7149	80058	AB-591/PRC-25
1	5	5820-00-889-3803	80058	AT-892/PRC-25
1	6	5985-00-646-2365	80058	AT-271A/PRC
1	7		80058	ST-138/PRC-25
1	8	8465-01-073-8326	81349	MIL-F-43834
1	9	8465-00-001-6477	81349	MIL-S-43828
1	10	8465-00-001-6476	81349	MIL-F-43834
1	11	6135-00-926-8322	80058	BA4386PRC25
1	11	6135-01-034-2239	80058	BA-5598/U
2	1	5999-00-259-5009	80063	SCB91329
2	2	5820-00-295-7122	80063	SM-B-182386
3	1	6140-00-952-1798	80063	SMD447322
3	2	5820-00-973-1731	80063	SM-D-447351
3	3		80063	SM-D-448877
3	4	5305-00-984-4983	96906	MS35206-226
3	5	5310-00-045-4007	96906	MS35338-41
3	6		80063	SMD448913
3	7		80063	SM-C-448890
3	8	5305-00-253-5603	96906	MS21318-1
3	9	5820-00-973-3603	80063	SM-D-875724
3	10	5820-00-930-3727	80063	SM-C-448888
3	11	5310-00-934-9739	96906	MS35649-242
3	12	5310-00-939-1063	96906	MS35335-85
3	13	5305-00-889-3023	80063	SM-B-447066-3
3	14	5310-00-937-4458	80063	SM-B-447930
3	15	5360-00-889-3298	96906	MS24585C238
3	16	5355-00-973-4334	80063	SM-B-447784
3	17		80063	SM-D-448884
3	18	5820-00-930-3734	80063	SM-D-448752
3	19	5820-00-937-3813	80063	SM-D-875637
3	20	5820-00-973-1622	80063	SM-D-447316
3	21	5820-00-973-3604	80063	SM-D-447314
3	22		80063	SM-D-448955
3	23	5315-00-951-7377	80063	SM-C-447121-3
3	24	5305-00-993-0191	96906	MS35206-212
3	25	5310-00-543-2410	96906	MS35338-40
3	26	5945-00-951-6458	80063	SM-C-447085
3	27	5915-00-951-5203	80063	SM-D-447251
3	28	5305-00-901-6855	80063	SM-B-447958
3	29	5310-00-930-0758	80063	SM-B-447960
3	30	5310-00-257-6223	80063	SM-B-620778
3	31	5310-00-596-7691	96906	MS35335-32
3	32	5820-00-007-5210	80063	SM-C-621269
3	33		80063	SM-C-621270
3	34		80063	SM-C-621271
3	35	5820-00-007-9540	80063	SM-D-621274
3	36	5305-00-937-3846	80063	SM-B-447019
3	37	5305-00-993-0190	96906	MS35206-214

CROSS-REFERENCE INDEXES

FIGURE AND ITEM NUMBER INDEX

FIG.	ITEM	STOCK NUMBER	FSCM	PART NUMBER
3	38	5310-00-951-4679	96906	MS27183-3
3	39	5365-01-099-3418	80063	SM-B-447043-1
3	40	5305-00-984-4984	96906	MS35206-227
3	41	5305-00-984-4988	96906	MS35206-228
3	42		80063	SM-B-620769
3	43		80063	SM-B-620765
3	44	5305-00-762-7482	96906	MS35206-202
3	45		96907	MS35337-39
3	46	5307-00-017-0505	80063	SM-B-449086
3	47		80063	SM-C-875638
3	48	5945-00-951-9880	80063	SM-C-447566
3	49	5305-00-951-5164	80063	SM-B-447066-4
3	50		96906	MS35337-42
3	51	5820-00-759-8159	80063	SM-D-448971
3	52		80063	SM-B-447771
3	53	5820-00-832-6227	80063	SM-D-448753
3	54	5820-00-930-3739	80063	SM-D-448745
3	55	5820-00-930-3741	80063	SM-D-448798
3	56	5820-00-930-3730	80063	SM-D-875672
3	57	5820-00-930-3732	80063	SM-D-875692
3	58	5820-00-930-3736	80063	SM-D-448743
3	59	5820-00-930-3735	80063	SM-D-448742
3	60	5820-00-930-3740	80063	SM-D-448740
3	61	5820-00-930-3729	80063	SM-D-448741
3	62	5820-01-099-9752	80063	SM-C-448906
3	63		80063	SM-C-448906-1
3	64	5305-00-930-0736	80063	SM-B-447786
3	65		80063	SM-B-447785
3	66	5820-00-930-3738	80063	SM-D-448744
3	67	6110-00-957-1460	80063	SM-D-875708
3	68	5820-00-930-3728	80063	SM-D-875659
3	69	5820-00-973-3600	80063	SM-D-875704
3	70	5820-00-973-3586	80063	SM-D-875705
3	71	5820-00-973-3601	80063	SM-D-875722
3	72	5820-00-973-3595	80063	SM-D-875720
3	73	5915-00-957-0277	80063	SM-D-448739
3	74	5820-00-007-9542	80063	SM-D-621272
3	75	5330-01-049-0038	80063	SM-B-180054
3	76	5963-00-930-3731	80063	SM-D-875701
3	77	5955-00-930-3737	80063	SM-D-448746
3	78	5330-00-551-8250	96906	MS9021-020
4	1	5340-00-236-0638	80063	SM-C-447321-1
4	2	5305-00-984-4983	96906	MS35206-226
4	3	5330-00-759-8138	80063	SM-C-620768
4	4		80063	SM-D-447399
4	5	5305-00-889-3024	80063	SM-B-447224
4	6		80063	SM-B-447694-2
4	7	5305-00-088-9044	96906	MS35207-260
4	8		80063	SM-B-447945
5	1		80063	SM-B-447762
5	2	5305-00-889-3116	96906	MS35206-213

CROSS-REFERENCE INDEXES

FIGURE AND ITEM NUMBER INDEX

FIG.	ITEM	STOCK NUMBER	FSCM	PART NUMBER
5		3 5310-00-543-2410	96906	MS35338-40
5		4 5950-00-488-3056	96906	MS14046-4
5		5 5910-00-889-4523	80063	SM-B-447470
5		6 5310-00-934-9739	96906	MS35649-242
5		7 5310-00-951-4679	96906	MS27183-3
5		8 5340-00-558-7868	80063	SM-B-447768
5		9	80063	SM-D-621280
5		10 5340-00-995-6333	80205	NAS1397P3
5		11 5950-00-824-0203	96906	MS90538-04
5		12 5910-00-113-9817	81349	M39014/02-1345
5		13 5910-00-951-5200	80063	SM-B-447473
5		14 5905-00-141-1183	81349	RCR07G101JS
5		15 5910-00-007-3974	81349	M39003/01-2991
5		16 5950-00-813-0263	80063	SM-D-449039
5		17	80063	SM-B-447763
5		18 5305-00-993-0190	96906	MS35206-214
5		19 5340-00-782-8737	80205	NAS1397P4N
6		1 9905-00-404-5959	80063	SM-B-447461
6		2 5340-00-497-9853	80063	SM-B-447265
6		3 5340-00-134-3493	80063	SM-C-447321-2
6		4 5305-00-984-4983	96906	MS35206-226
6		5 4820-00-296-9677	80063	SM-D-447322-1
6		6 9320-00-930-0724	80063	SM-B-447320
6		7	80063	SM-D-447264
7		1 5915-00-985-0867	80063	SM-D-447367
7		2	80063	SM-B-447221
7		3 5355-00-552-0451	96906	MS91524-1
7		4 5305-00-054-6651	96906	MS51957-27
7		5 5930-00-978-2110	80063	SM-C-447094
7		6 5355-00-889-3424	80063	SM-C-447052
7		7 5315-00-847-3735	80063	SM-B-447302-2
7		8 5310-00-889-2586	80063	SM-B-447694-1
7		9	80063	SM-B-447107-5
7		10 5365-00-715-1152	96906	MS16624-1037
7		11 5360-00-889-3299	80063	SM-B-447304
7		12 5355-00-930-0728	80063	SM-C-447976-1
7		13 5820-01-099-9173	80063	SM-C-447287
7		14 5315-00-823-8740	80063	SM-B-447302-3
7		15 5355-00-973-1734	80063	SM-C-447307
7		16 5305-00-716-7833	96906	MS51981-8
7		17 5310-00-889-2583	80063	SM-B-447303
7		18 5355-00-951-5165	80063	SM-C-447306
7		19 5310-00-973-3697	80063	SM-B-447308
7		20 5330-00-892-4293	80063	SM-B-447223
7		21	80063	SM-C-447226
7		22	80063	SM-B-447445-6
7		23 5310-00-951-5661	80063	SM-B-447694-4
7		24 5310-00-889-2585	80063	SM-B-447694-6
7		25 5935-00-892-9139	80063	SM-C-447102
7		26 5330-00-585-7723	96906	MS28775-020
7		27 5935-00-892-9119	80063	SM-C-447928

CROSS-REFERENCE INDEX

FIGURE AND ITEM NUMBER INDEX

FIG.	ITEM	STOCK NUMBER	FSCM	PART NUMBER
7	28	5935-00-832-4904	80058	UG-1873/U
7	29	5310-00-022-8847	96906	MS35333-110
7	30	5355-00-930-0729	80063	SM-C-447976-2
7	31	5820-00-937-6793	80063	SM-B-447299
7	32	5305-00-764-2966	96906	MS51959-2
7	33		80063	SM-B-447445-3
7	34	5310-00-951-5660	80063	SM-B-447694-3
7	35	3120-00-973-1508	80063	SM-B-447392
7	36	5305-00-054-5647	80063	SM-B-447445-4
7	37	5340-00-973-1732	80063	SM-B-447440
7	38	5905-00-978-7455	80063	SM-B-447148
7	39	6695-00-983-8797	80063	SM-B-447222
7	40	5355-00-973-3962	80063	SM-B-447225
7	41	5935-00-973-1733	80063	SM-B-447439
7	42	5935-00-973-1859	80058	U-317/U
7	43	5935-00-978-4357	80063	SM-C-447403
7	44	5305-01-100-2014	80063	SM-B-447968
7	45	5310-00-045-4007	96906	MS35338-41
7	46	5330-00-973-3960	80063	SM-B-447355
7	47	5820-00-813-0192	80063	SMD449063
7	48	5820-00-122-2640	80063	SM-D-449067
7	49		80063	SM-B-620779
7	50	5820-00-973-3957	80063	SM-D-447313
7	51	5305-00-993-0190	96906	MS35206-214
7	52	5310-00-933-8118	96906	MS35338-135
7	53	5305-00-889-2998	96906	MS35206-216
7	54	5340-00-825-4826	96906	MS21208-C0620
7	55	5340-00-826-4023	96906	MS21208-C0410
7	56		80063	SM-D-449063-1
7	57	5340-00-843-0003	96906	MS21208-C0610
7	58		80063	SM-B-447732
8	1		80063	SM-B-447126-2
8	2	5820-01-099-8773	80063	SM-D-449062
8	3		80063	SM-B-447415-2
8	4		80063	SM-D-447420
8	5		80063	SM-D-447420-3
8	6		80063	SM-D-447420-4
8	7		80063	SM-D-447420-2
8	8		80063	SM-D-447420-1
8	9		80063	SM-B-447414
8	10	5310-00-846-4632	80063	SM-B-447415-5
8	11		80063	SM-C-620776
8	12		80063	SM-C-449089
8	13	5365-00-432-3584	96906	MS16624-5018-1
8	14		80063	SM-B-620777
8	15		80063	SM-C-620775
8	16		80063	SM-B-447245
8	17	5315-00-187-3218	96906	MS24692-6
8	18	5315-00-844-3942	96906	MS16562-6
8	19		80063	SM-B-447246
8	20	5330-00-292-0577	96906	MS28775-007

CROSS-REFERENCE INDEXES

FIGURE AND ITEM NUMBER INDEX				
FIG.	ITEM	STOCK NUMBER	FSCM	PART NUMBER
8	21		80063	SM-C-449064
8	22		80063	SM-B-449094
8	23		80063	SM-B-447790
8	24		80063	SM-D-449091
8	25	5310-01-098-9971	80063	SM-B-447415-12
8	26		80063	SM-C-447312-1
8	27		80063	SM-C-447109
8	28		80063	SM-B-449090-2
8	29	5365-01-099-0116	80063	SM-B-447415-13
8	30	5355-00-145-0587	80063	SM-C-449066
8	31		80063	SM-C-447312-2
8	32	5305-00-958-6382	96906	MS35206-206
8	33	5310-00-543-5060	96906	MS35338-39
8	34		80063	SM-B-447947
8	35	5365-00-187-9033	96906	MS16624-5015-1
8	36	5820-00-253-8919	80063	SM-B-447021
8	37		80063	SM-D-447421-4
8	38		80063	SM-D-447421-2
8	39		80063	SM-D-447421
8	40		80063	SM-D-447421-1
8	41		80063	SM-D-447421-3
8	42	6625-01-099-9755	80063	SM-B-447015
8	43	5360-00-173-8183	80063	SM-B-449090-1
8	44		80063	SM-B-447365
8	45	6625-01-099-9411	80063	SM-B-449092
8	46		80063	SM-C-449060
8	47	5320-00-584-0672	96906	MS20426AD3-6
8	48		80063	SM-C-447081
8	49		80063	SM-C-447012
8	50		80063	SM-B-447009
8	51	3040-01-100-1280	80063	SM-B-447244
8	52	5315-00-060-9351	96906	MS35675-3
8	53	5310-00-167-0831	88044	AN960-4L
8	54	5310-00-543-2410	96906	MS35338-40
8	55	5305-00-993-0190	96906	MS35206-214
8	56	5820-00-937-3812	80063	SM-B-447044
8	57	6240-00-851-4352	80063	SM-B-449088
8	58		80063	SM-B-447659
8	59	5315-00-843-7988	96906	MS16562-3
8	60	5305-00-717-6950	96906	MS51963-9
8	61		80063	SM-C-447570
8	62		80063	SM-B-447416
8	63	5315-00-844-3940	96906	MS16562-4
8	64	5310-01-098-9970	80063	SM-B-447415-1
8	65		80063	SM-B-449093
8	66	5315-00-187-3216	96906	MS24692-3
8	67		80063	SM-B-447271
8	68	5820-01-098-4244	80063	SM-C-449065
8	69		80063	SM-B-447415-7
8	70		80063	SM-B-447415-9
8	71		80063	SM-B-447069

SECTION IV

TM11-5820-667-34P

CROSS-REFERENCE INDEXES

FIG.	ITEM	FIGURE AND ITEM NUMBER INDEX		PART NUMBER
		STOCK NUMBER	FSCM	
8	72		80063	SM-C-447068
8	73		80063	SM-B-447415-3
8	74	5315-00-844-3943	96906	MS16562-10
8	75		80063	SM-B-447967
8	76	5305-00-543-2394	96906	MS35265-27
8	77	5310-00-045-4007	96906	MS35338-41
8	78		80063	SM-B-447364
9	1	5305-00-993-0190	96906	MS35206-214
9	2	5310-00-682-5993	13499	333-0840-000
9	3	5935-00-951-6474	80063	SM-C-447075
9	5		80063	SM-B-447738
9	6	5305-00-993-0191	96906	MS35206-212
9	7	5310-00-543-2410	96906	MS35338-40
9	8	5310-00-939-1063	96906	MS35335-85
9	9	5940-00-900-3755	80063	SM-B-449095
9	10	5305-00-054-5636	96906	MS51957-2
9	11	5310-00-022-1117	96906	MS35333-86
9	12	5310-00-934-9738	96906	MS35649-222
9	13	5940-00-177-4487	80063	SM-B-449084
9	14	5310-00-934-9739	96906	MS35649-242
9	15	5305-00-889-3116	96906	MS35206-213
9	16		80063	SM-B-447952
9	17	5910-00-930-3873	80063	SM-D-448878
9	18	5305-00-984-4982	96906	MS35206-225
9	19	5310-00-045-4007	96906	MS35338-41
9	20	5310-00-889-2584	80063	SM-B-447665
9	21	5820-01-098-2957	80063	SM-D-448879
9	22	5910-00-973-2489	80063	SM-D-447137
9	23	5940-00-937-9929	80063	SM-B-447766
9	24		80063	SM-B-447951
9	25	5935-00-711-9278	80063	SM-C-447720
9	26	5935-00-951-6473	80063	SM-D-447180
9	27	5365-01-099-3420	80063	SM-B-447043-2
9	28	5310-00-257-6223	80063	SM-B-620778
9	29	5310-00-930-0758	80063	SM-B-447960
9	30	5305-00-901-6855	80063	SM-B-447958
9	31		80063	SM-B-620772
9	32		80063	SM-B-447383-6
9	33	5310-00-543-5060	96906	MS35338-39
9	34	5935-00-951-7587	80063	SM-B-447103
9	35	5940-00-930-4318	80063	SM-D-448882
9	36	5320-00-828-3304	96906	MS16535-56
9	37		80063	SM-B-447383-2
9	38	5905-00-106-1356	81349	RCR07G152JS
9	39		80063	SM-B-447551
9	40		80063	SM-B-447175-7
9	41		80063	SM-B-447175-5
9	42		80063	SM-B-447256
9	43		80063	SM-B-447475
9	44		80063	SM-B-447240
9	45	6625-01-100-2325	80063	SM-B-447018

CROSS-REFERENCE INDEXES

FIG.	ITEM	FIGURE AND ITEM NUMBER INDEX		
		STOCK NUMBER	FSCM	PART NUMBER
9	46		80063	SM-B-447383-3
9	47		80063	SM-B-448843
9	48		80063	SM-B-447422
9	49	5935-00-937-4003	80063	SM-D-449073
9	50		80063	SM-B-447277
9	51		80063	SM-B-447276
9	52	5940-00-930-4319	80063	SM-D-448881
9	53	5940-00-930-4320	80063	SM-D-448883



RECOMMENDED CHANGES TO EQUIPMENT TECHNICAL PUBLICATIONS



THEN... JOT DOWN THE DOPE ABOUT IT ON THIS FORM. CAREFULLY TEAR IT OUT, FOLD IT AND DROP IT IN THE MAIL!

SOMETHING WRONG WITH THIS PUBLICATION?

FROM (PRINT YOUR UNIT'S COMPLETE ADDRESS)
 Commander
 Stateside Army Depot
 ATTN: AMSTA-US
 Stateside, N.J. 07703-5007

DATE SENT
 10 July 1975

PUBLICATION NUMBER
 TM11-5840-340-20P

PUBLICATION DATE
 23 JAN 78

PUBLICATION TITLE
 RADAR SET AN/PRC-76

PAGE NO	PARA-GRAPH	FIGURE NO	TABLE NO
33			
44		19	
45			

IN THIS SPACE TELL WHAT IS WRONG AND WHAT SHOULD BE DONE ABOUT IT:

For item 2, change the NSN to read: 5835-00-134-9186.
Reason: Accuracy.

Identify the cover on the junction box (item no. 5).
Reason: It is a separate item and is not called out on figure 19.

Add the cover of the junction box as an item in the listing for figure 19
Reason: Same as above

SAMPLE

\$

PRINTED NAME GRADE OR TITLE AND TELEPHONE NUMBER
 SSG I. M. DeSpirit of 999-1776

SIGN HERE

TEAR ALONG PERFORATED LINE

FILL IN YOUR
UNIT'S ADDRESS

FOLD BACK

DEPARTMENT OF THE ARMY

OFFICIAL BUSINESS



SAMPLE

Commander
US Army Communications-Electronics Command
and Fort Monmouth
ATTN: AMSEL-LC-ME-PS
Fort Monmouth, New Jersey 07703-5000

TEAR ALONG PERFORATED LINE

RECOMMENDED CHANGES TO EQUIPMENT TECHNICAL PUBLICATIONS



SOMETHING WRONG

WITH THIS PUBLICATION?

THEN.. JOT DOWN THE DOPE ABOUT IT ON THIS FORM. CA REFULLY TEAR IT OUT. FOLD IT AND DROP IT IN THE MAIL.

FROM; (PRINT YOUR UNIT'S COMPLETE ADDRESS

DATE SENT _____

PUBLICATION NUMBER

PUBLICATION DATE

PUBLICATION TITLE

TN 11-5820-667-34P

| 15 August 1989 | Radio Set AN/PRC-77

BE EXA	PIN	JINT WH	E IT IS
PAGE NO	PARA GRAPH	FIGURf NO	TABLE No

IN THIS SPACE TELL WHAT IS WRONG AND WHAT SHOULD BE DONE ASOUT IT:

TEAR ALONG PERFORATED LINE

PRINTED NAME GRADE OR TITLE AND TELEPHONE NUMBER T

SIGN HERE

DA FORM 2028-2
1 JUL 79

PREVIOUS EDITIONS ARE OBSOLETE

P. S... IF YOUR OUTFIT WANTS TO KNOW ABOUT YOUR RECOMMENDATION MAKE A CARBON COPY OF THIS AND GIVE IT TO YOUR HEADQUARTERS

REVERSE OF DA FORM 2028-2

FILL IN YOUR
UNIT'S ADDRESS

FOLD OVER

DEPARTMENT OF THE ARMY

OFFICIAL • USE ONLY

*
U S MAIL

Commander
US Army Communications-Electronics Command
and Fort Monmouth
AITN: AMSEL-LC-ME-PS
Fort Monmouth, New Jersey 077035000

0
W

=
Z
:
2
0

5

1 -

RECOMMENDED CHANGES TO EQUIPMENT TECHNICAL PUBLICATIONS



SOMETHING WRONG WITH THIS PUBLICATION?

THEN ... JOT DOWN THE DOPE A BOUT IT ON THIS FORM. CAREFULLY! TEAR IT OUT, FOLD IT AND DROP IT IN THE MAIL.

FROM PRINT YOUR UNIT'S COMPLETE ADDRESS)

DATE SENT

PUBLICATION NUMBER

PUBLICATION DATE

PUBLICATION TITLE

TM 11-5820-667-34P

115 August 1989

Radio Set AN/ PRC-77

BE EXACT PIN-POINT WHERE IT IS

PAGE NO

PARA GRAPH

IN THIS SPACE TELL WHAT IS WRONG AND WHAT SHOULD BE DONE ABOUT IT:

TEAR ALONG PERFORATED LINE

PRINTED NAME GRADE OR TITLE AND TELEPHONE NUMBER

SIGN HERE

1

FILL IN YOUR
UNIT'S ADDRESS

FOLO BACK

DEPARTMENT OF THE ARMY

OF FICI A L • USIN ESS

*
0 U.S. MAIL

commander
US Army Communications-Electronics Command
and Fort Monmouth
ATTN: AMSEL-LC-ME-PS
Fort Monmouth, New Jersey 077035000

0
=
m
s
:
=
g
●
0
E

RECOMMENDED CHANGES TO EQUIPMENT TECHNICAL PUBLICATIONS



THEN.. JOT DOWN THE DOPE ABOUT IT ON THIS FORM. CAREFULLY TEAR IT OUT, FOLD IT AND DROP IT IN THE MAIL.

SOMETHING WRONG WITH THIS PUBLICATION?

FROM. (PRINT YOUR UNIT'S COMPLETE ADDRESS)

DATE SENT

PUBLICATION NUMBER

TM 11-5820-667-34P

PUBLICATION DATE

15 August 1989

PUBLICATION TITLE

Radio Set AN/ PRC-77

BE EXACT PIN-POINT WHERE IT IS

PAGE NO	PARA GRAPH	FIGURE NO	TABLE NO
---------	------------	-----------	----------

IN THIS SPACE TELL WHAT IS WRONG AND WHAT SHOULD BE DONE ABOUT IT:

TEAR ALONG PERFORATED LINE

PRINTED NAME GRADE TITLE AND TELEPHONE NUMBER

SIGN HERE

1

DA FORM 2028-2 JUL 79

PREVIOUS EDITIONS ARE OBSOLETE

P.S...IF YOUR OUTFIT WANTS TO KNOW ABOUT YOUR RECOMMENDATION MAKE A CARBON COPY OF THIS AND GIVE IT TO YOUR HEADQUARTERS.

FILL IN YOUR
UNIT'S ADDRESS

FOLD BACK

DEPARTMENT OF THE ARMY

OFFICIAL USE



TEAR ALONG PERFORATED LINE

commander
US Army Communications-Electronics Command
and Fort Monmouth
ATTN: AMSEL-I.C-ME-I'S
Fort Monmouth, New Jersey 07703-5000

)
)

By Order of the Secretaries of the Army, the Navy and the Air Force:

Official:

CARL E. VUONO
General, United States Army
Chief of Staff

WILLIAM J. MEEHAN II
Brigadier General, United States Army
The Adjutant General

H. E. REESE
Executive Director
Marine Corps Research
Development and Acquisition Command

WILLIAM CHIAIESE
Vice Admiral, United States Navy
Commander, Space and Naval Warfare
Systems Command

Official:

WILLIAM O. NATIONS
Colonel, USAF
Director of Information
Management and Administration

LARRY D. WELSH
General, USAF
Chief of Staff

DISTRIBUTION:

To be distributed in accordance with DA Form 12-51 DS/GS requirements
for AN/ PRC-77.

*U.S. GOVERNMENT PRINTING OFFICE: 19SS-612-WW0585



