

WJ DMS-105A Input Filter Assembly (A19)

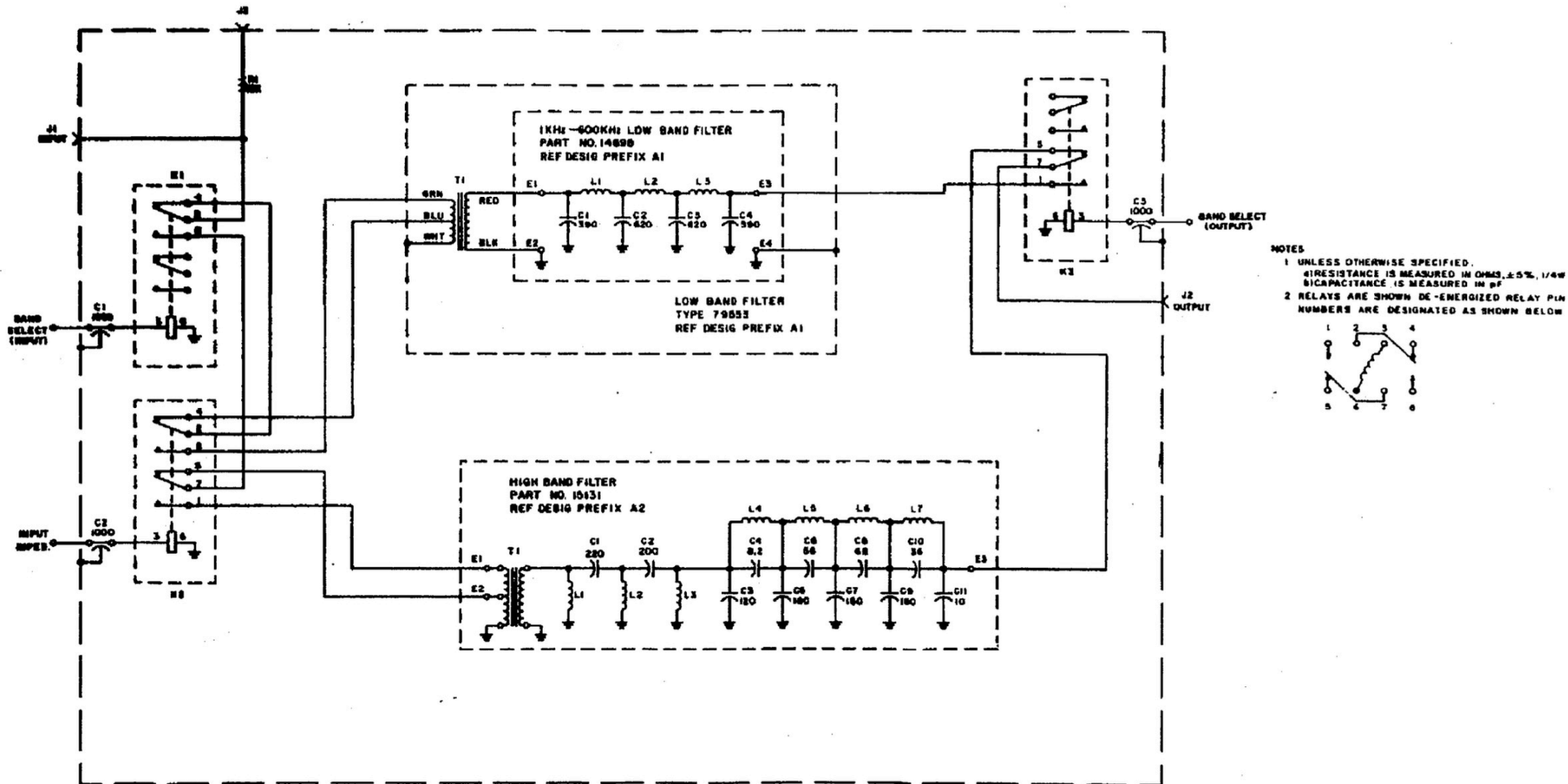
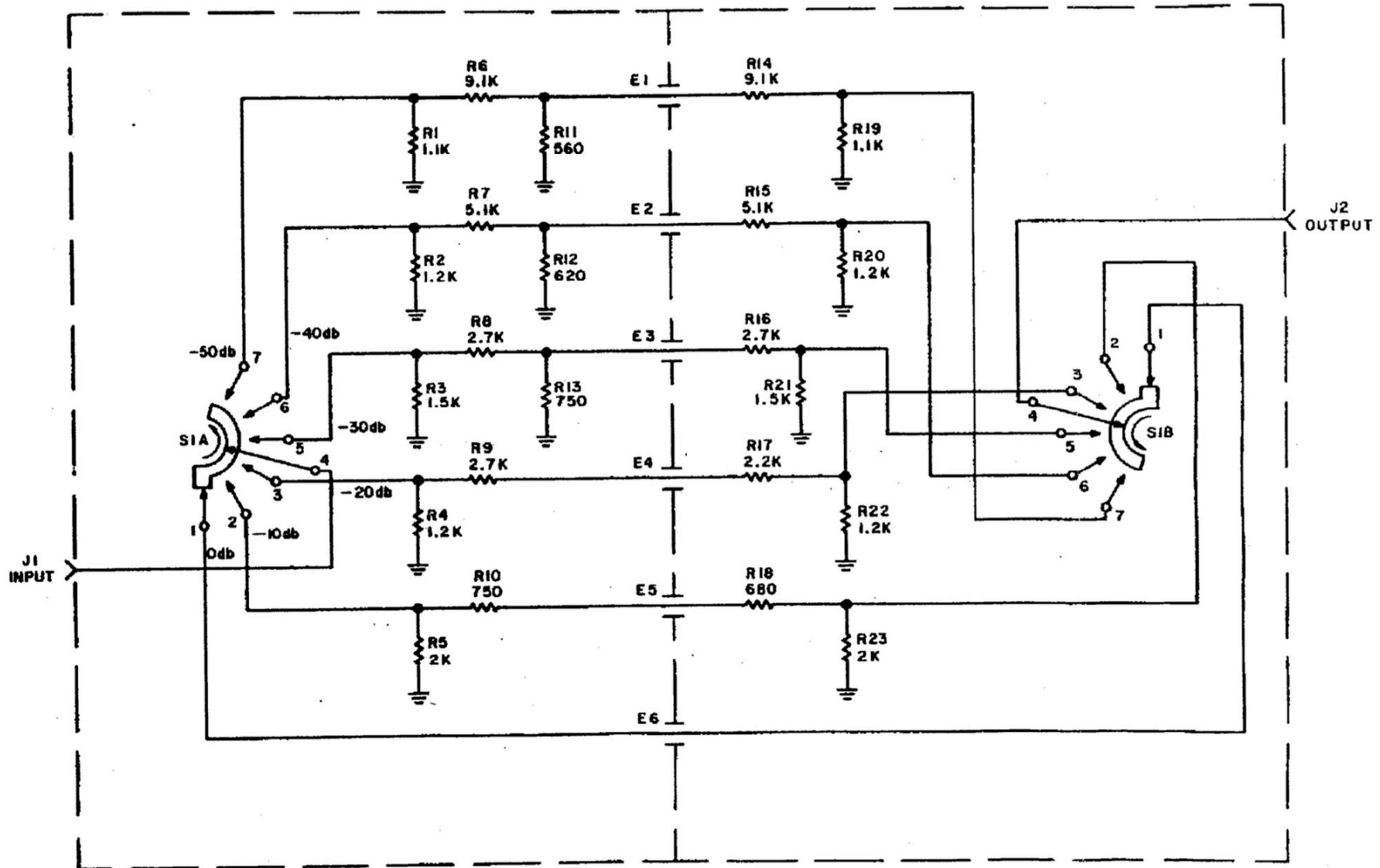


Figure 6-19. Type 79531 Input Filter Assembly (A19), Schematic Diagram

WJ DMS-105A Input Attenuator (A20)

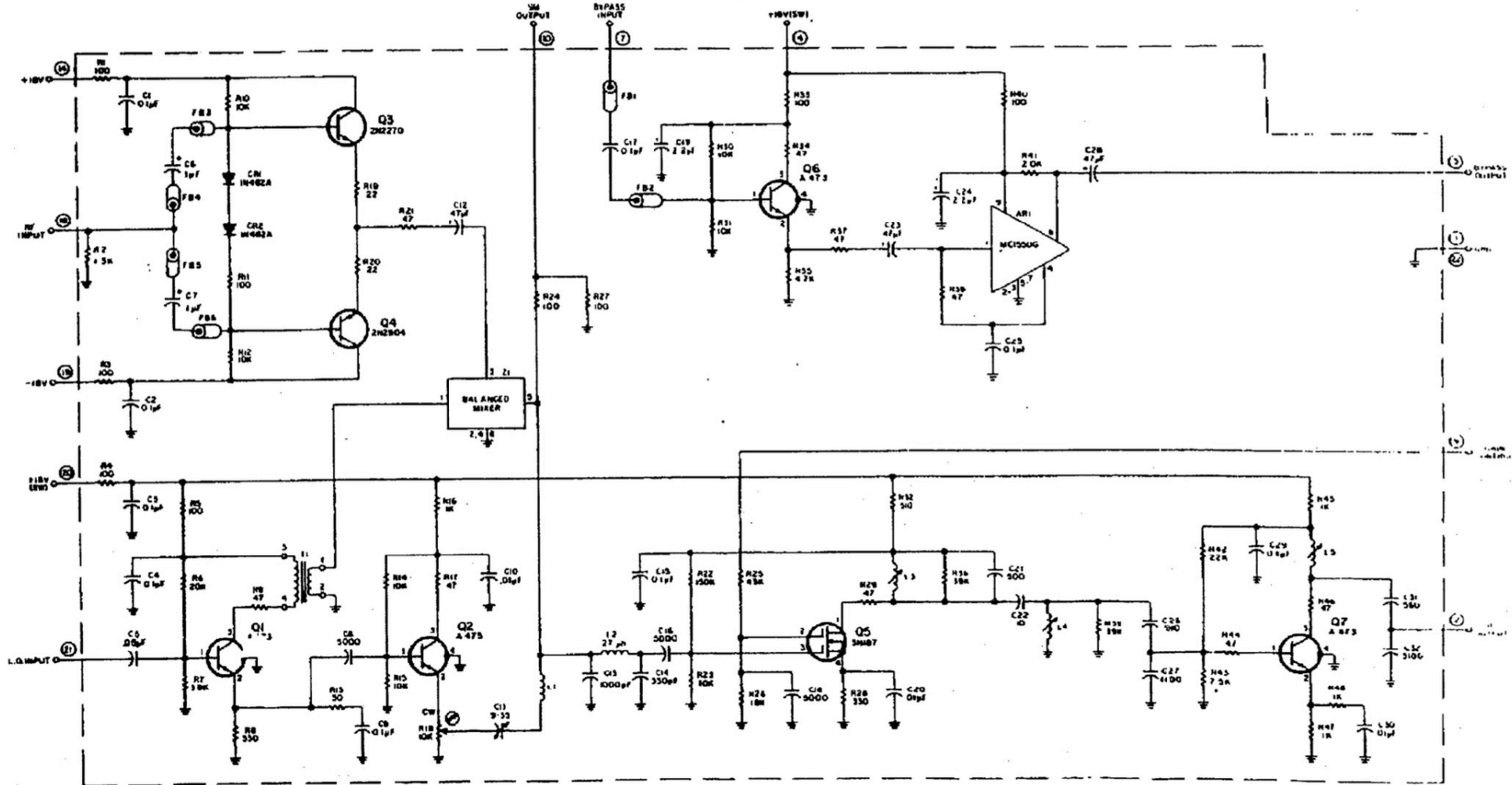


NOTES

1. UNLESS OTHERWISE SPECIFIED:
a) RESISTANCE IS MEASURED IN OHMS, $\pm 5\%$, 1/4W
2. SWITCH S1 IS SHOWN IN EXTREME CCW POSITION AND IS VIEWED FROM END OPPOSITE CONTROL KNOB. SECTION A IS NEAREST CONTROL KNOB. ARROW INDICATES CW ROTATION OF CONTROL KNOB.

Figure 6-20. Type 79382 Input Attenuator (A20), Schematic Diagram

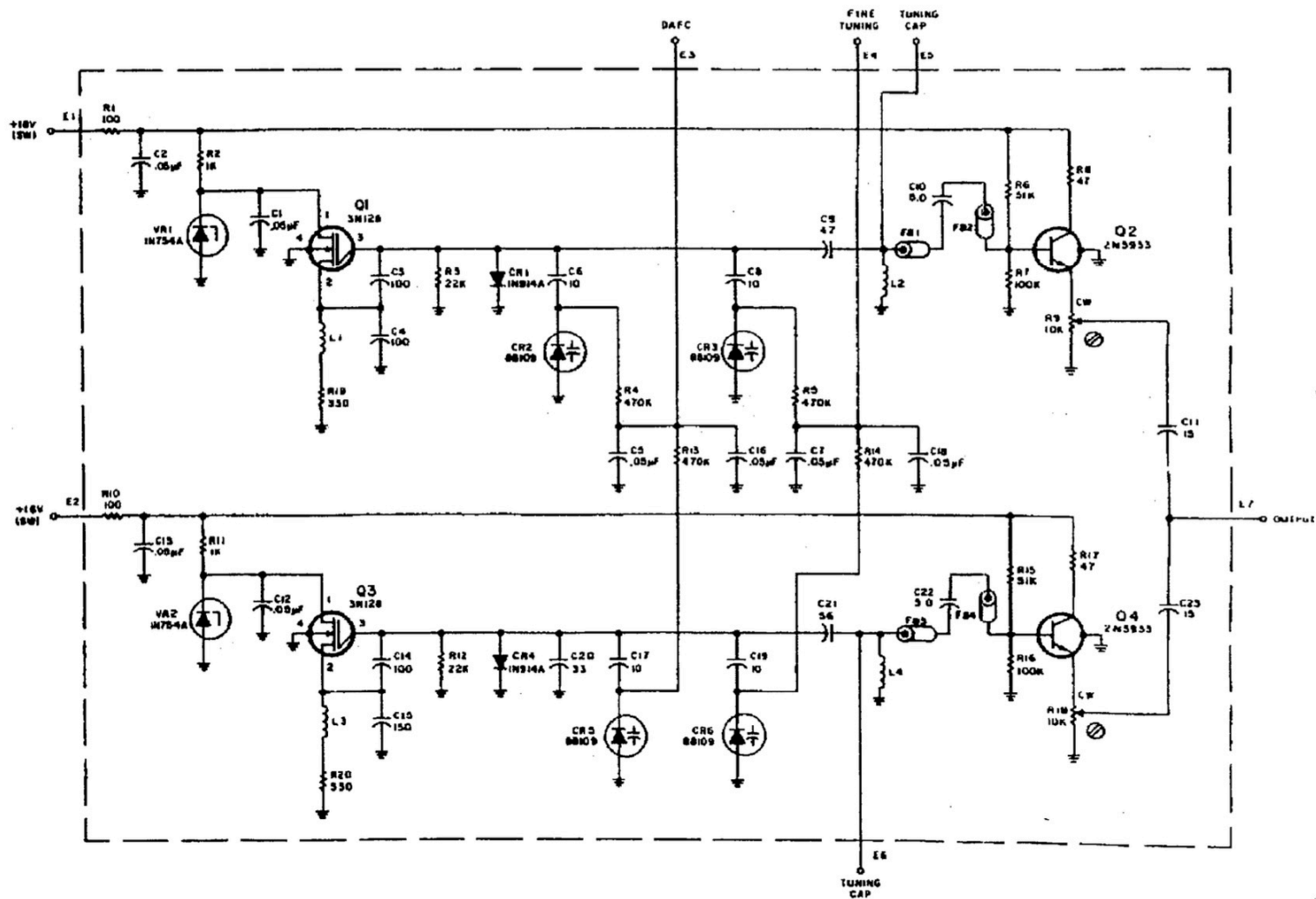
WJ DMS-105A Mixer Board (A2)



NOTES
 1. UNLESS OTHERWISE SPECIFIED.
 a) RESISTANCE IS MEASURED IN OHMS, Ω , $k\Omega$, $M\Omega$
 b) CAPACITANCE IS MEASURED IN μ F.

Figure 6-2. Type 79522 Mixer board (A2) Schematic Diagram

WJ DMS-105A Local Oscillator (A18)

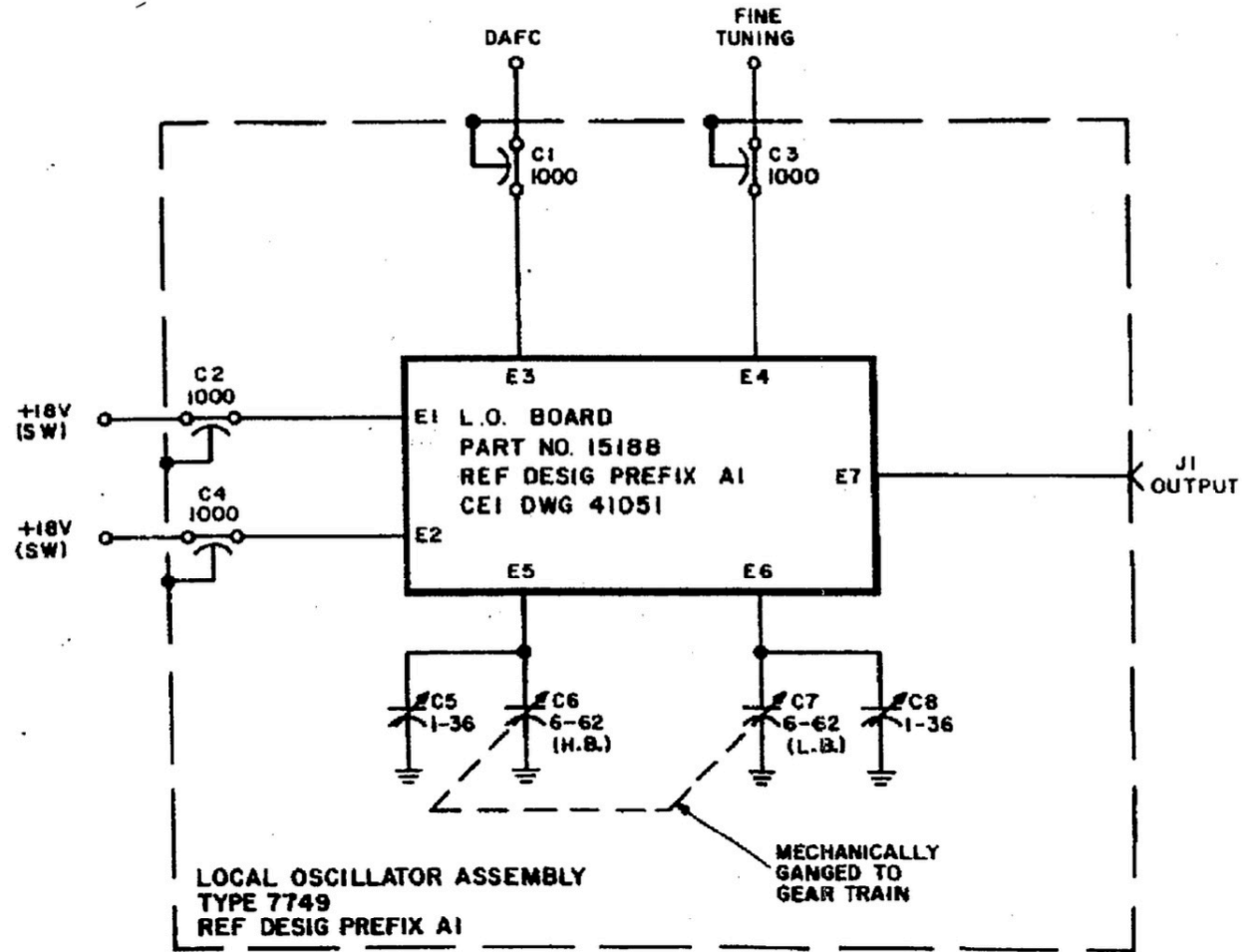


NOTES

- 1 UNLESS OTHERWISE SPECIFIED
 a) RESISTANCE IS MEASURED IN OHMS, 1% 1/4W
 b) CAPACITANCE IS MEASURED IN pF
- 2 FOLLOWING NOTATIONS ARE USED ON POTENTIOMETERS
 CW INDICATES CLOCKWISE ROTATION
 Ⓢ INDICATES SCREWDRIVER ADJUSTMENT

Figure 6-18. Part 15188 Local Oscillator Board (A18A1A1),
Schematic Diagram

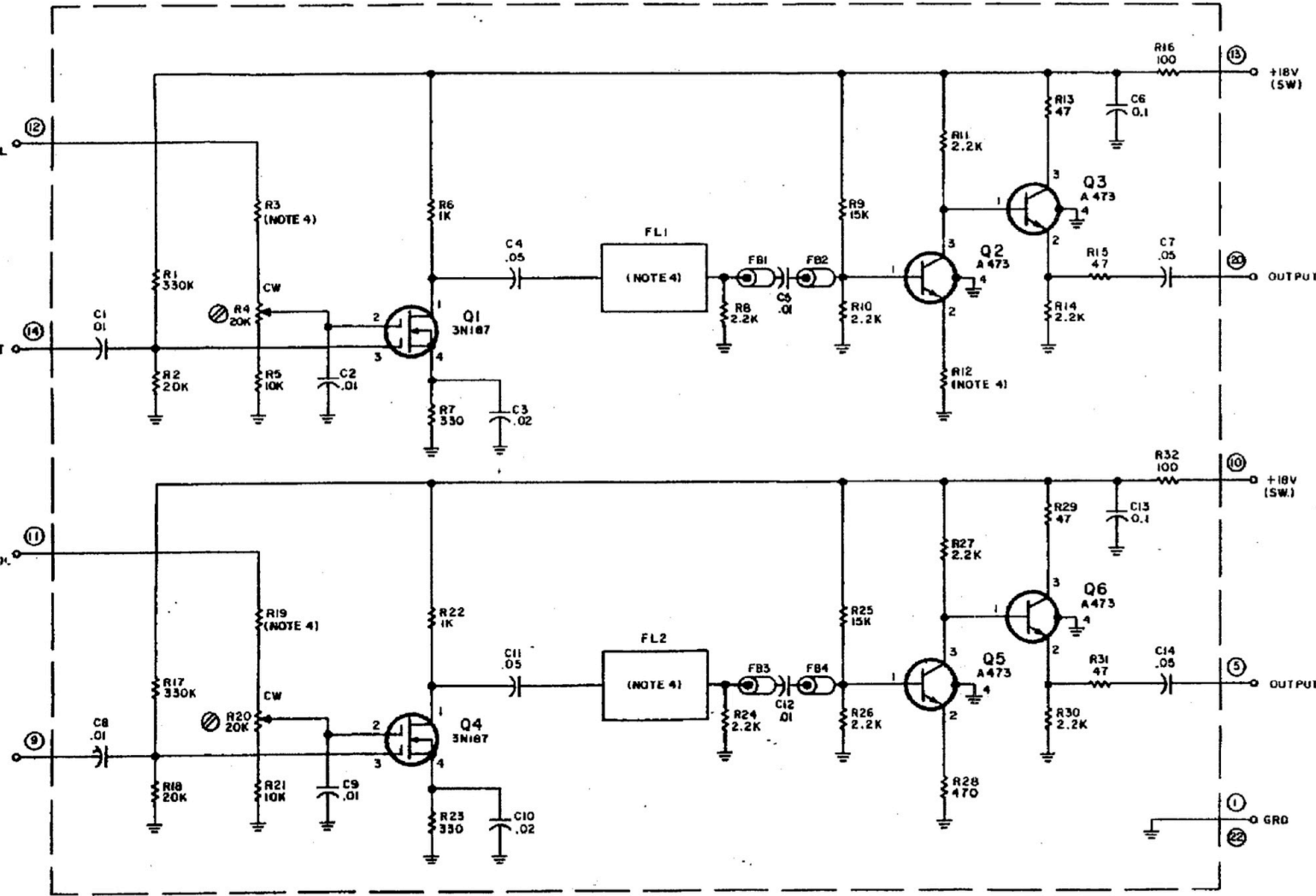
WJ DMS-105A Tuning Assembly (A18)



- NOTES:
1. CAPACITANCE IS MEASURED IN pF.
 2. TYPE 71233 USES A TYPE 8584 GEAR TRAIN,

Figure 6-17. Type 71233 LO Tuning Assembly (A18), Schematic Diagram

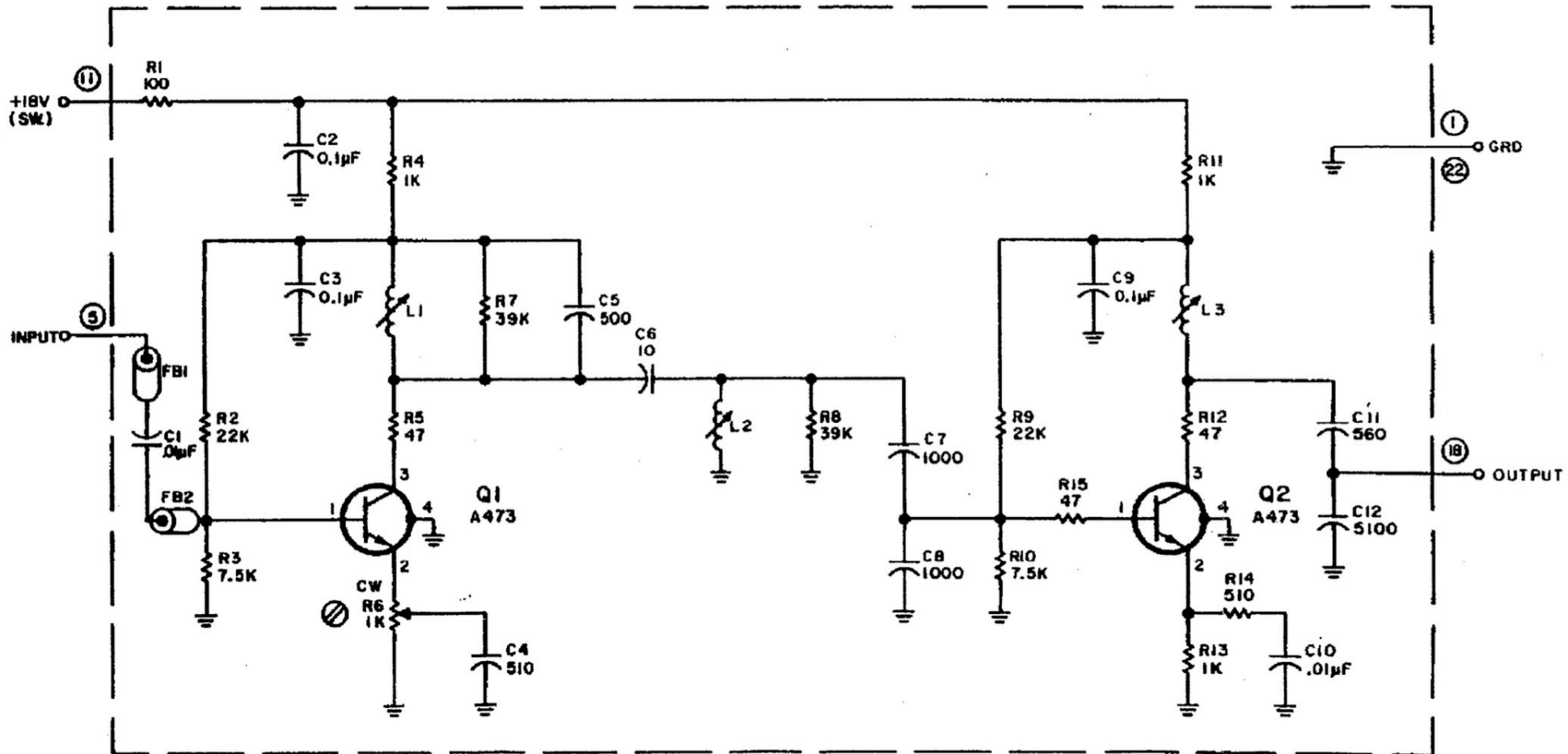
WJ DMS-105A IF Amplifiers (A3, A4, A5 and A6)




- NOTES
- UNLESS OTHERWISE SPECIFIED
 - RESISTANCE IS MEASURED IN OHMS, $\pm 5\%$, 1/4
 - CAPACITANCE IS MEASURED IN μF
 - ENCIRCLED NUMBERS ARE MODULE PIN NUMBERS
 - FOLLOWING NOTATIONS ARE USED ON POTENTIOMETERS
CW INDICATES CLOCKWISE ROTATION
⊗ INDICATES SCREWDRIVER ADJUSTMENT
 - FOR FL1, FL2, R3, R19 & R12 VALUES, SEE CHART BELOW

TYPE NO	FL1	FL2	R3	R19	R12
72255	8kHz PART NO. B197922	16kHz PART NO. B197923	68K	68K	470
72256	5kHz PART NO. B197920	7kHz PART NO. B197921	68K	68K	470
72257	150Hz PART NO. 6093695	1kHz PART NO. 6093694	68K	68K	470
72258	LOWER S B PART NO. B197933	UPPER S B PART NO. B197932	68K	150K	530
72325	150 Hz PART NO. 6093695	500Hz PART NO. 6093715	68K	68K	470
72326	1kHz PART NO. 6093694	3kHz PART NO. 6093693	68K	68K	470
72401	1 kHz PART NO. 6093694	5kHz PART NO. B197920	68K	68K	470

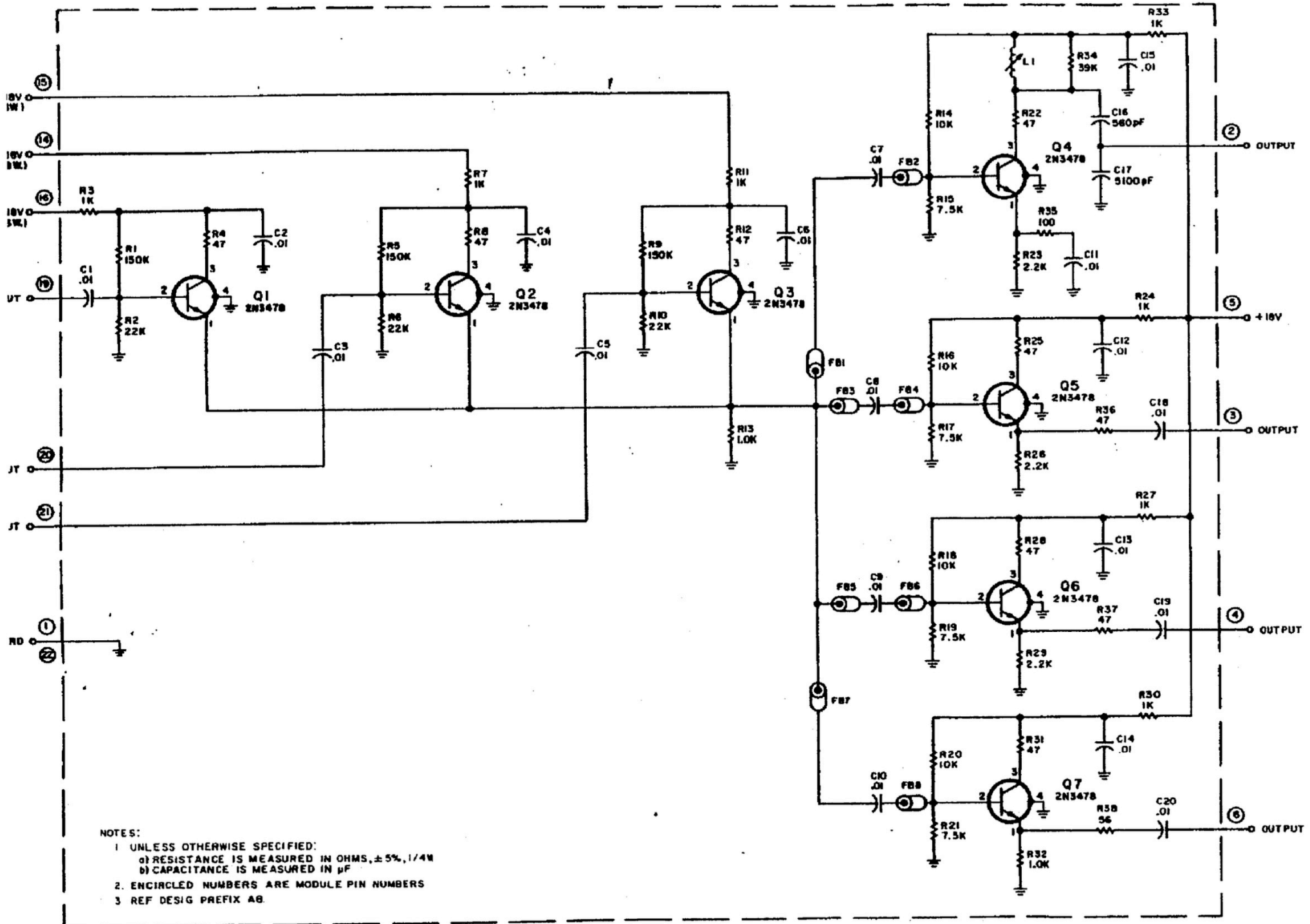
WJ DMS-105A AM/FM/MCW IF Amplifier (A7)



NOTES:

1. UNLESS OTHERWISE SPECIFIED:
 - a) RESISTANCE IS MEASURED IN OHMS, $\pm 5\%$, 1/4W
 - b) CAPACITANCE IS MEASURED IN μF
2. FOLLOWING NOTATIONS ARE USED ON POTENTIOMETERS:
 - CW INDICATES CLOCKWISE ROTATION
 -  INDICATES SCREWDRIVER ADJUSTMENT
3. ENCIRCLED NUMBERS ARE MODULE PIN NUMBERS.

WJ DMS-105A IF Buffer (A8)



WJ DMS-105A IF Translator (15kHz, 50kHz, 100kHz Output) (A9)

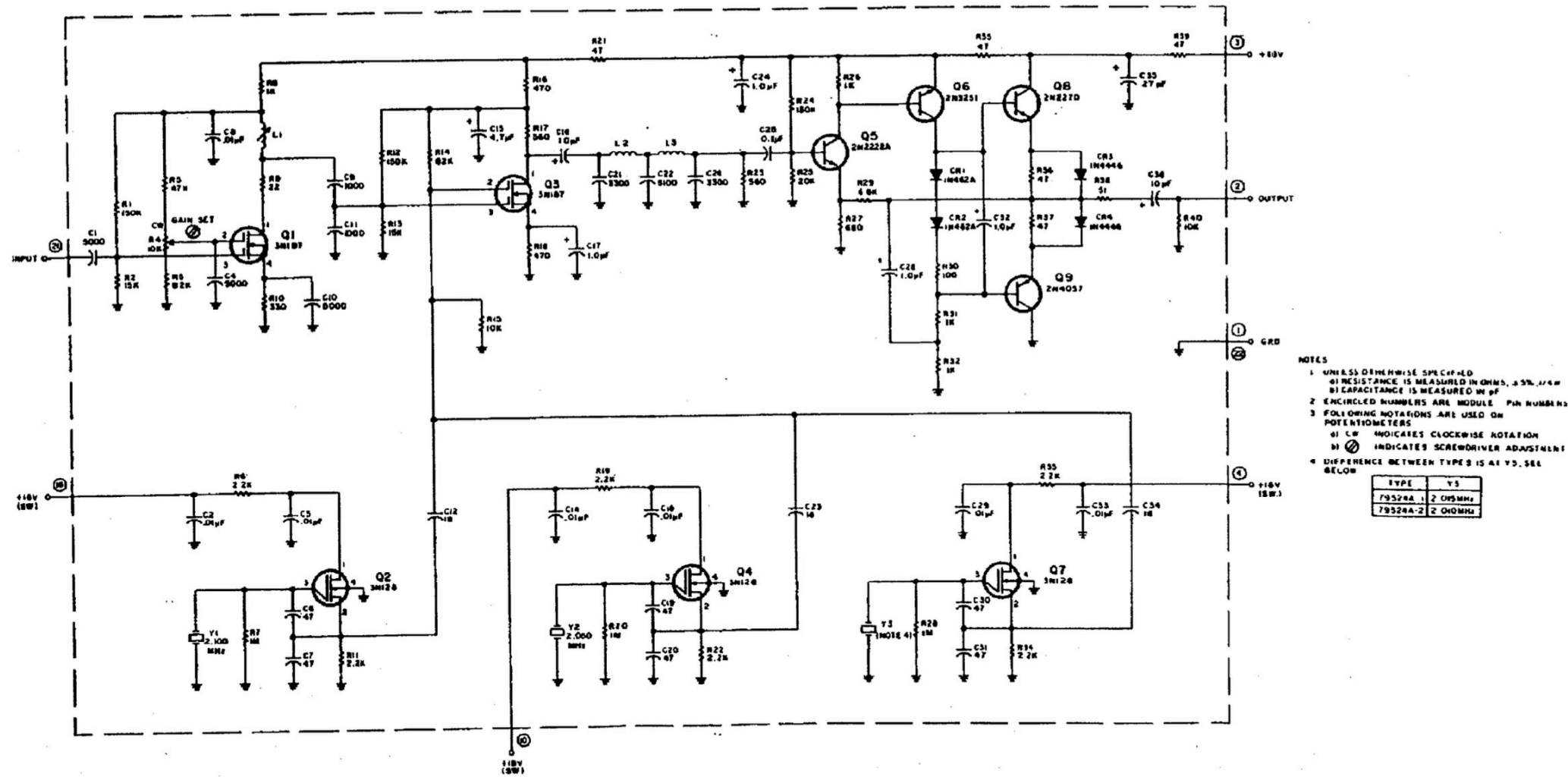
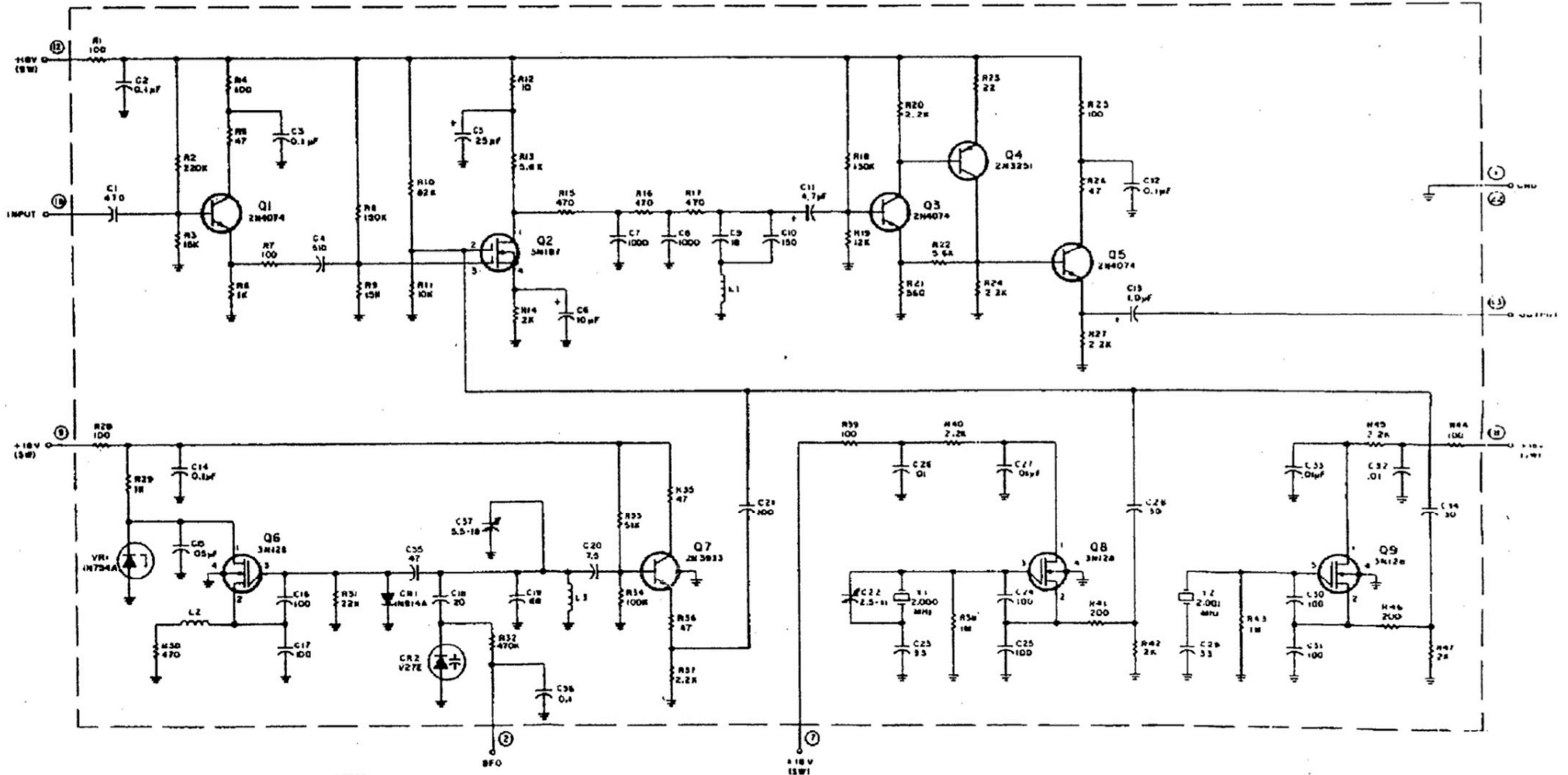


Figure 6-6. Type 7952A IF Translator (A9), Schematic Diagram

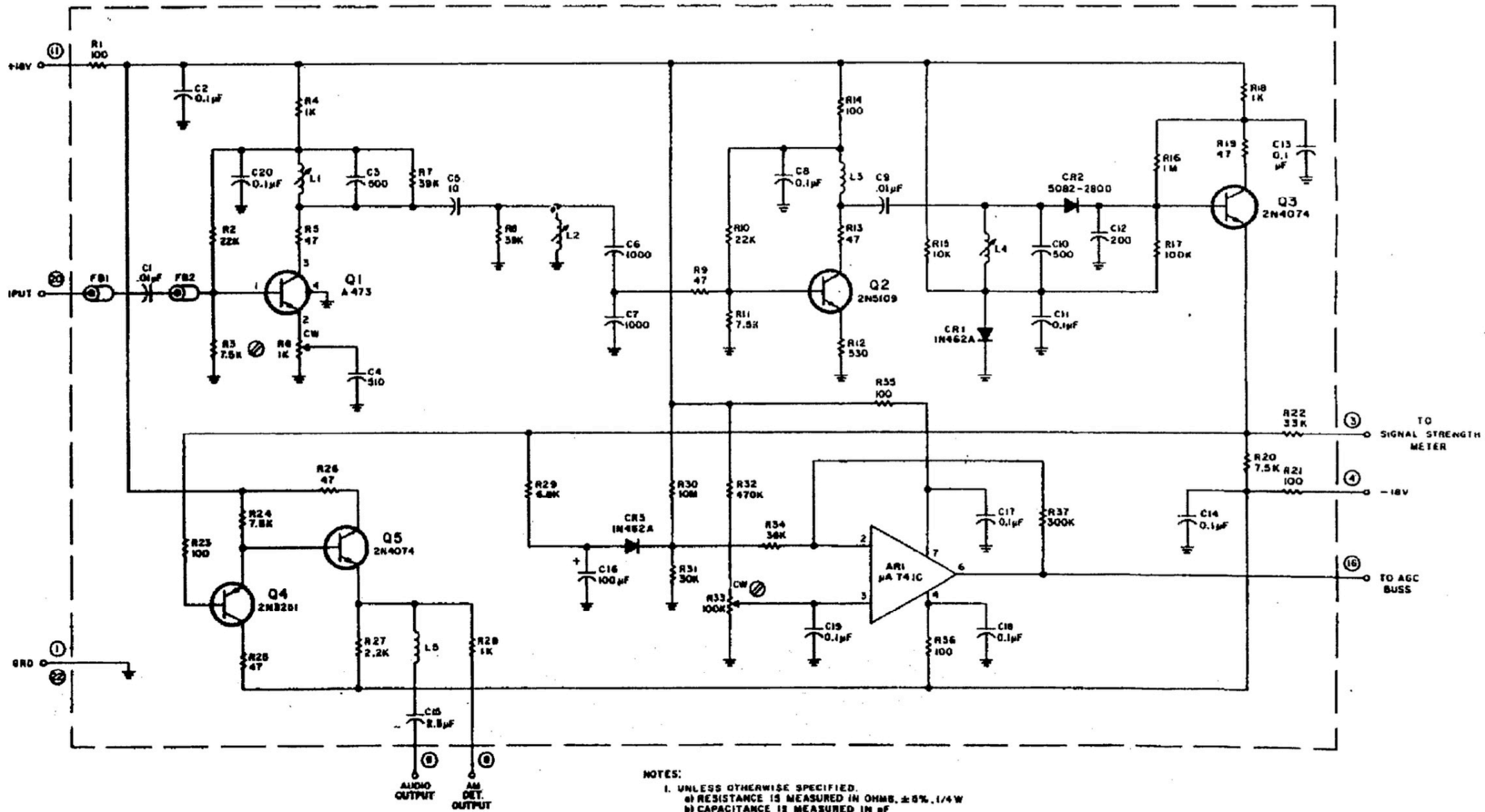
WJ DMS-105A CW/SSB/FSK Demodulator (A10)



NOTES
 1 UNLESS OTHERWISE SPECIFIED
 WIRE RESISTANCE IS MEASURED IN OHMS, ±5%, 1/4W
 CAPACITANCE IS MEASURED IN pF
 2 ENCIRCLED NUMBERS ARE MODULE PIN NUMBERS

Figure 6-7. Type 79525 CW/SSB/FSK Demodulator (A10), Schematic Diagram

WJ DMS-105A LO Isolation Amplifier (A11)

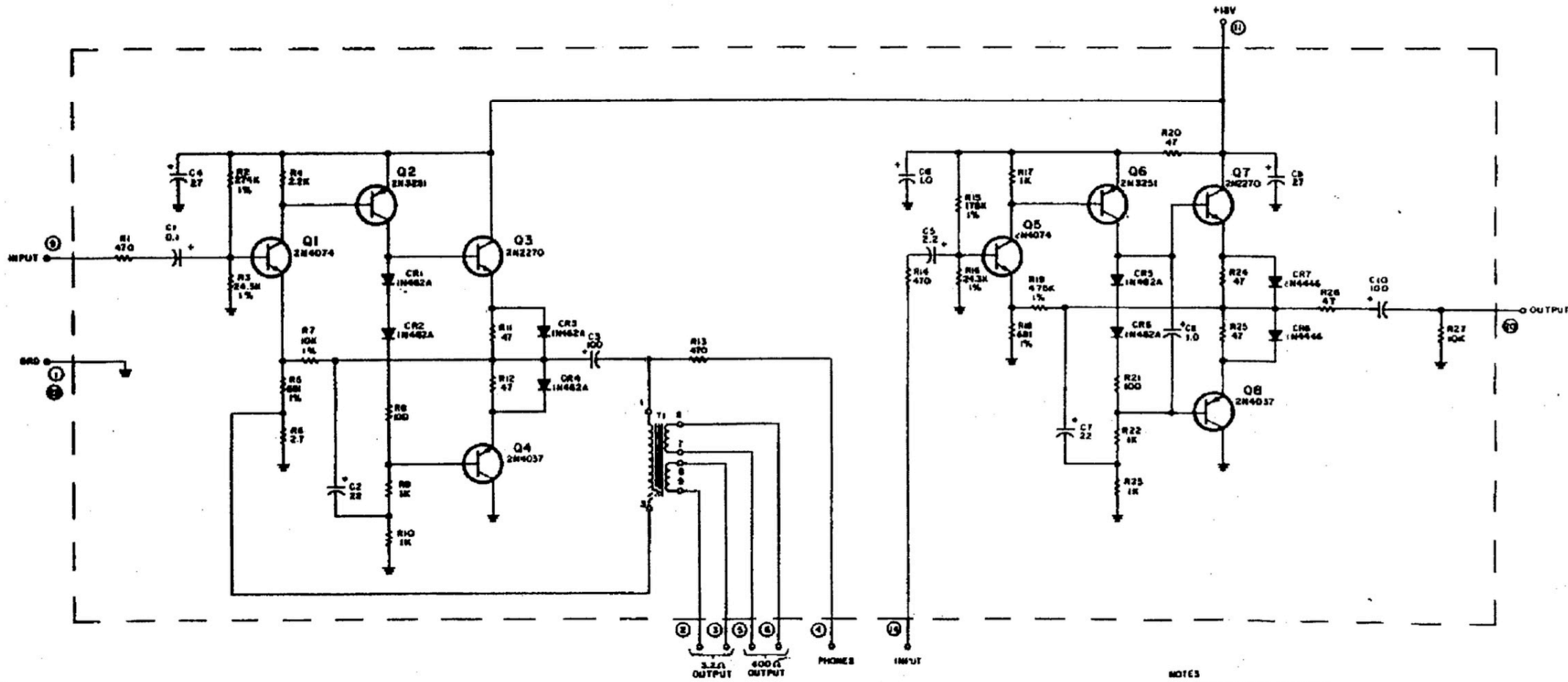


NOTES:

1. UNLESS OTHERWISE SPECIFIED,
 - a) RESISTANCE IS MEASURED IN OHMS, ± 8%, 1/4 W
 - b) CAPACITANCE IS MEASURED IN pF
2. ENCIRCLED NUMBERS ARE MODULE PIN NUMBERS.
3. FOLLOWING NOTATIONS ARE USED ON POTENTIOMETERS.
 - SW INDICATES CLOCKWISE ROTATION
 - ⊗ INDICATES SCREWDRIVER ADJUSTMENT

Figure 6-8. Type 79526 AM/MCW Demodulator/AGC/MGC (A11), Schematic Diagram

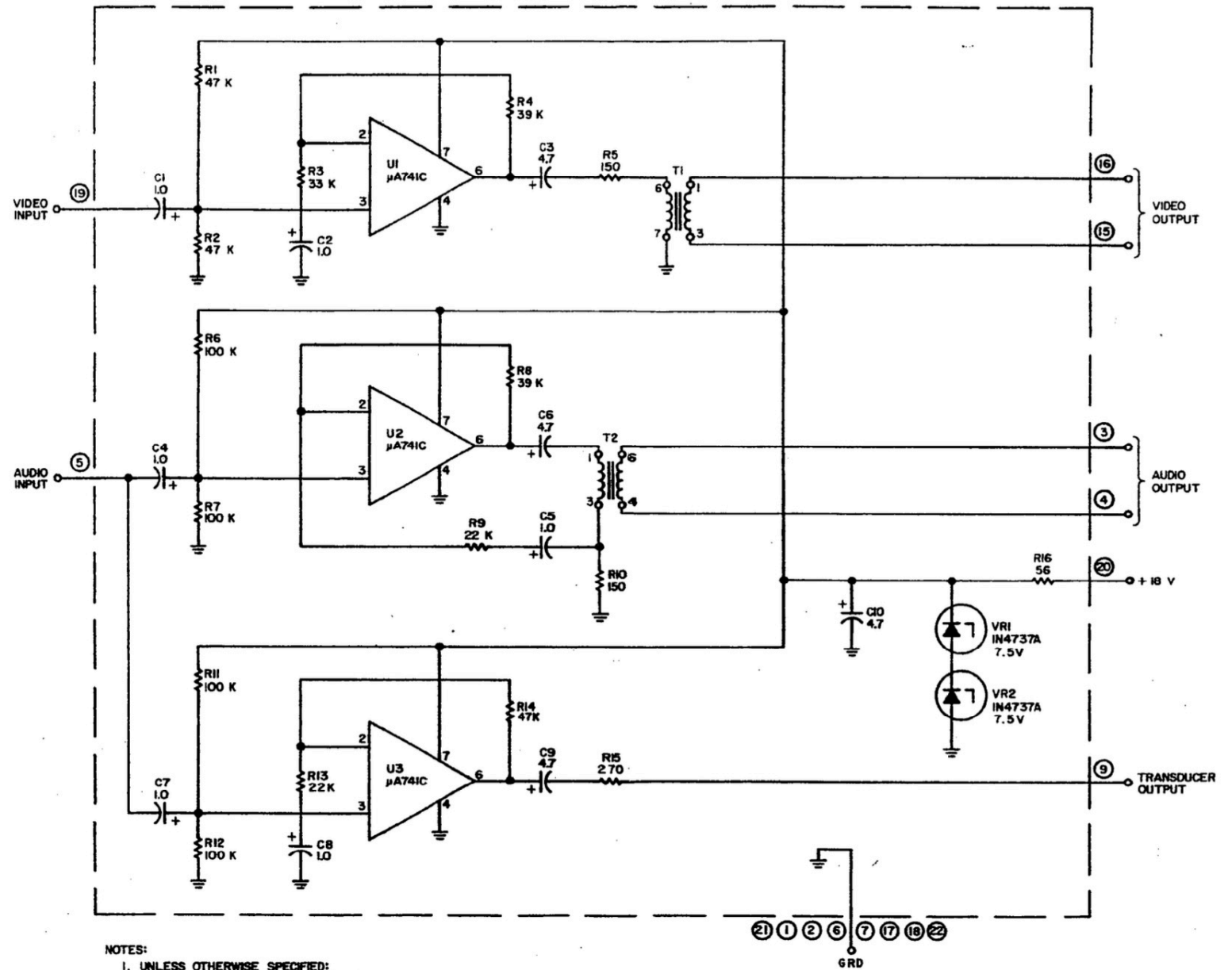
WJ DMS-105A Audio/Video Amplifier (A13)



- NOTES
1. UNLESS OTHERWISE SPECIFIED:
 a. RESISTANCE IS MEASURED IN OHMS, ± 5%, 1/4 W.
 b. CAPACITANCE IS MEASURED IN μF.
 2. ENCIRCLED NUMBERS ARE MODULE PIN NUMBERS.

Figure 6-10. Type 7437 Audio/Video Amplifier (A13), Schematic Diagram

WJ DMS-105A Audio/Video Amplifier, newer version (A13)

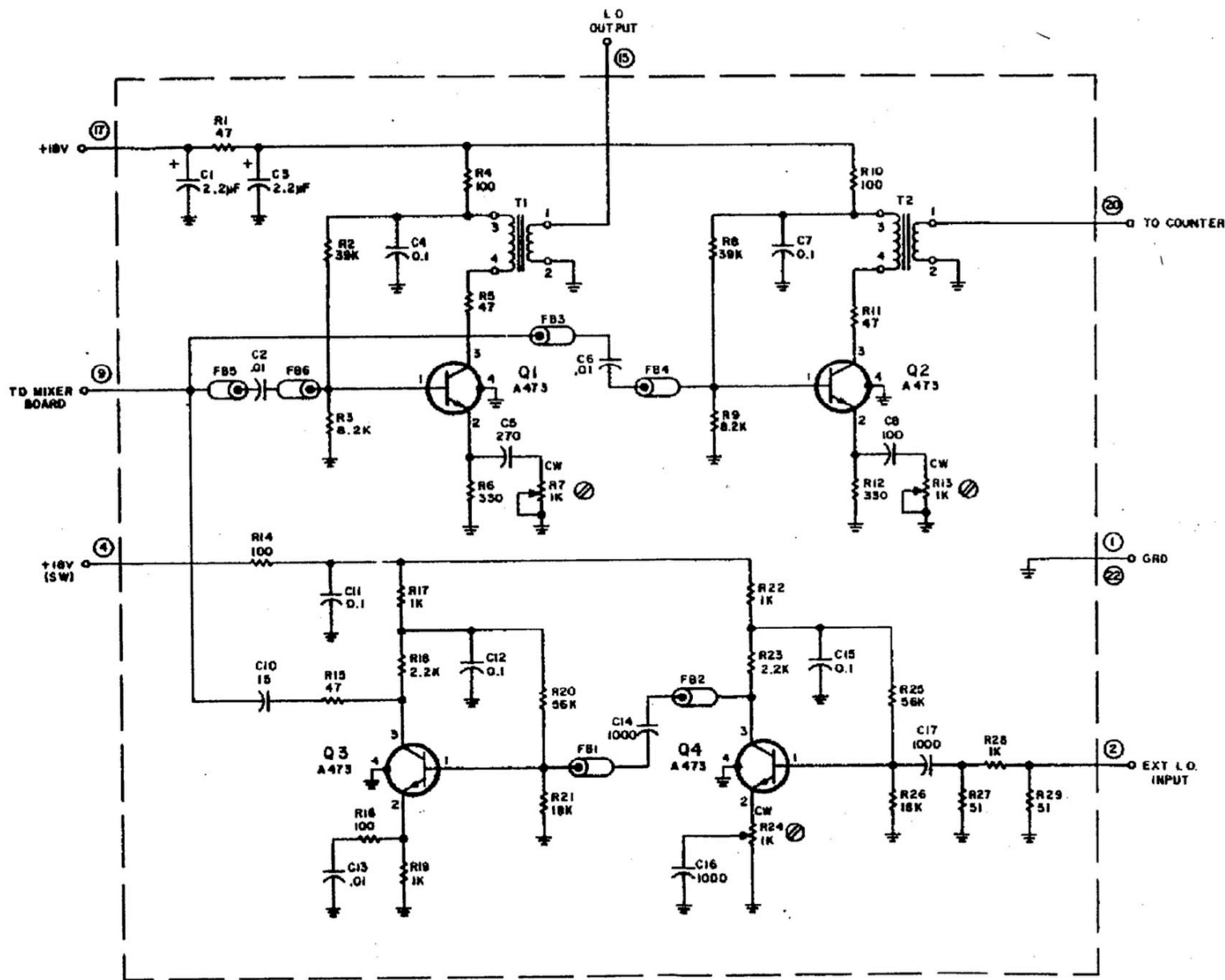


NOTES:

1. UNLESS OTHERWISE SPECIFIED:
 a) RESISTANCE IS IN OHMS, ±5%, 1/4W.
 b) CAPACITANCE IS IN μF.
2. FOR LEAD ARRANGEMENT OF U1, U2 & U3
 SEE DETAIL A.
3. ENCIRCLED NUMBERS ARE MODULE PIN NUMBERS.

Figure 7-13. Type 7451 Audio/Video Amplifier (A13), Schematic Diagram

WJ DMS-105A LO Isolation Amplifier (A1)

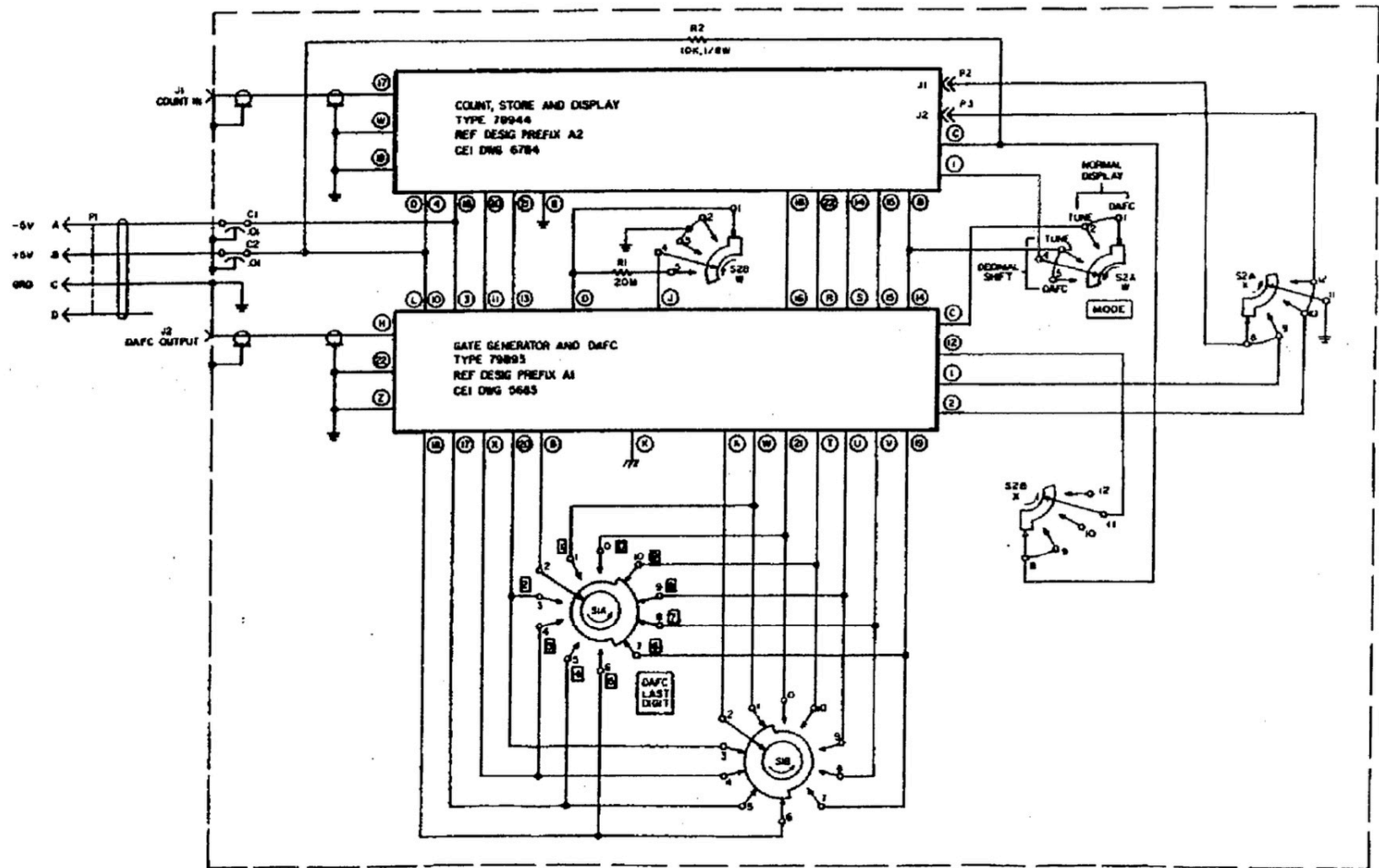


NOTES

- 1 UNLESS OTHERWISE SPECIFIED.
 - a) RESISTANCE IS MEASURED IN OHMS, $\pm 5\%$, 1/4 W
 - b) CAPACITANCE IS MEASURED IN pF
- 2 ENCIRCLED NUMBERS ARE MODULE PIN NUMBERS.
- 3 FOLLOWING NOTATIONS ARE USED ON POTENTIOMETERS
 - CW INDICATES CLOCKWISE ROTATION
 - ⊗ INDICATES SCREWDRIVER ADJUSTMENT

Figure 6-1. Type 79521 LO Isolation Amplifier (A1) Schematic Diagram

WJ DMS-105A IF Counter Assembly (A17)



- NOTES:
1. UNLESS OTHERWISE SPECIFIED:
a) RESISTANCE IS IN OHMS, Ω , IN Ω , IN Ω , IN Ω .
b) CAPACITANCE IS IN μ F.
 2. CIRCLED NUMBERS AND LETTERS ARE MODULE PIN NUMBERS AND LETTERS.
 3. INDICATES FRONT PANEL CONTROL.
 4. SWITCHES S1 AND S2 ARE SHOWN IN EXTREME CCW POSITION AND ARE VIEWED FROM END OPPOSITE CONTROL. EACH SWITCH INDICATES CW ROTATION OF CONTROL KNOB. LETTERS A AND B DENOTE SWITCH SECTIONS. SECTION A IS NEAREST CONTROL KNOB. LETTERS W AND H DENOTE POSITION OF WAFER.
- REF 06346 PRELIM A17...

Figure 6-14. Type 79977 HF Counter Assembly (A17), Schematic Diagram

WJ DMS-105A Counter, Decoder & Display (A17-1)

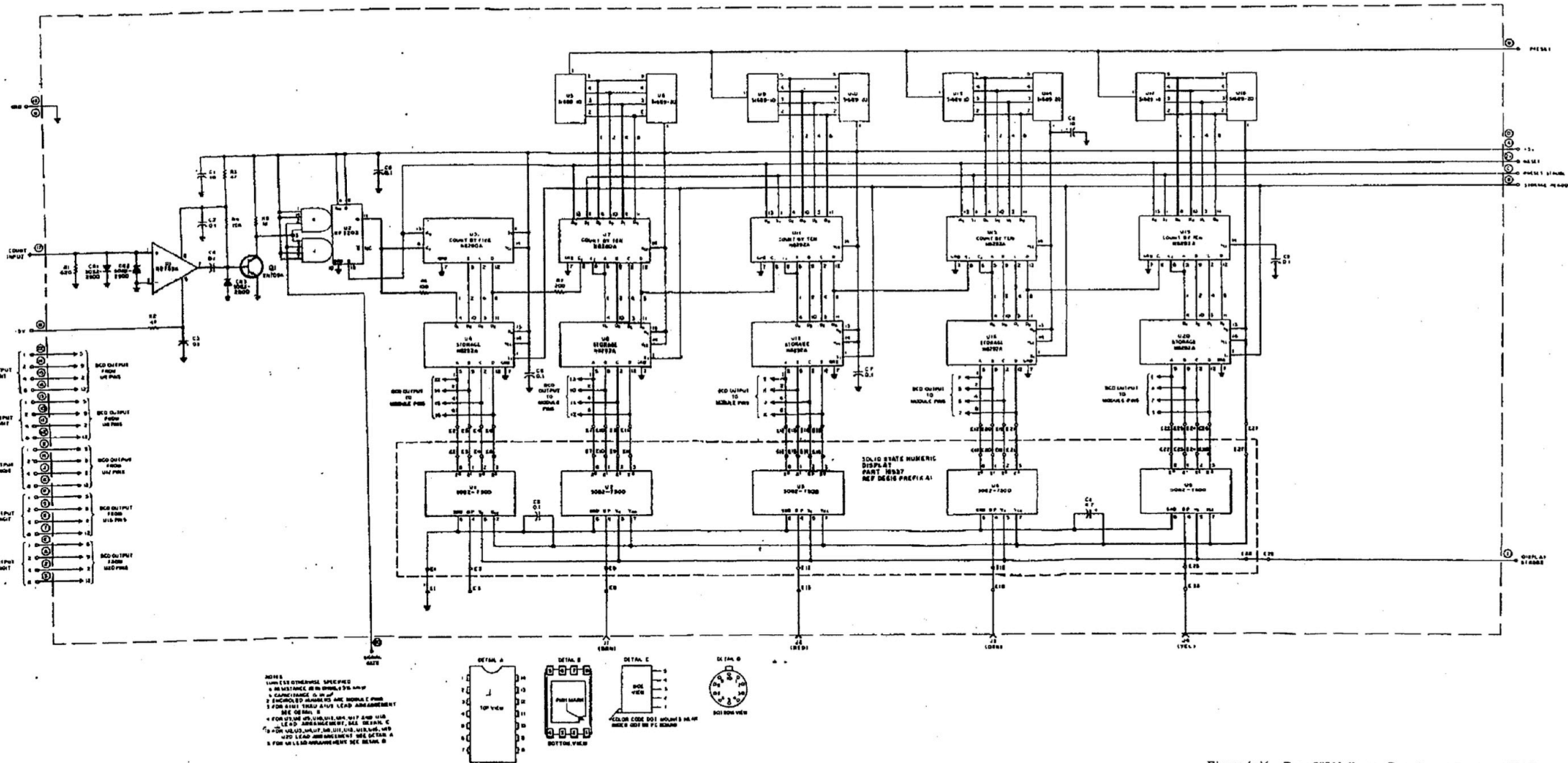
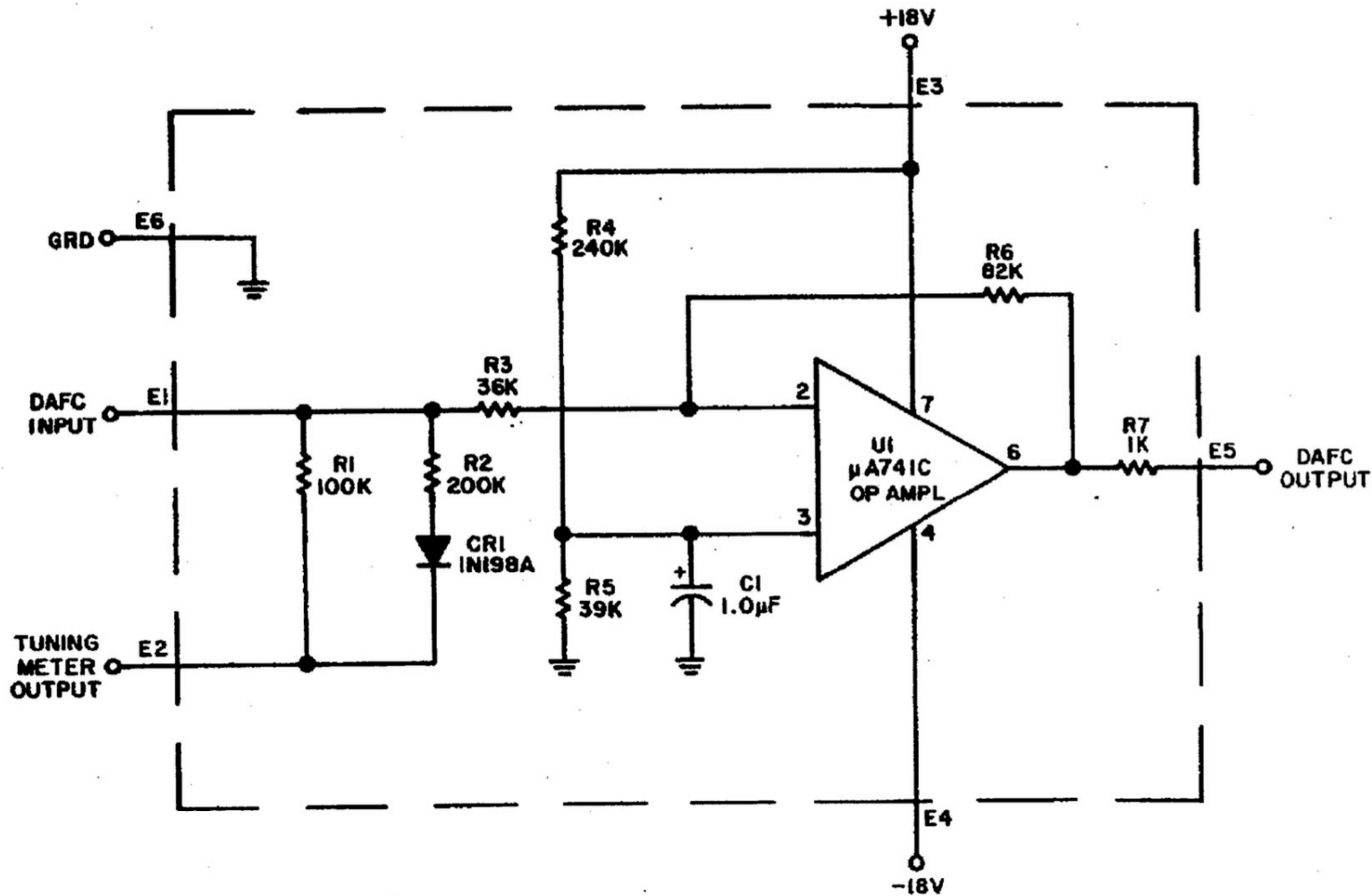


Figure 6-16. Type 79944 Count, Decode and Display (A17A2), Schematic Diagram

WJ DMS-105A AFC Mode Inverter (A21)



- NOTES:
1. UNLESS OTHERWISE SPECIFIED
 - a) RESISTANCE IS MEASURED IN OHMS, $\pm 5\%$, 1/4W.
 - b) CAPACITANCE IS MEASURED IN μF .
 2. PIN ARRANGEMENT FOR UI IS SHOWN IN DETAIL A.

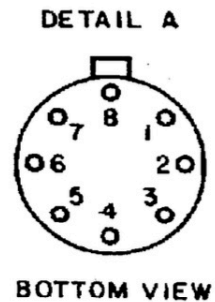
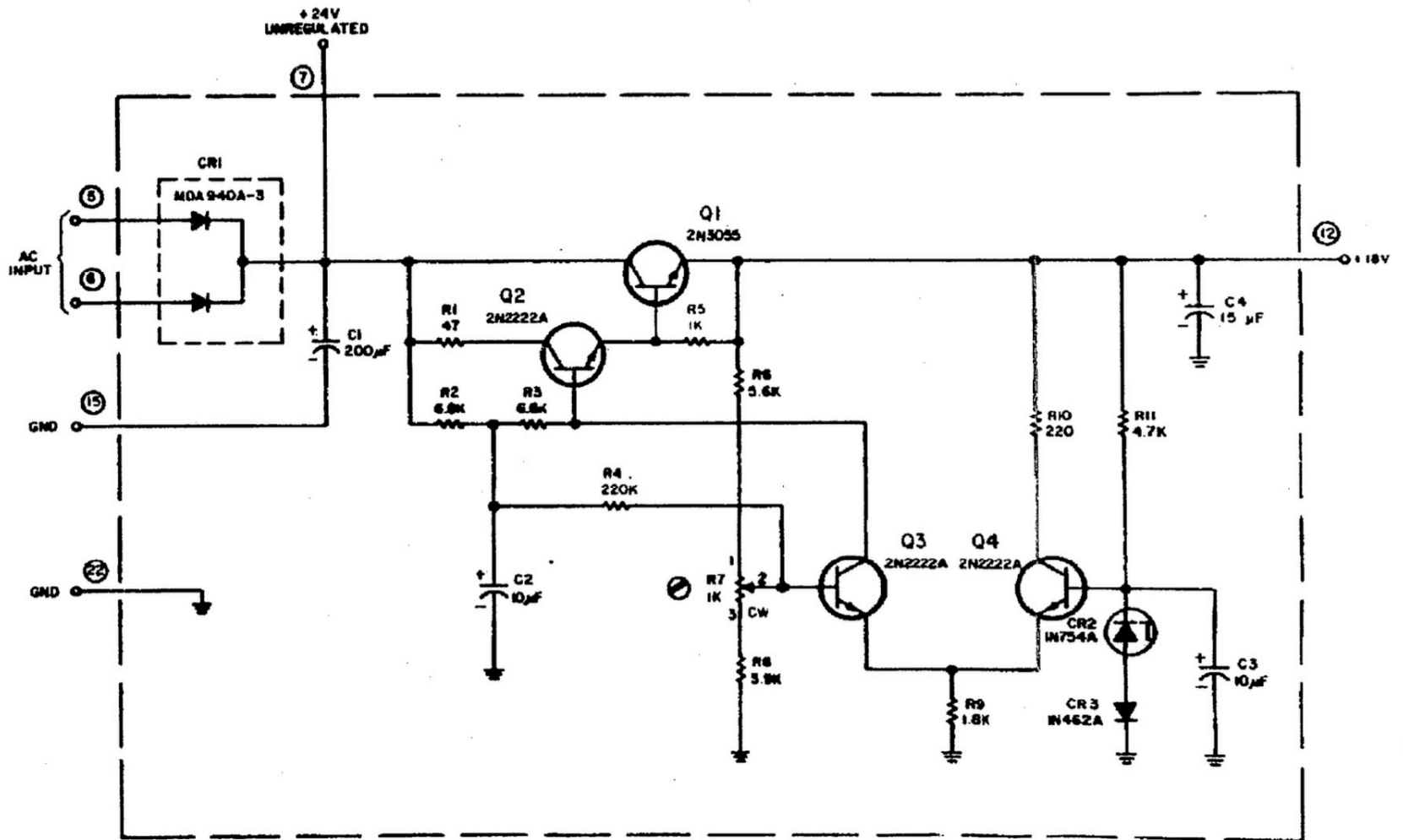


Figure b-21. Part 16070 DAFC Mode Inverter (A21) Schematic Diagram

WJ DMS-105A +18Vdc Power Supply Regulator

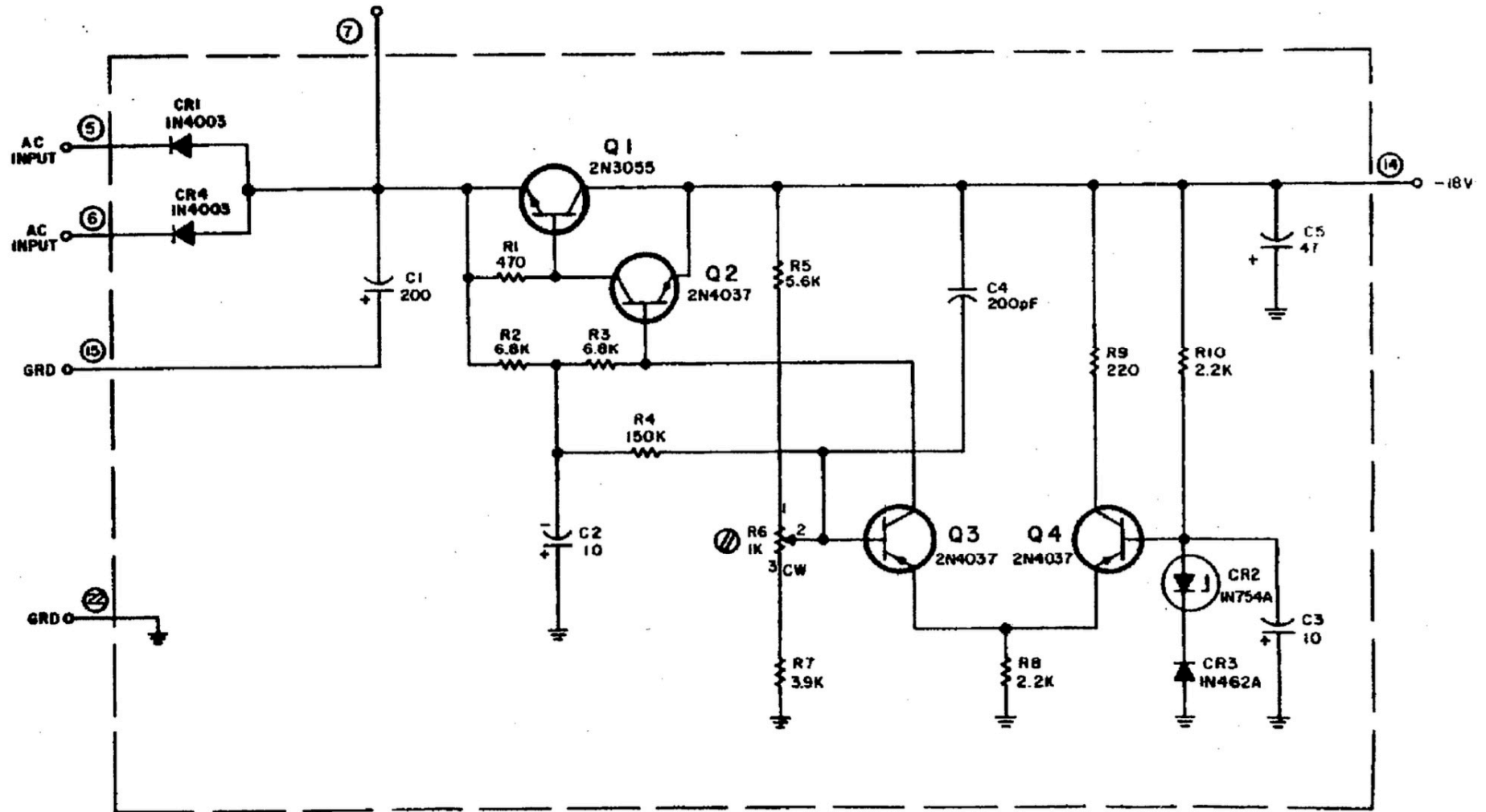


NOTES:

1. UNLESS OTHERWISE SPECIFIED:
RESISTANCE IS MEASURED OHMS, ±5%, 1/4 W
2. ENCIRCLED NUMBERS ARE MODULE PIN NUMBERS
3. THE FOLLOWING NOTATIONS ARE USED ON POTENTIOMETERS
CW INDICATES CLOCKWISE ROTATION
⊖ INDICATES SCREWDRIIVER ADJUSTMENT

Figure 6-12. Type 76162 +18V Power Supply Regulator (A15).
Schematic Diagram

WJ DMS-105A -18Vdc Power Supply Regulator



NOTES:


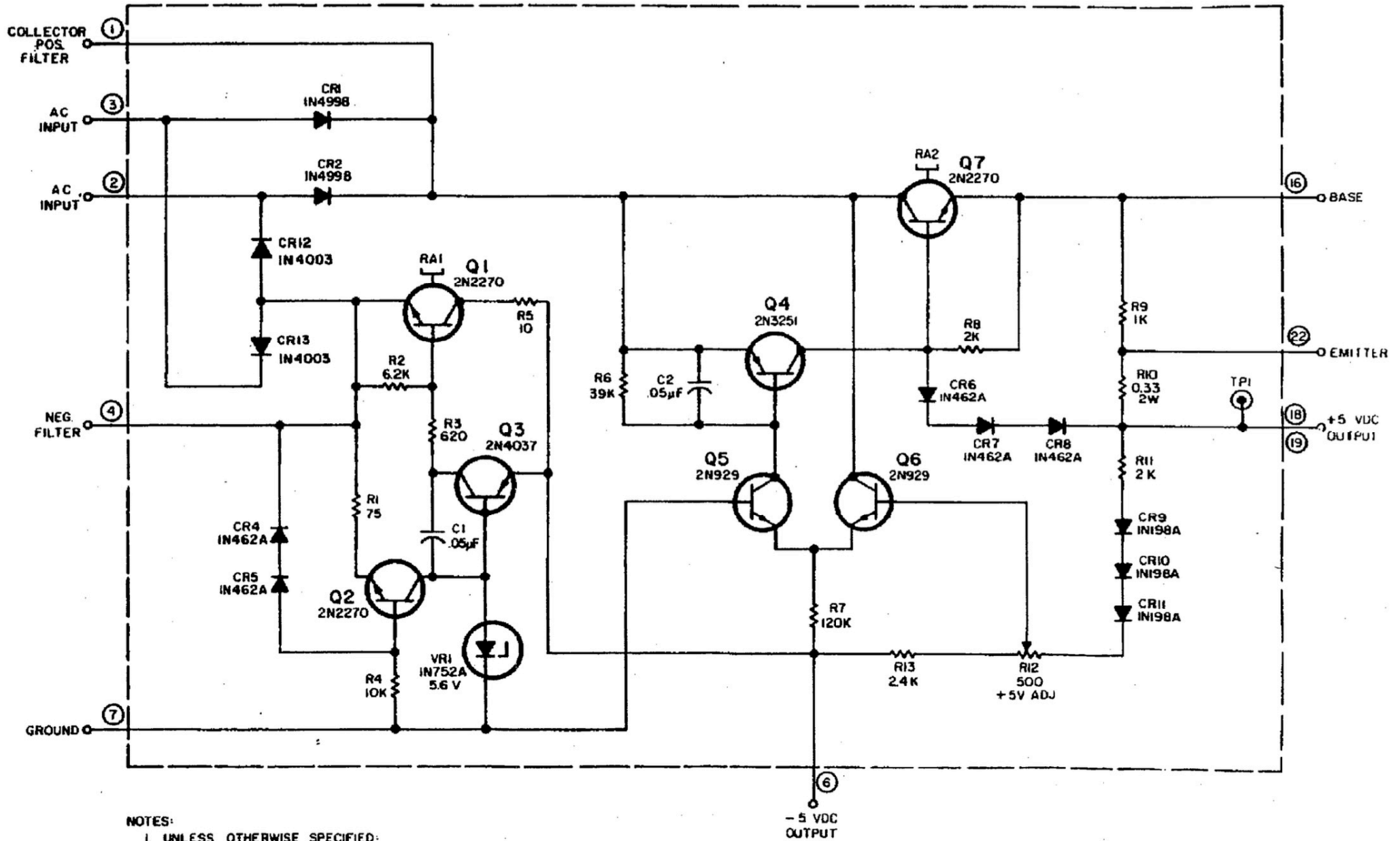
1. UNLESS OTHERWISE SPECIFIED:
 - A. RESISTANCE IS MEASURED IN OHMS, $\pm 5\%$, 1/4W.
 - B. CAPACITANCE IS MEASURED IN μF .
2. THE FOLLOWING NOTATIONS ARE USED ON POTENTIOMETERS:
 - CW INDICATES CLOCKWISE ROTATION
 -  INDICATES SCREWDRIVER ADJUSTMENT.
3. ENCIRCLED NUMBERS ARE MODULE PIN NUMBERS.

Figure 6-11. Type 76160 -18V Power Supply Regulator (A11) Schematic Diagram

WJ DMS-105A +5V / -5V Power Supply Regulator



NOTES:

1. UNLESS OTHERWISE SPECIFIED:
 a. RESISTANCE IS IN OHMS, 1/4 W, 5%.
2. ENCIRCLED NUMBERS ARE MODULE PIN NUMBERS.
3. REF DESIG PREFIX A16.

Figure 6-13. Type 76211 +5V and -5V Power Supply Regulator (A16) Schematic Diagram