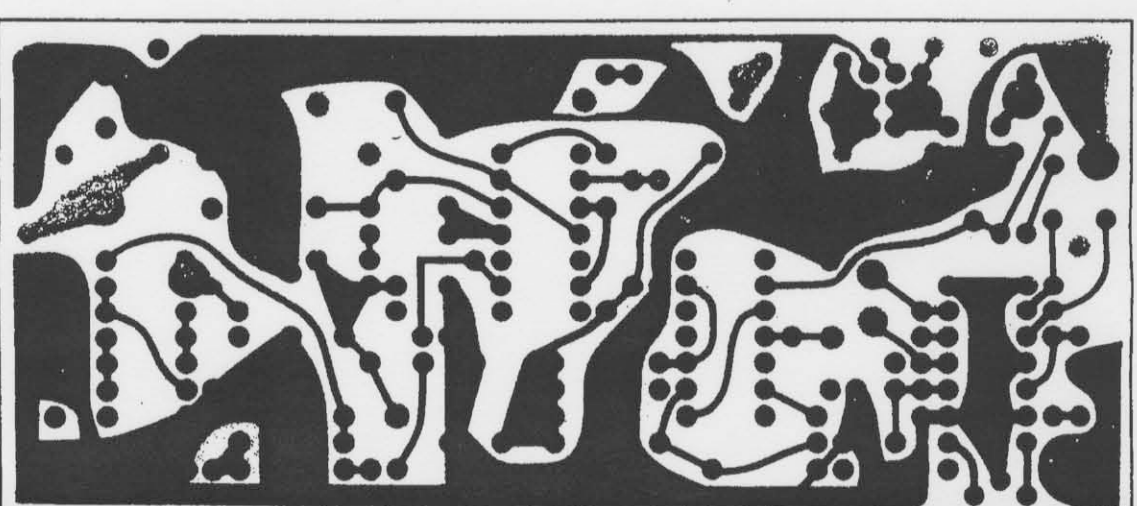
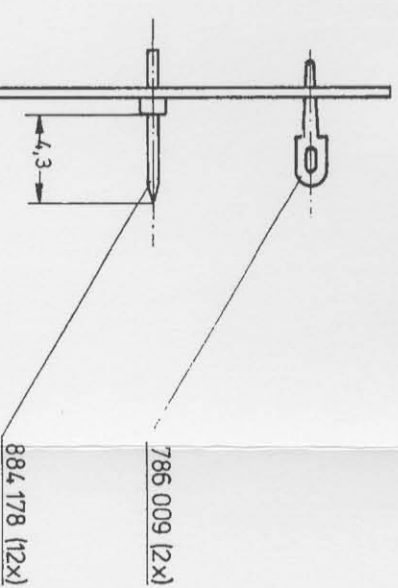
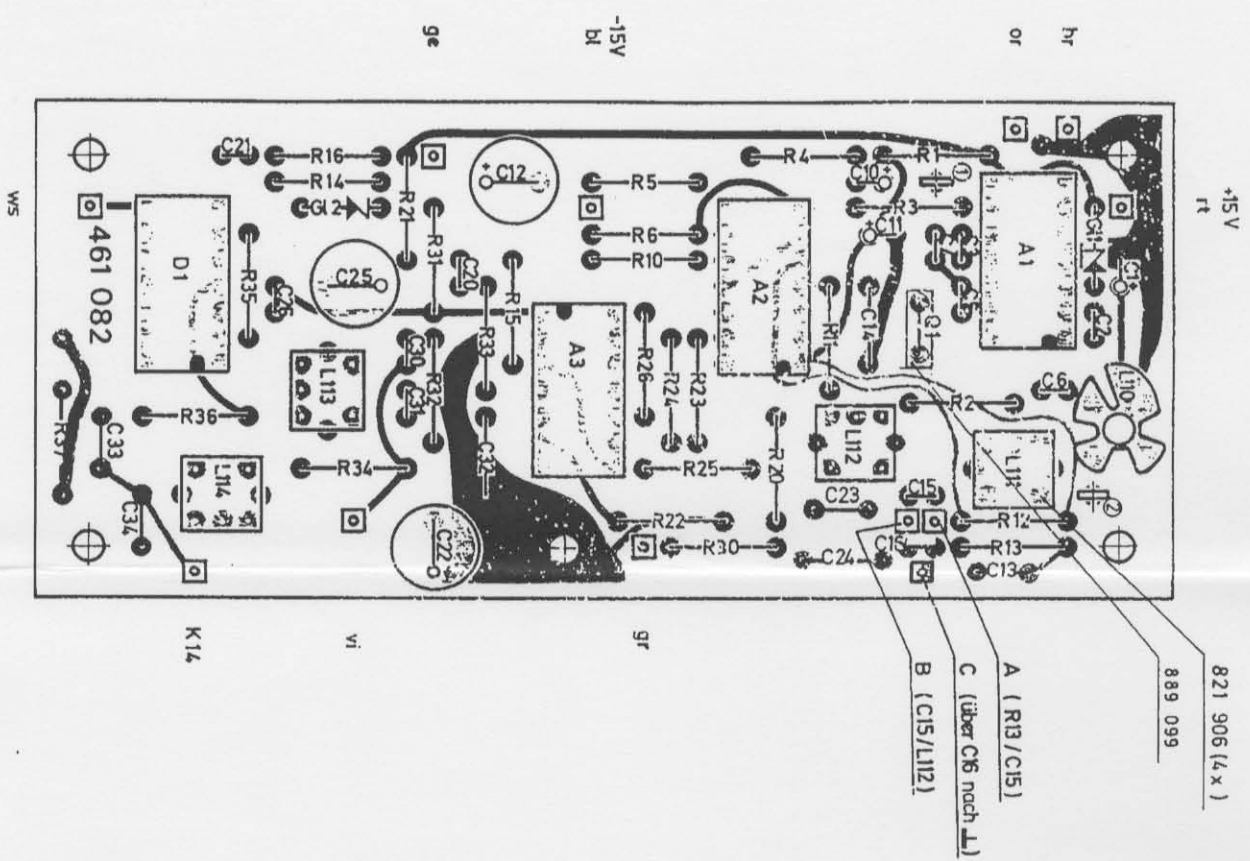


weich gelötet



☐ Kontrollmaß

366.65 0.075 St. 908.00.209.79 No. 908.17 27.679 Mo 909.44 22.379 Elia 909.62 5.379 No. 908.09 20.279 No. 909.73 47.679 Elia	0.2 2:1	Schlumberger o/s Bestückte Leiterplatte 361 082
--	------------	---