

**AUTOMATIC AND C.B. SYSTEMS**  
**SUBSCRIBERS PRIVACY EQUIPMENT ON D.E.L. & P.B.X. EXTENSION USING TELEPHONE No.740 AND PRIVACY SET No.8**

NOTES

1. APPARATUS REQUIRED

Telephone No. 740	Part 1/DSP/1244
Cord Inst. No. 6/61 AT...	Part 1/DST/26
Cord Inst. No. 9/21 AD...	Part 2/DST/836
Block Terminal No. 36B	Part 8/DBU/372 } RECALL
Privacy Set No. 8	Switch No. 5A-4)
2 Parts 1/DBU/372	Switch No. 19B-1
	C wire signalling

2. Fit auxiliary units as shown (see Dgms N840, N848 & N849).

BUTTON LAY-OUT ON TELE.	DUMMY	S	N	RECALL OR DUMMY
KEY LATCHES	KA	KB	KC	KD
LATCH SETTING	-	1	2	2
KEY No.	-	Part 1/DSP/1244	Part 1/DST/26	Switch No. 5A-4
BUTTON PART No.	-	1/DBU/372	1/DBU/372	8/DBU/372

Parts 1/DBU/372 to be engraved with the appropriate letter, size 11, Type A (see Drg. SD1 Sht 2).

Set Latch X & Y for gravity switch release.

3. Transfer the RED receiver wire from T1 to T23. Transfer the BLUE & WHITE Transmitter wires from T3 & T10 to T14 & T15 respectively.

4. The alternative terminal numbers shown in brackets refer to Privacy Sets 6 and 7 used on Existing Installations.
5. If the Privacy Set is remote from the telephone, connexion should be made by a 6 wire cable.
6. When extn. bell is required omit Strap T16-T17 & connect bell between BT9 & BT10.
7. OPERATOR RECALL
  - (a) For 2-wire PBX Extensions connect wiring shown -1-1-.
  - (b) For 4-Wire ('C' Wire) Extensions connect wiring shown -2-2-, Switch 5A-4 is for Recall, Switch No. 19B-1 is for signalling, use the GREY Conductor in Cord, if spare, to make connexion between BT11 & T24.

8. In cases where an Extn. bell is required in addition to 4-Wire ('C' Wire) working, use Cord, Inst. 12/15AD in place of Cord, Inst. 9/21AD. The connexion between BT11 & T24 should use the GREEN-WHITE Conductor.

9. PRIVACY SET No. 8 - CONVERSION TO 12v WORKING

GENERAL

- (a) Privacy Sets No. 8 are made by various manufacturers and the modifications to convert to 12 volt working differ in detail for each manufacturer's version of the Privacy Set No. 8.
- (b) Additional Stores Required, for all makes of Privacy Set No. 8.

Cord Instrument No. 12/15 AD... (Telephone)  
 " " No. 9/21 AD... (Privacy Set)  
 Switch No. 19B-1 (Additional Gravity Spring Set)

(c) Modification to Telephone No. 740 is the same for all manufacturers Privacy Sets. Fit Switch No. 19B-1 to the Telephone, terminating the BROWN and GREY conductors on Terminals T24 and T25 respectively. (If the Telephone is connected for 'C' Wire working, Switch No. 19D-1 will be required in place of Switch No. 19B-1

PD TELECOMMS HQ. PAPER:- R DISTN:- NIL	ISSUE		
		[Signature]	T07.2.3      12-3-75

An additional Terminal Strip, Part 2/DST/836 will also be required). Fit Cord Inst. 12/15AD, Connect additional GRN-BLU and GRN-OR Conductors to T24-BT11 and T25-BT12 respectively.

(d) Modifications to Privacy Sets (PYE/TMC Manufacture) Marked:-

Privacy Set No. 8  
TES 66 (Number will change with year of manufacture)

Remove Cover of Privacy set. On Terminal Strip marked TS1 (see fig. 1 page 3). Remove Straps between Terminals 11-16 and 9-10, extend the connexions of the additional gravity switch in the Telephone (T24 and T25) to Terminals 9 and 10 in the Privacy Set via the Block Terminal and spare cable conductors. If a 6 way cord is used to connect the privacy set to the Block Terminal, change this for a Cord Inst. No. 9/21 AD.

On Terminal Strip TS2 (see fig. 1) remove wired strap from between Tags 2 and 4. Connect Resistor No. 91EJ 1000 ohms between Tags 2-12.

Connect battery, Positive to TS1 Terminal 13  
Negative to TS1 Terminal 14

Check that Telephone Transmitter current is between 7-15 mA. For this check the Telephone handset should be lying on its side, the transmitter inset should be changed if the current is outside these limits.

(e) Modifications to Privacy Sets (EMI Manufacture) marked:-

Privacy Set No. 8  
GCL 67

Remove Cover of Privacy Set. On Terminal Strip marked TS1 (see Fig. 2, page 3) Remove strap between Terminals 9-10. Extend the connexions of the additional gravity switch in the Telephone (T24 and T25), to terminals 9-and 10 in the Privacy Set via the Block Terminal and spare cable conductors. If a 6 way cord is used to connect the privacy set to the Block Terminal change this for a Cord Inst. No. 9/21AD.

On printed circuit board (see fig. 2). Remove wired Strap Tags 17-18, transfer straps from Tags 11-12 to

Tags 11-13 and from Tags 14-15 to 14-16 (Tags are numbered on the inside of the circuit board)

Connect Battery, Positive to TS1 Terminal 13  
Negative to TS1 Terminal 14

(f) Modifications to Privacy Sets (AGI Manufacture) marked:-

Privacy Set No. 8  
RAA 72

Remove cover of Privacy Set. On Terminal Strip marked TB1 (see fig. 3 front view, page 3) Remove strap between Terminals 9-10, extend the connexions of the additional gravity switch in the Telephone (T24-T25) to Terminals 9 and 10 in the privacy set, via the Block Terminal and spare cable conductors. If a 6 way cord is used to connect the privacy set to the Block Terminal change this for a Cord Inst. No. 9/21AD.

On the smaller of the two Printed Circuit Boards (see fig. 3 page 3 back view) transfer strap from Tags 2-4 to Tags 2-12.

Connect Battery, Positive to TB2 Terminal 13  
Negative to TB2 Terminal 14

10. This diagram was previously Diagram SA(L)5164.

11. For general information on Privacy Sets see TI's C3 M1070 and 1071.

FIG. 1. PRIVACY SETS MARKED TES 66 ETC

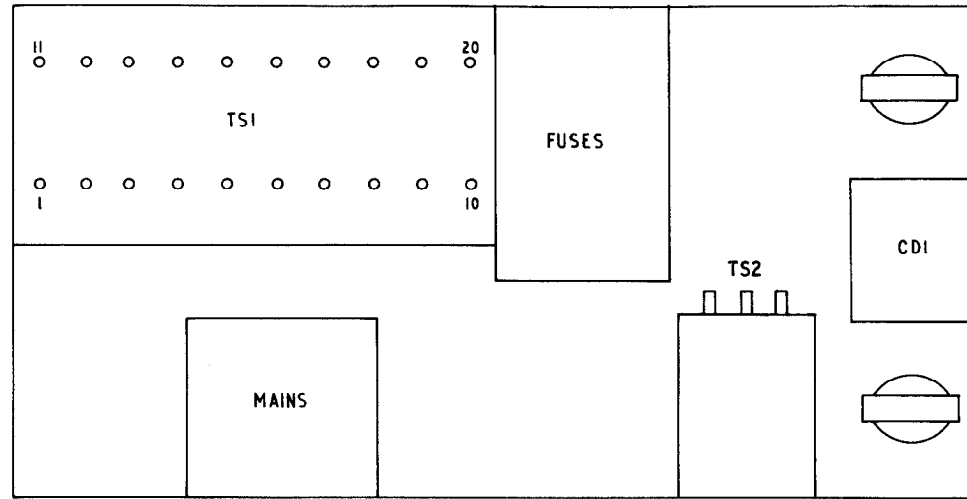


FIG. 2. PRIVACY SETS MARKED GCL 67 ETC

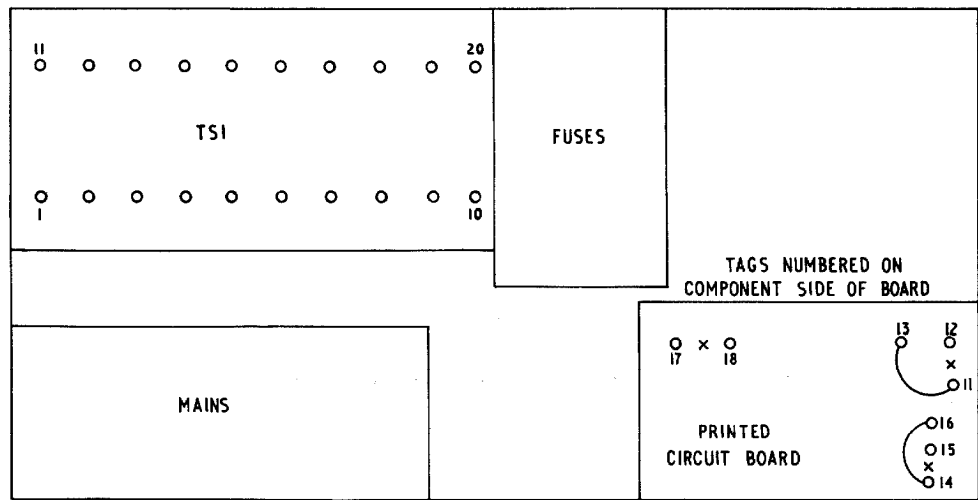
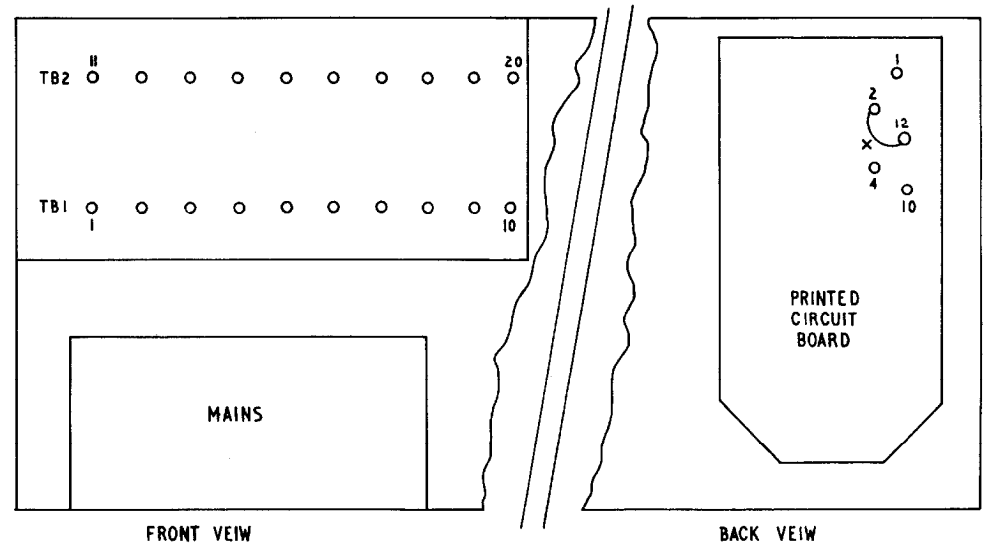
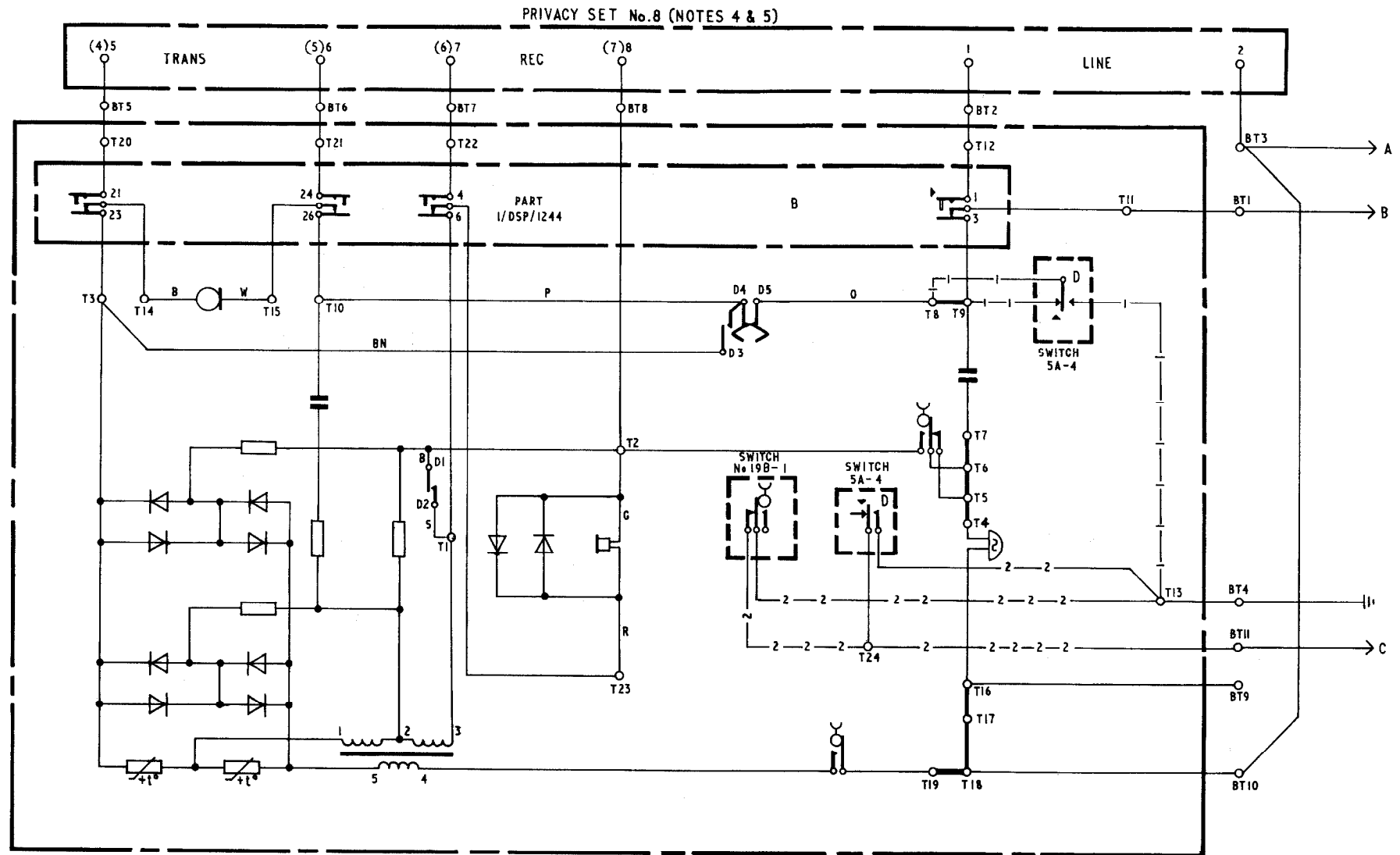


FIG. 3. PRIVACY SETS MARKED RAA 73 ETC



EXPLANATORY



SCRAMBLE (KB)
4
NORMAL (KC)
0
RECALL (KD)
1

TELEPHONE No. 740 (NOTES 2 & 3)

