

# Video Amplifier

$R_1, R_3, R_5, R_7$  - Bias Resistors: values vary to obtain 300 microampere collector current.

$R_1 = 270 \text{ k}\Omega$  TO  $820 \text{ k}\Omega$   $\frac{1}{2}$  w. alben brodley

$R_3 = 680 \text{ k}\Omega$  TO  $1.2 \text{ M}\Omega$   $\frac{1}{2}$  w. "

$R_5 = 1.2 \text{ M}\Omega$  TO  $1.5 \text{ M}\Omega$   $\frac{1}{2}$  w. "

$R_7 = 470 \text{ k}\Omega$  TO  $560 \text{ k}\Omega$   $\frac{1}{2}$  w. "

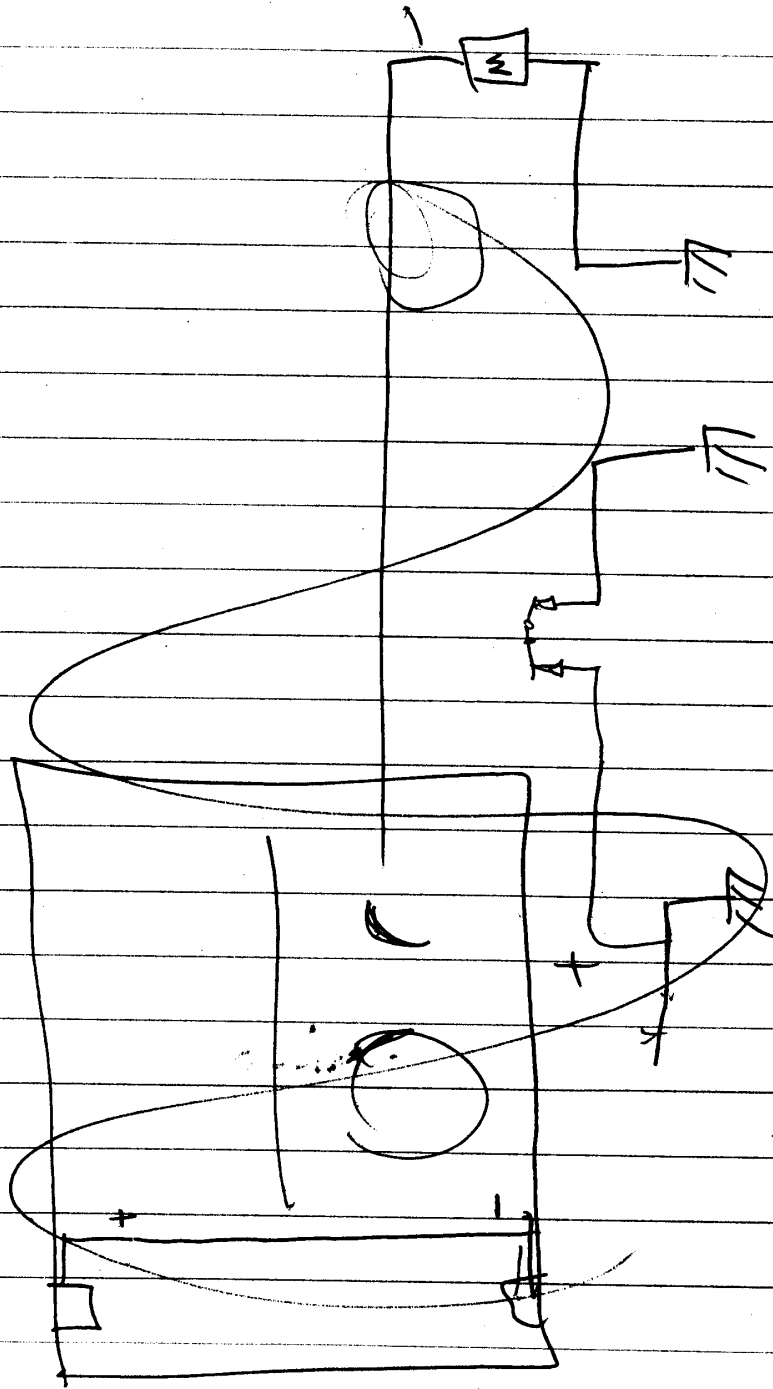
$R_2, R_4, R_6, R_8 = 2200 \Omega$   $\frac{1}{2}$  w. "

$TR_1, TR_2, TR_3, TR_4$  SB100 - Philco

~~SQ~~ = IPC # 46025 COAXIAL (MALE)

~~P~~ - CONTINENTAL 4-20 P WITH HOOD

This document is not to be disseminated  
file. If separated from the file it must be  
subjected to individual systems review.



# Video amplifier

$C_1, C_2, C_3, C_4, C_5 = 0.1 \mu\text{fd. } 25\text{v. MURON}$   
CERAMIC

$C_6 = 120 \mu\text{fd.}$

$D_1 = 1N67 \text{ HUGHES}$

## AUDIO AMPLIFIER

$R_9 - 1M\Omega$  to w. ALLEN BRADLEY

$R_{10}, R_{14} - 22K\Omega$  " "

$R_{11}, R_{15} - 150K\Omega$  " "

$R_{12}, R_{16} - 18K\Omega$  " "

$R_{13}, R_{17} - 3.9K\Omega$  " "

$R_{18} - 12K\Omega$  " "

$R_{19} - 220K\Omega$  " "

$R_{20} - 2.7K\Omega$  " "

$R_{21} - 8.2K\Omega$  " "

$S_1 =$  CONTINENTAL SOCKET 4-20 S

$P_2 =$  CONTINENTAL PLUG C5-20 P WITH HOOD

$TR_5, TR_6, TR_7 =$  2N34 SYLVANIA

This document is part of an integrated file. If separated from the file it must be subjected to individual systematic review.

# AUDIO AMPLIFIER

C<sub>7</sub> - 70  $\mu$ f 15V. FANSTEEL TANTALUM

C<sub>8</sub>, C<sub>10</sub>, C<sub>12</sub> - 10  $\mu$ f 100V. FANSTEEL TANTALUM

C<sub>9</sub>, C<sub>11</sub> - 0.1  $\mu$ f 25V MUCON CERAMIC

T<sub>1</sub> - ARGONNE - AR-109 - CENTER TAP REMOVED

## DEMAND

R<sub>22</sub> - 100K $\Omega$  POT.

R<sub>23</sub>, R<sub>28</sub>, R<sub>29</sub> - 100K $\Omega$  1/2 W. ALLEN BRADLEY

R<sub>24</sub> - 6.8K $\Omega$  " "

R<sub>25</sub> - 18K $\Omega$  " "

R<sub>26</sub> - 22K $\Omega$  " "

R<sub>27</sub> - 100 $\Omega$  " "

R<sub>30</sub> - 200 $\Omega$  1 WATT

C<sub>13</sub>, C<sub>17</sub>, C<sub>18</sub>, C<sub>19</sub> - 0.1 $\mu$ fd 25V. MUCON CERAMIC

C<sub>14</sub>, C<sub>15</sub>, C<sub>16</sub> - 200 $\mu$ fd 15V. TANALUM - CORNELL DUBILIER

C<sub>20</sub>, C<sub>21</sub> - 2 $\mu$ fd - 100V. FANSTEEL TANTALUM

TR<sub>8</sub>, TR<sub>7</sub> - 2N34

RY<sub>1</sub>, RY<sub>2</sub> - ELGIN-NEOMATIC RELAY - NM2K

S<sub>02</sub> - CONTINENTAL - C5-20 S

F<sub>3</sub> - " 4-20 S - WITH HOOD

S<sub>03</sub> - CONTINENTAL 4-20 P

M<sub>1</sub> - CAM DRIVE MOTOR 1/2 R.P.M. 6 Volts 70mA.

HAYDON #FW296 Z CALIBRATED RESISTOR REMOVED

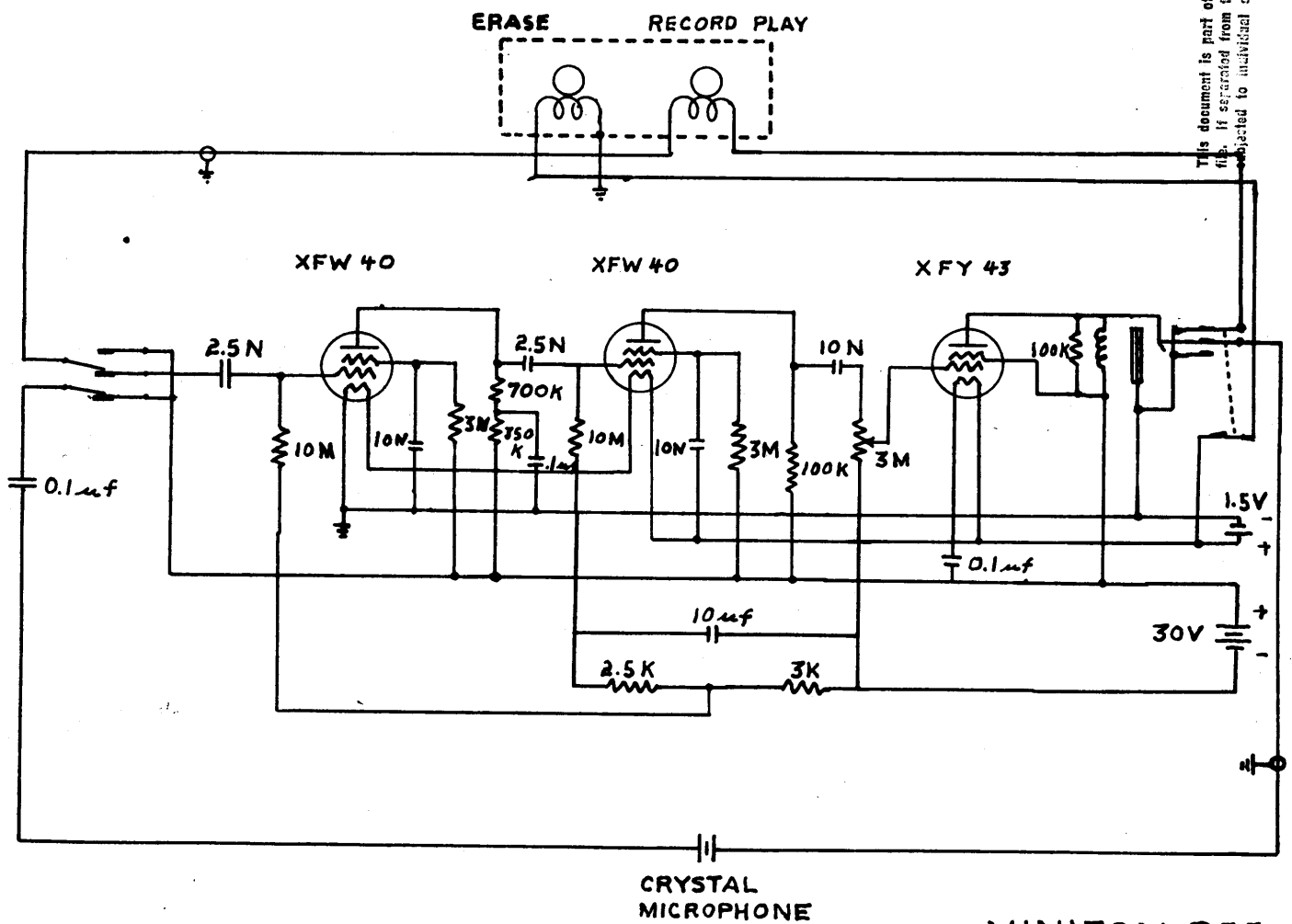
L<sub>1</sub>, L<sub>2</sub> - 100MH. 25 $\Omega$  CUP CORE CHOKES

D<sub>2</sub> - 1N48

SW<sub>1</sub> - MICRO-SWITCH - CAM-TIME ACTUATED (ARM LEVER)

SW<sub>2</sub> - MICRO-SWITCH (BAT LEVER) POWER SWITCH

This document is part of an integrated file. If separated from the file it must be subjected to individual systematic review.



MINIFON P55

